

Swedish Opinions on Different Energy Sources

Per Hedberg
Sören Holmberg
September 2019



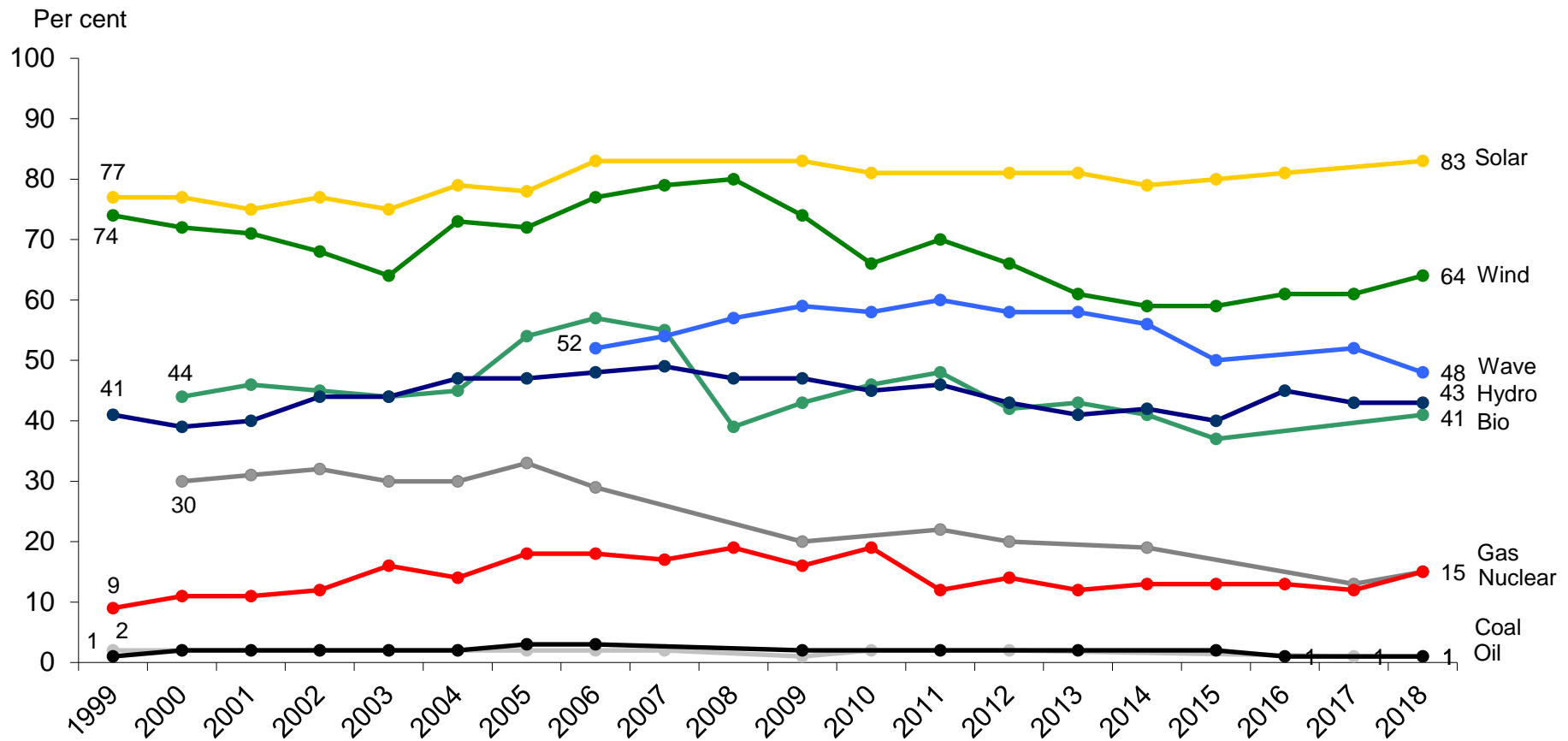
SOM-INSTITUTET
SAMHÄLLE OPINION MEDIER



GÖTEBORGS UNIVERSITET

The Research Project Energy Opinion in Sweden
Financed by Swedish Energy Agency

Percent Swedes Who Think Sweden - More than Today - Should Go For Different Energy Sources

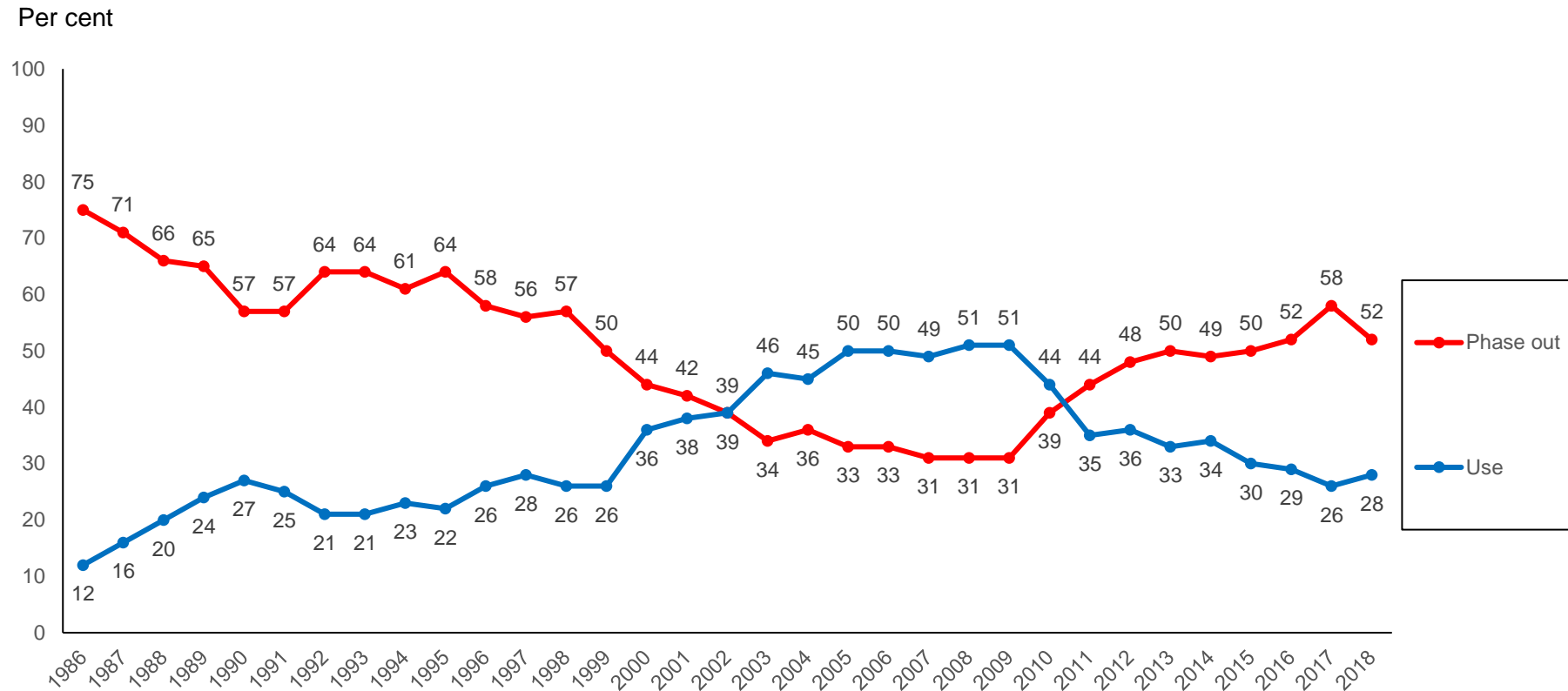


Data: The SOM Institute, University of Gothenburg; Annual nationwide surveys in Sweden.

Comment: See question H in Appendix. Percentages are calculated among respondents who answered the question for the different energy sources. The results for biofuel and gas in 1999 were 29 and 21 percent, respectively. Due to a suspected context effect in the questionnaire, the results are not presented in the figure.

Principal investigator: Sören Holmberg, phone +4631 7861227, e-mail: soren.holmberg@pol.gu.se. Data processed by Per Hedberg.

Swedes on the Use of Nuclear Power as an Energy Source

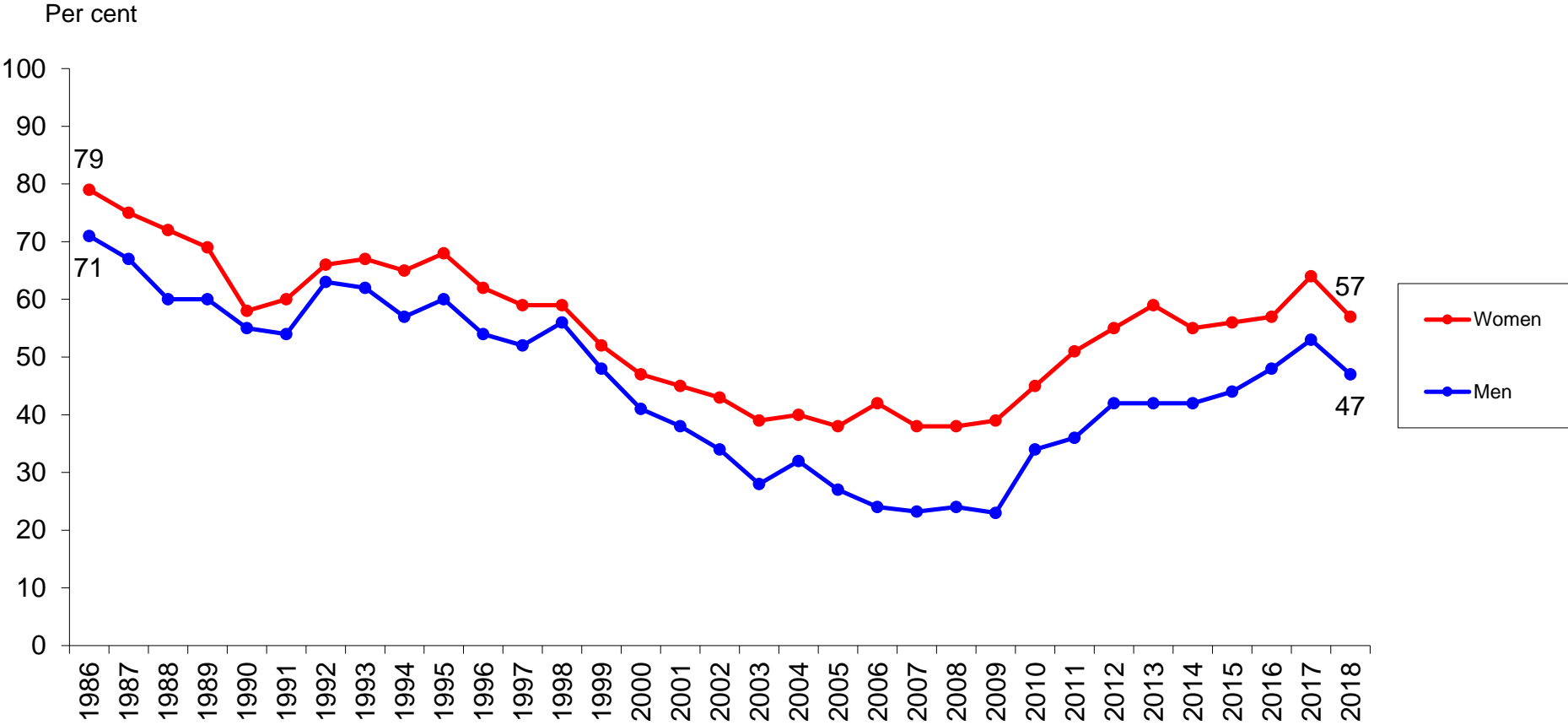


Data: The SOM Institute, University of Gothenburg; Annual nationwide surveys in Sweden; Sample size 3 000 persons 16–85 years old; Mail questionnaires with an average response rate of 60 percent. The survey question asks about Swedes’ opinion on the use/long term use of nuclear power as an energy source in Sweden. Response alternatives, including a “no opinion” alternative, are phrased as fairly concrete policy proposals and have varied some over the years (see Appendix). The number of substantial response alternatives was five up until 1996/97, but there after reduced to four. The words “use nuclear power” and “phase out nuclear power” has all the time been used in the response phrasings, making it possible to distinguish between people in favour of using nuclear power versus people in favour of phasing out nuclear power. Changes in question wording occurred between the years 1986-1987 (to question A), 1997-1998 (from question A to B), 1999-2000 (from question B to C), 2004-2005 (from question C to D) and 2009-2010 (from question D to E). See the Appendix for further details. In the figure, the old five substantial response alternative- question is used up until 1997 and after that the new four substantial response alternative- question starting in 1998. In 1986, the “don’t know” response was left out; therefore the results for this year have been adjusted. The actual results were 84 percent “abolish”, 13 percent “use” and 3 percent no answer.

Comment: All respondents are included in the percent calculations.

Principal investigator: Sören Holmberg, phone +4631 7861227, e-mail: soren.holmberg@pol.gu.se. Data processed by Per Hedberg.

Percent in Favour of Phasing Out Nuclear Power among Swedish Women and Men

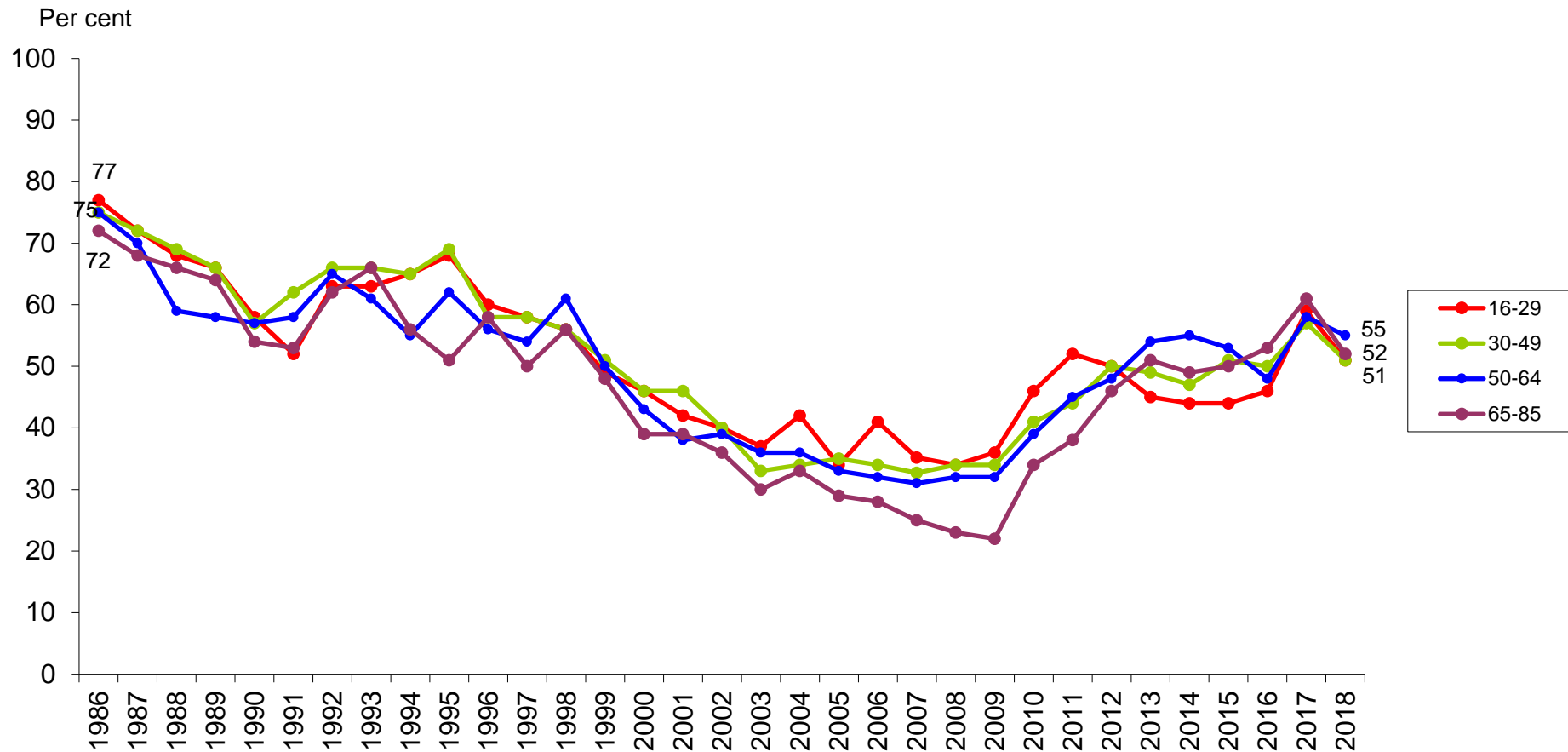


Data: The SOM Institute, University of Gothenburg; Annual nationwide surveys in Sweden.

Comment: All respondents are included in the percent calculations.

Principal investigator: Sören Holmberg, phone +4631 7861227, e-mail: soren.holmberg@pol.gu.se. Data processed by Per Hedberg.

Percent in Favour of Phasing Out Nuclear Power among Swedes in Different Age Groups

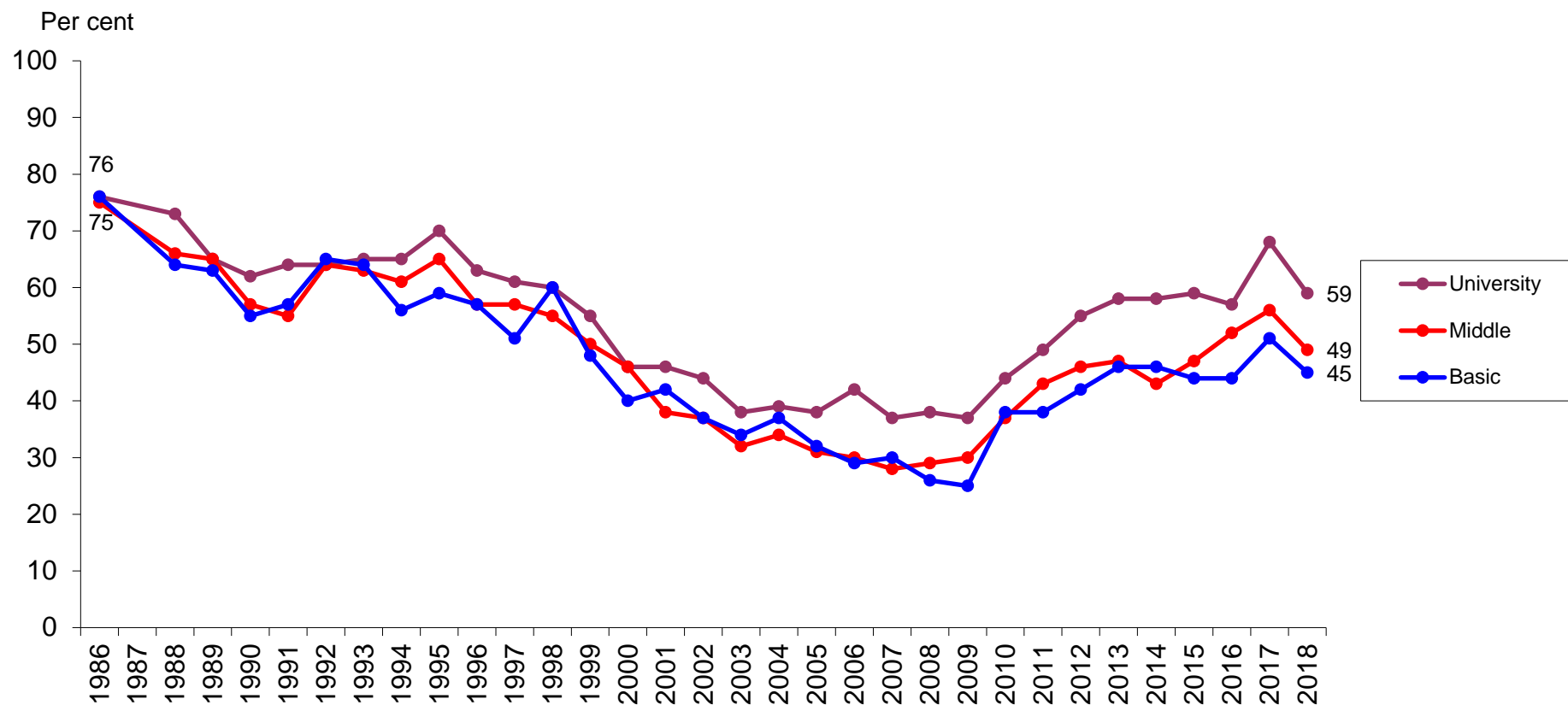


Data: The SOM Institute, University of Gothenburg; Annual nationwide surveys in Sweden.

Comment: All respondents are included in the percent calculations.

Principal investigator: Sören Holmberg, phone +4631 7861227, e-mail: soren.holmberg@pol.gu.se. Data processed by Per Hedberg.

Percent in Favour of Phasing Nuclear Power among Swedes in Different Educational Groups

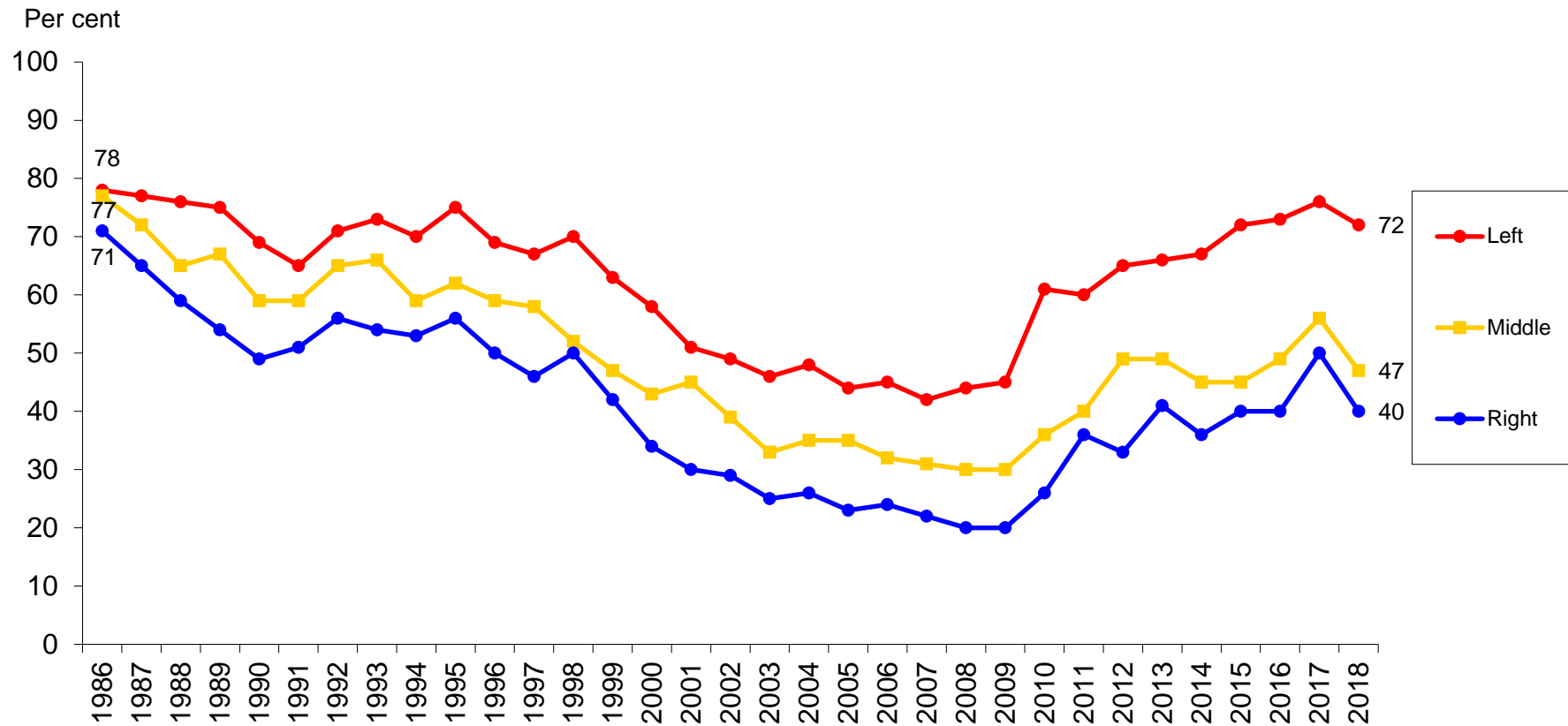


Data: The SOM Institute, University of Gothenburg; Annual nationwide surveys in Sweden.

Comment: All respondents are included in the percent calculations.

Principal investigator: Sören Holmberg, phone +4631 7861227, e-mail: soren.holmberg@pol.gu.se. Data processed by Per Hedberg.

Percent in Favour of Phasing Out Nuclear Power among Swedes with Different Ideological Self-Placements

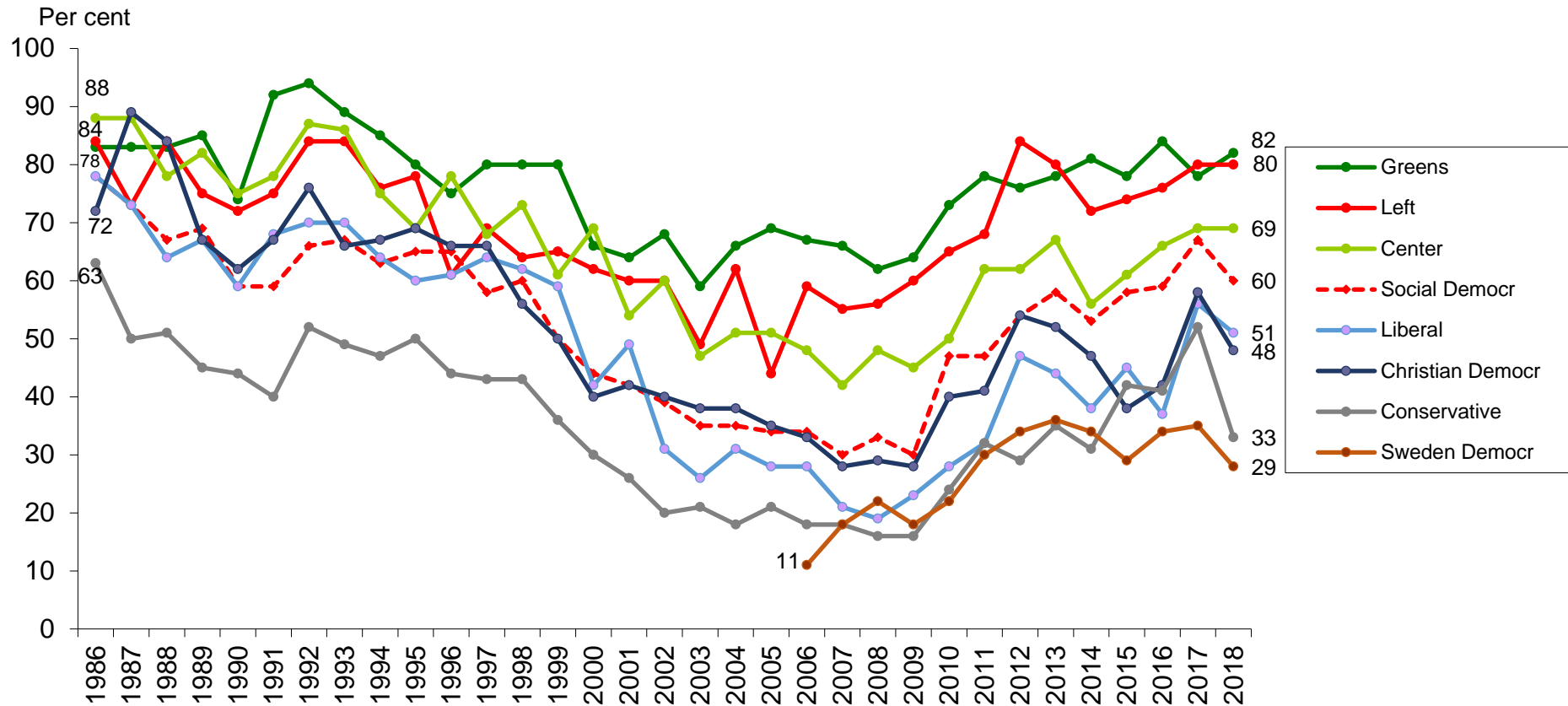


Data: The SOM Institute, University of Gothenburg; Annual nationwide surveys in Sweden.

Comment: All respondents are included in the percent calculations.

Principal investigator: Sören Holmberg, phone +4631 7861227, e-mail: soren.holmberg@pol.gu.se. Data processed by Per Hedberg.

Percent in Favour of Phasing Out Nuclear Power among Swedes with Different Party Sympathies

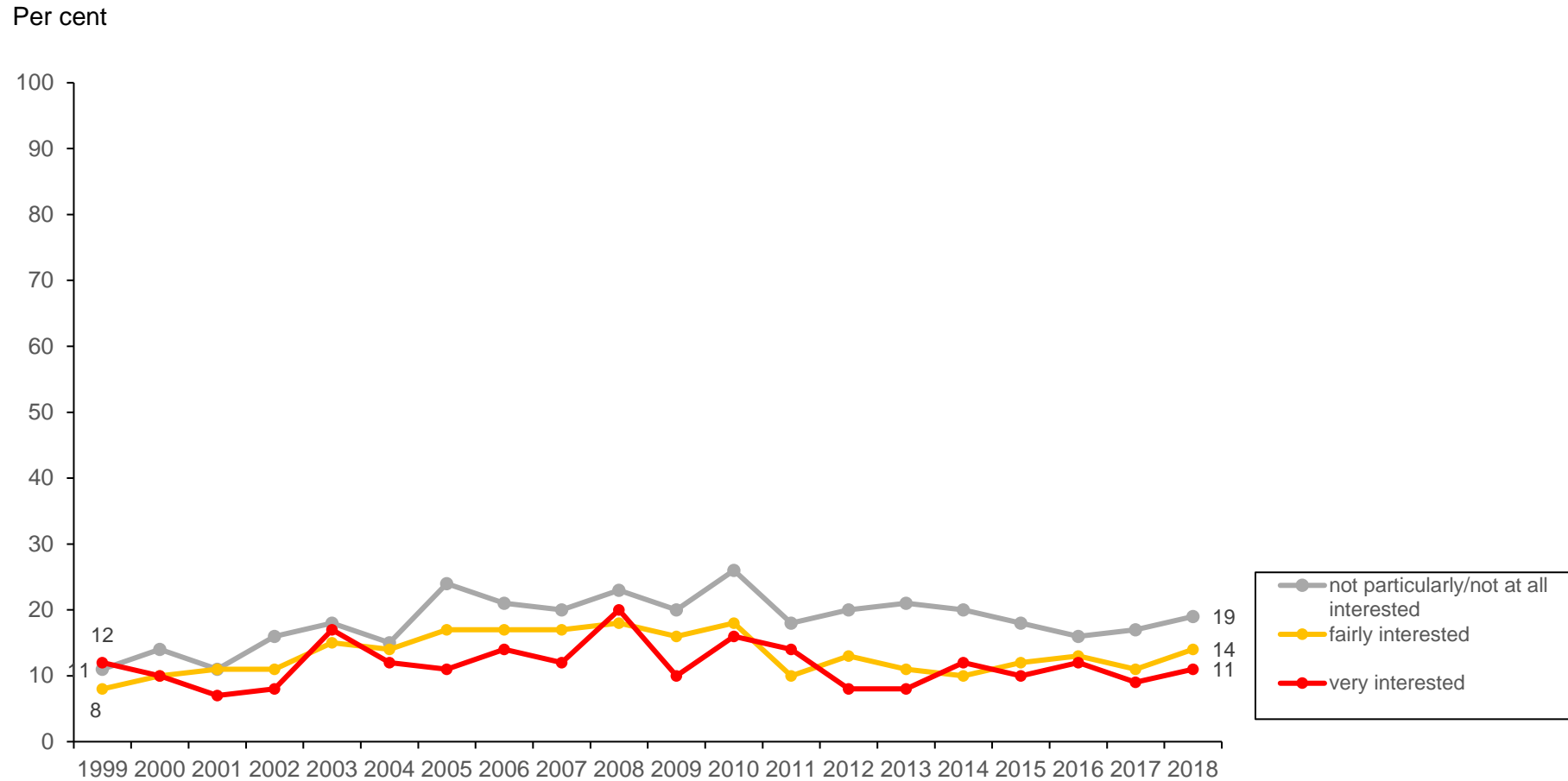


Data: The SOM Institute, University of Gothenburg; Annual nationwide surveys in Sweden.

Comment: All respondents are included in the percent calculations. The results for Feminist Initiative are 82 percent in 2014, 77 percent in 2015, 82 percent in 2016, 85 percent 2017 and 78 percent 2018.

Principal investigator: Sören Holmberg, phone +4631 7861227, e-mail: soren.holmberg@pol.gu.se. Data processed by Per Hedberg.

Percent in Favour of Go For More Nuclear Power than Today Among Swedes With Different Interest in Environmental Issues

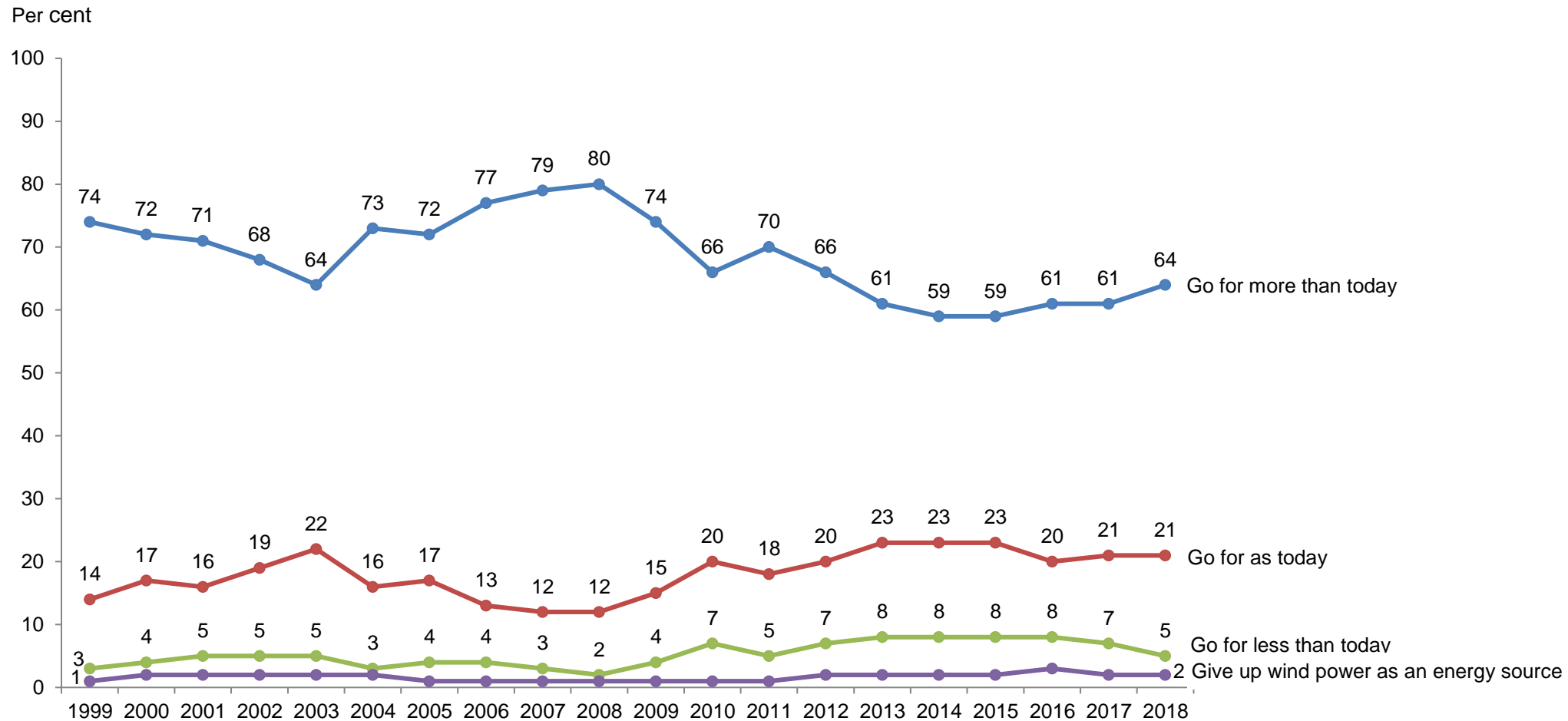


Data: The SOM Institute, University of Gothenburg; Annual nationwide surveys in Sweden.

Comment: No answers are not included in the percent calculations.

Principal investigator: Per Hedberg, e-mail: per.hedberg@pol.gu.se

Percent in Favour of Go for More or Less Wind Power than Today among all Swedes



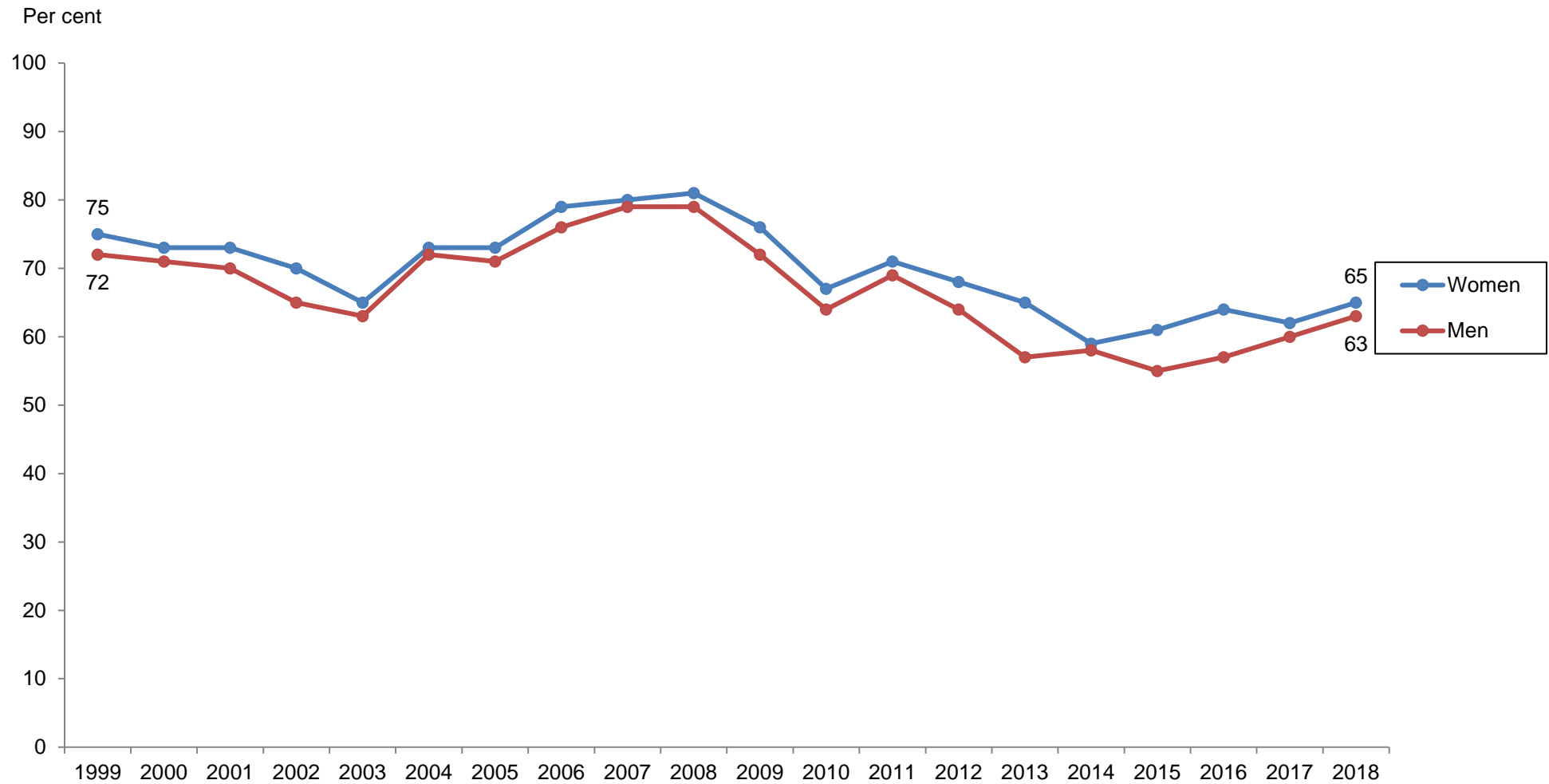
Data: The SOM Institute, University of Gothenburg; Annual nationwide surveys in Sweden; Sample size 3 400 persons 16–85 years old; Mail questionnaires with an average response rate of 60 percent. The response alternatives also include a “no opinion” alternative, which have varied from 5-8 percent over the years (2018, 8 percent).

Question: “During the upcoming 5-10 years, how much should we go for wind power?” Five response alternatives: “go for more than today”, “go for as today”, “go for less than today”, “give up wind power as an energy source” and “no opinion”.

Comment: No answers are not included in the percent calculations.

Principal investigator: Per Hedberg, e-mail: per.hedberg@pol.gu.se.

Percent in Favour of Go For More Wind Power than Today Among Swedish Women and Men

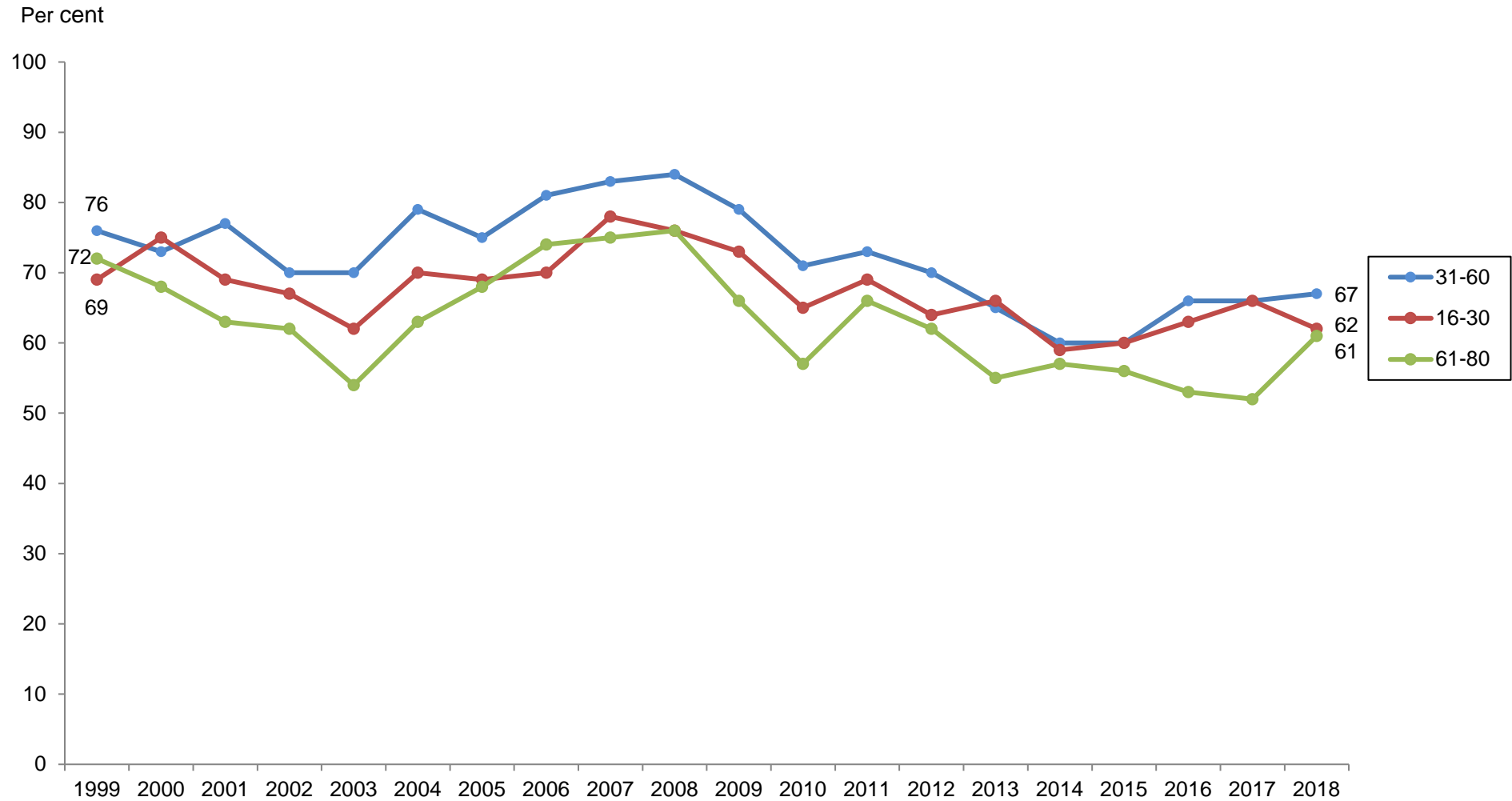


Data: The SOM Institute, University of Gothenburg; Annual nationwide surveys in Sweden.

Comment: No answers are not included in the percent calculations.

Principal investigator: Per Hedberg, e-mail: per.hedberg@pol.gu.se.

Percent in Favour of Go For More Wind Power than Today Among Swedes in Different Age Groups

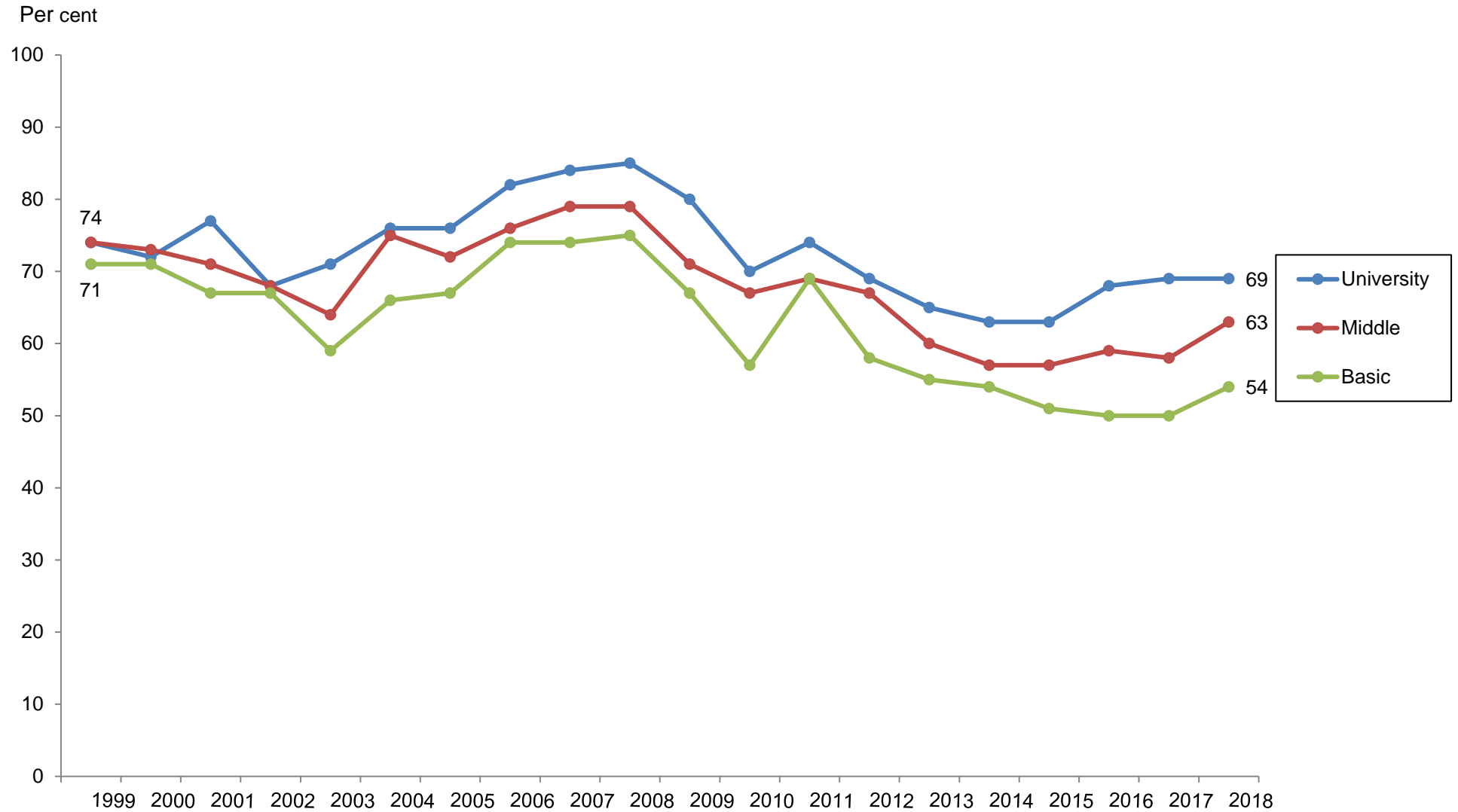


Data: The SOM Institute, University of Gothenburg; Annual nationwide surveys in Sweden.

Comment: No answers are not included in the percent calculations.

Principal investigator: Per Hedberg, e-mail: per.hedberg@pol.gu.se.

Percent in Favour of Go For More Wind Power than Today Among Swedes in Different Educational Groups

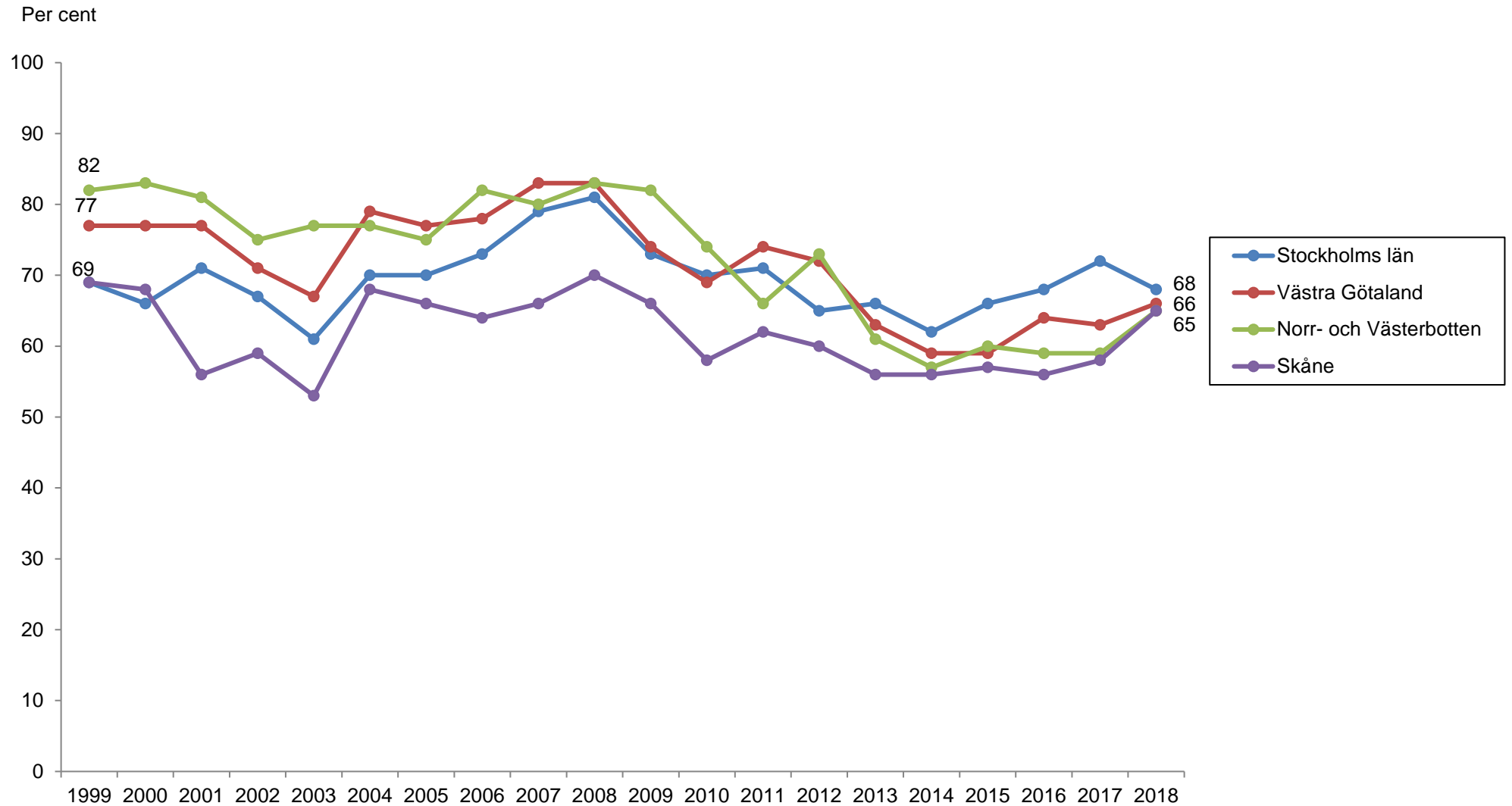


Data: The SOM Institute, University of Gothenburg; Annual nationwide surveys in Sweden.

Comment: No answers are not included in the percent calculations.

Principal investigator: Per Hedberg, e-mail: per.hedberg@pol.gu.se.

Percent in Favour of Go For More Wind Power than Today Among Swedes in Different Regional Parts of Sweden

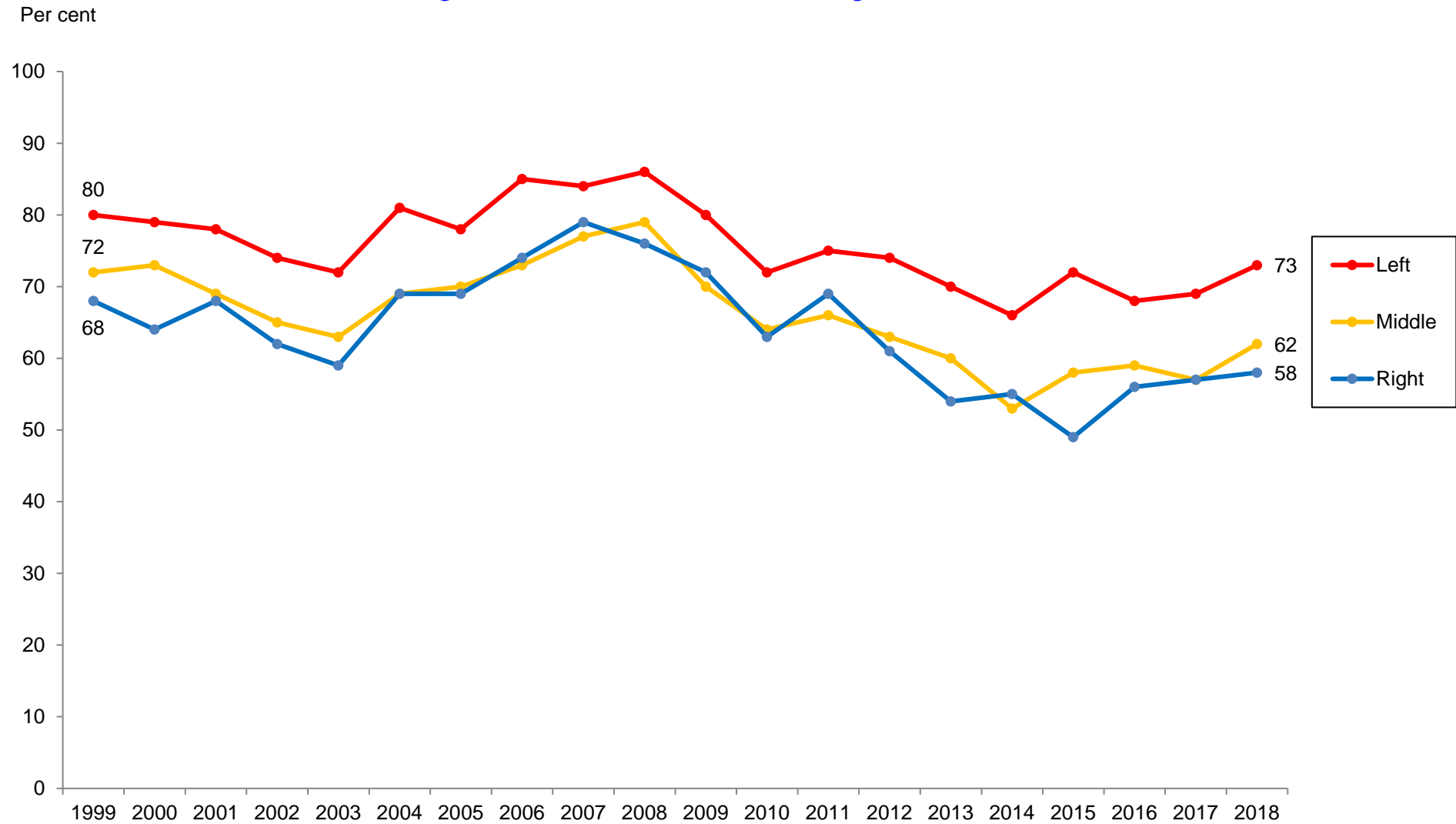


Data: The SOM Institute, University of Gothenburg; Annual nationwide surveys in Sweden.

Comment: No answers are not included in the percent calculations.

Principal investigator: Per Hedberg, e-mail: per.hedberg@pol.gu.se.

Percent in Favour of Go For More Wind Power than Today Among Swedes with Different Ideological Self-Placements

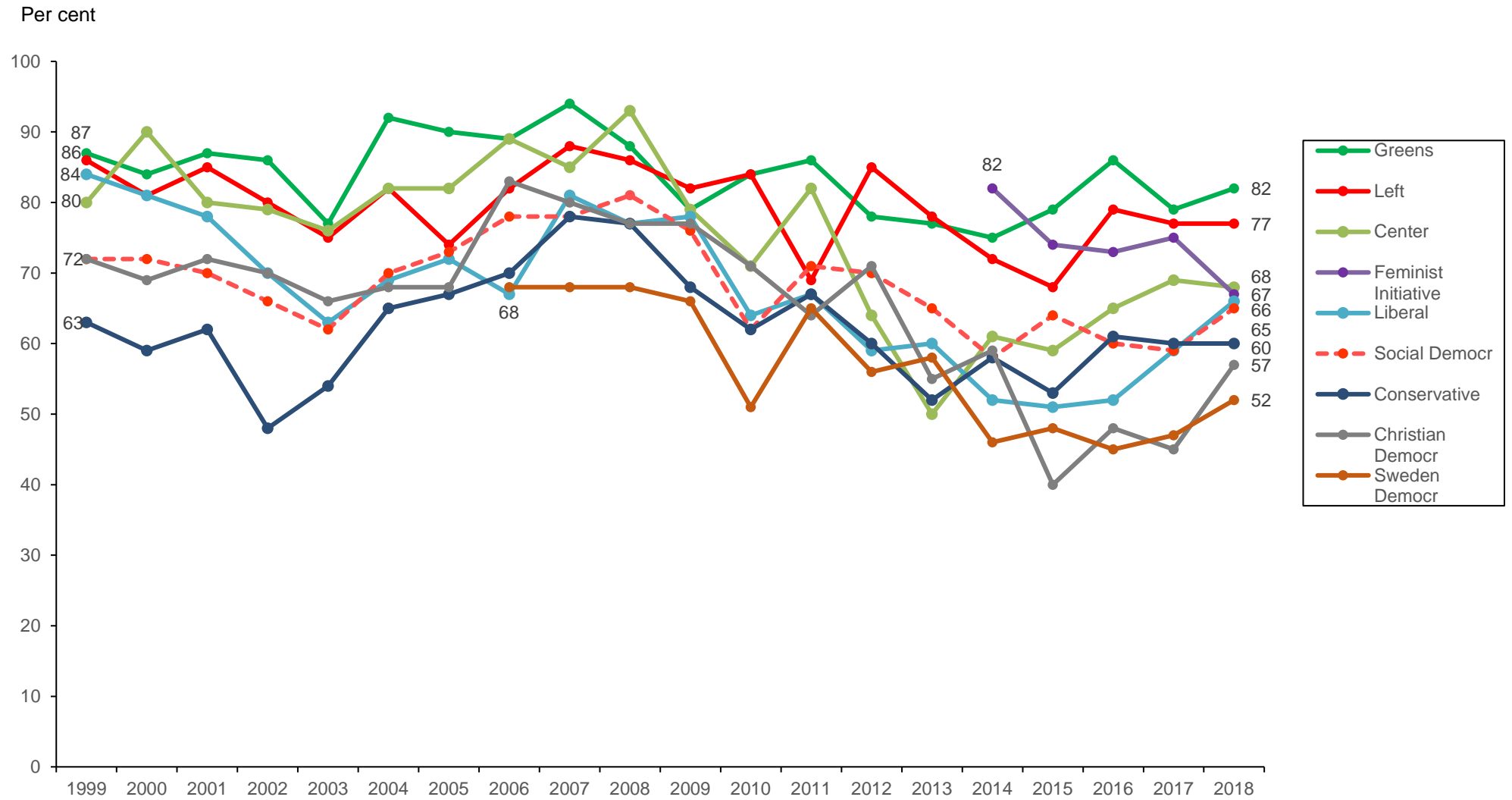


Data: The SOM Institute, University of Gothenburg; Annual nationwide surveys in Sweden.

Comment: No answers are not included in the percent calculations.

Principal investigator: Per Hedberg, e-mail: per.hedberg@pol.gu.se.

Percent in Favour of Go For More Wind Power than Today Among Swedes with Different Party Sympathies



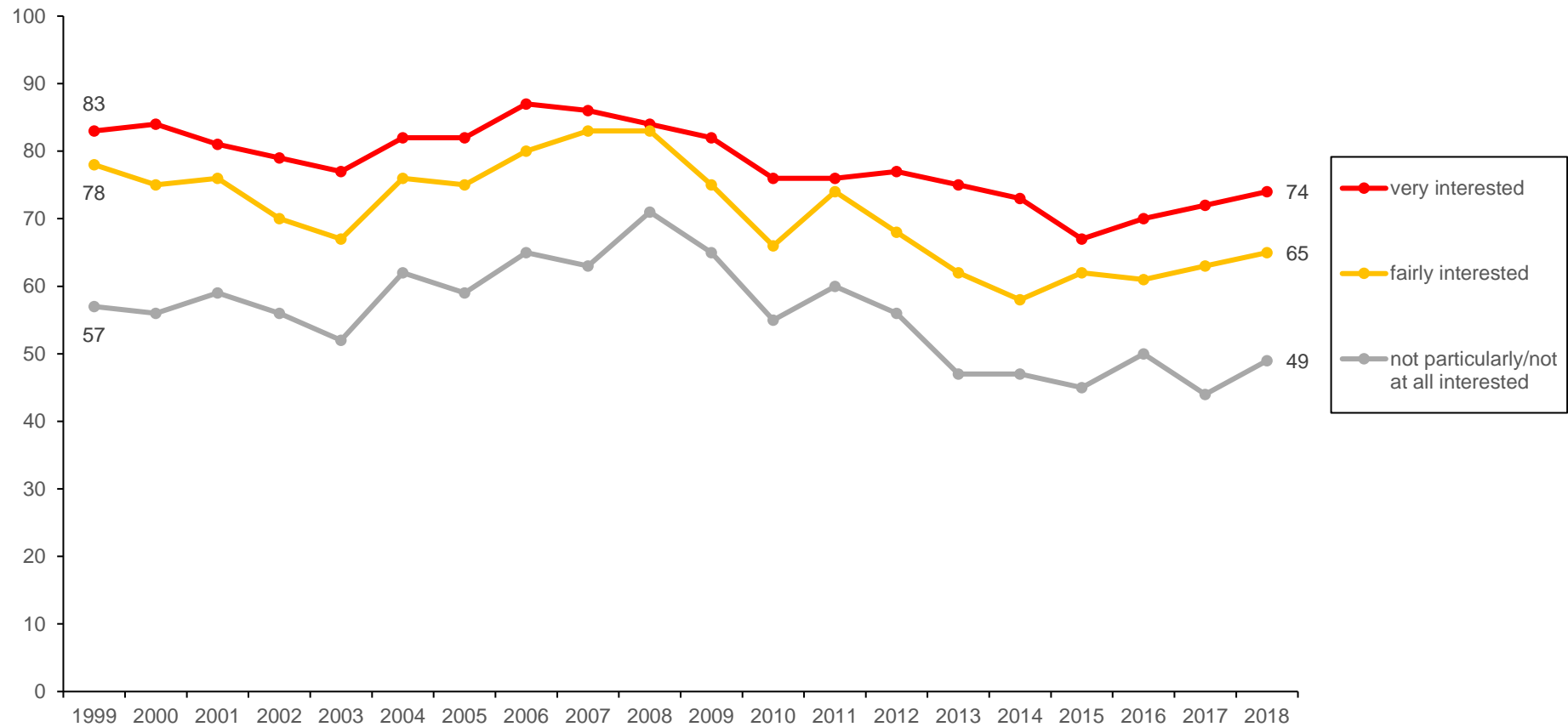
Data: The SOM Institute, University of Gothenburg; Annual nationwide surveys in Sweden.

Comment: No answers are not included in the percent calculations.

Principal investigator: Per Hedberg, e-mail: per.hedberg@pol.gu.se.

Percent in Favour of Go For More Wind Power than Today Among Swedes With Different Interest in Environmental Issues

Per cent



Data: The SOM Institute, University of Gothenburg; Annual nationwide surveys in Sweden.

Comment: No answers are not included in the percent calculations.

Principal investigator: Per Hedberg, e-mail: per.hedberg@pol.gu.se

Swedish Opinion on Using Oil as an Energy Source

