

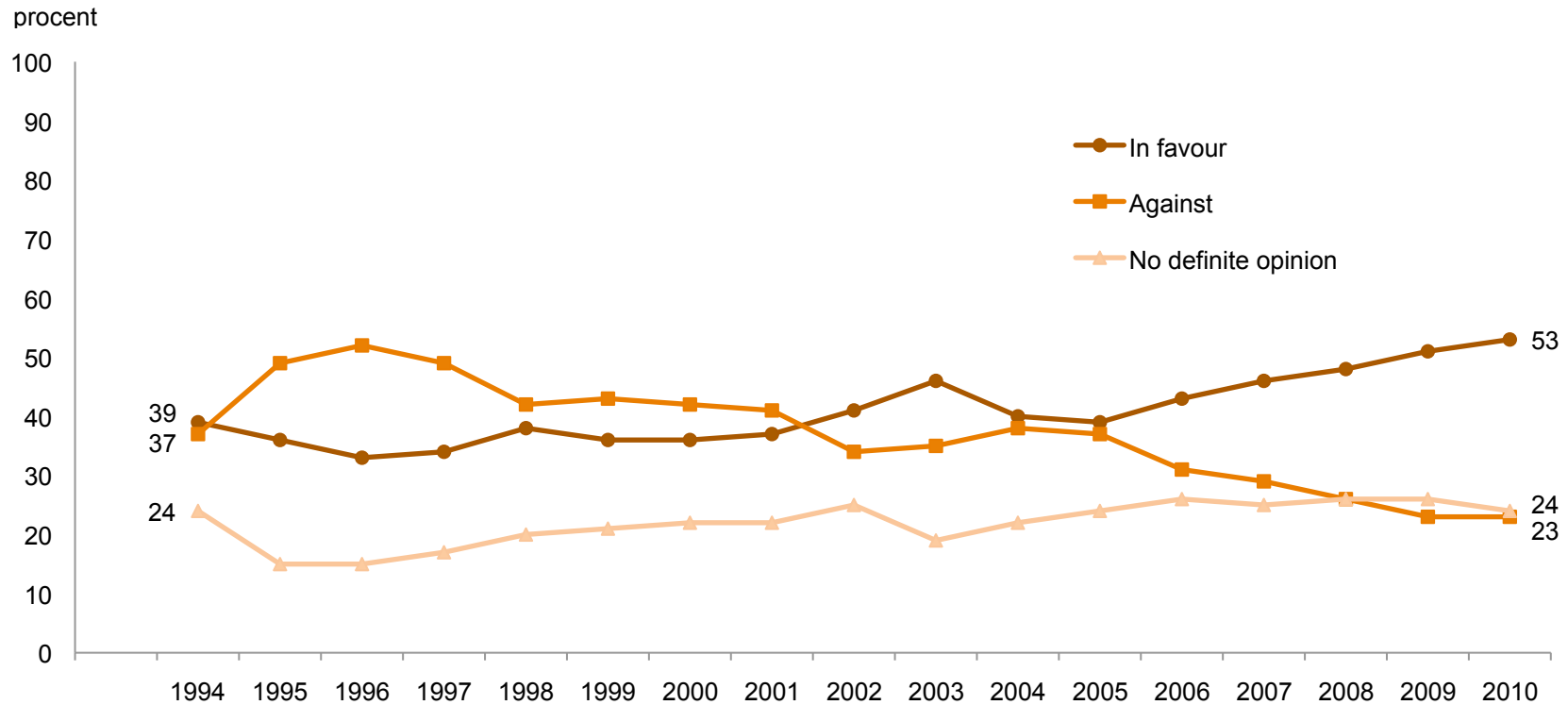


Swedish Opinion on the Swedish Membership in the European Union

Sören Holmberg [SOM-report no. 2011:5]



Opinion on the Swedish Membership in the European Union, 1994–2010



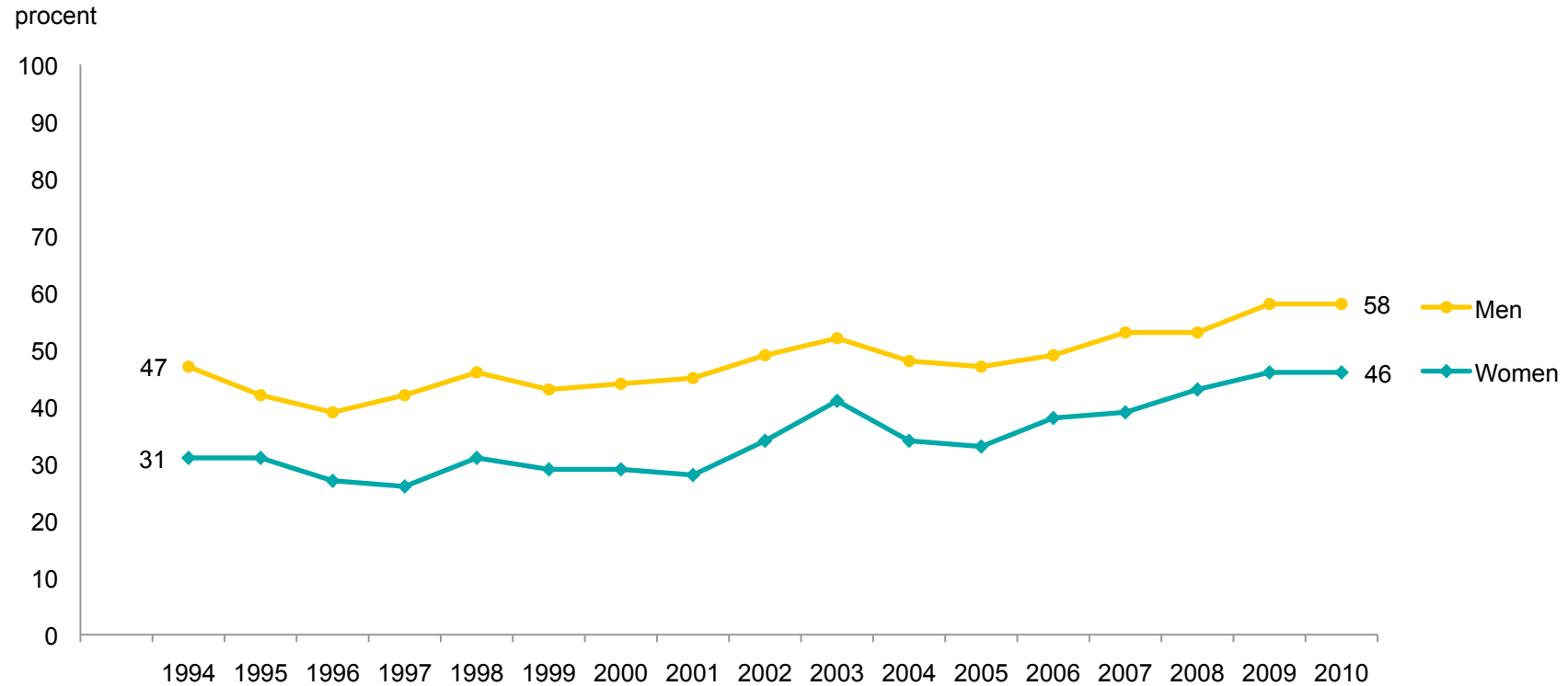
Data: SOM Institute, University of Gothenburg; Annual nationwide surveys in Sweden; Sample size: 9 000; age: 16–85 years old; Mail questionnaires with an average response rate of 65 percent. **Question:** "What is your opinion of the Swedish membership in the European Union?" Three response alternatives: "On the whole in favour; On the whole against; No definite opinion."

Comment: All respondents answering the question are included in the percentage base.

Principal investigator: Sören Holmberg, phone +46 31 786 12 27, e-mail: soren.holmberg@pol.gu.se.

Data processed by Frida Vernersdotter, SOM Institute.

Percent in Favour of the Swedish Membership in the European Union among Women and Men, 1994–2010

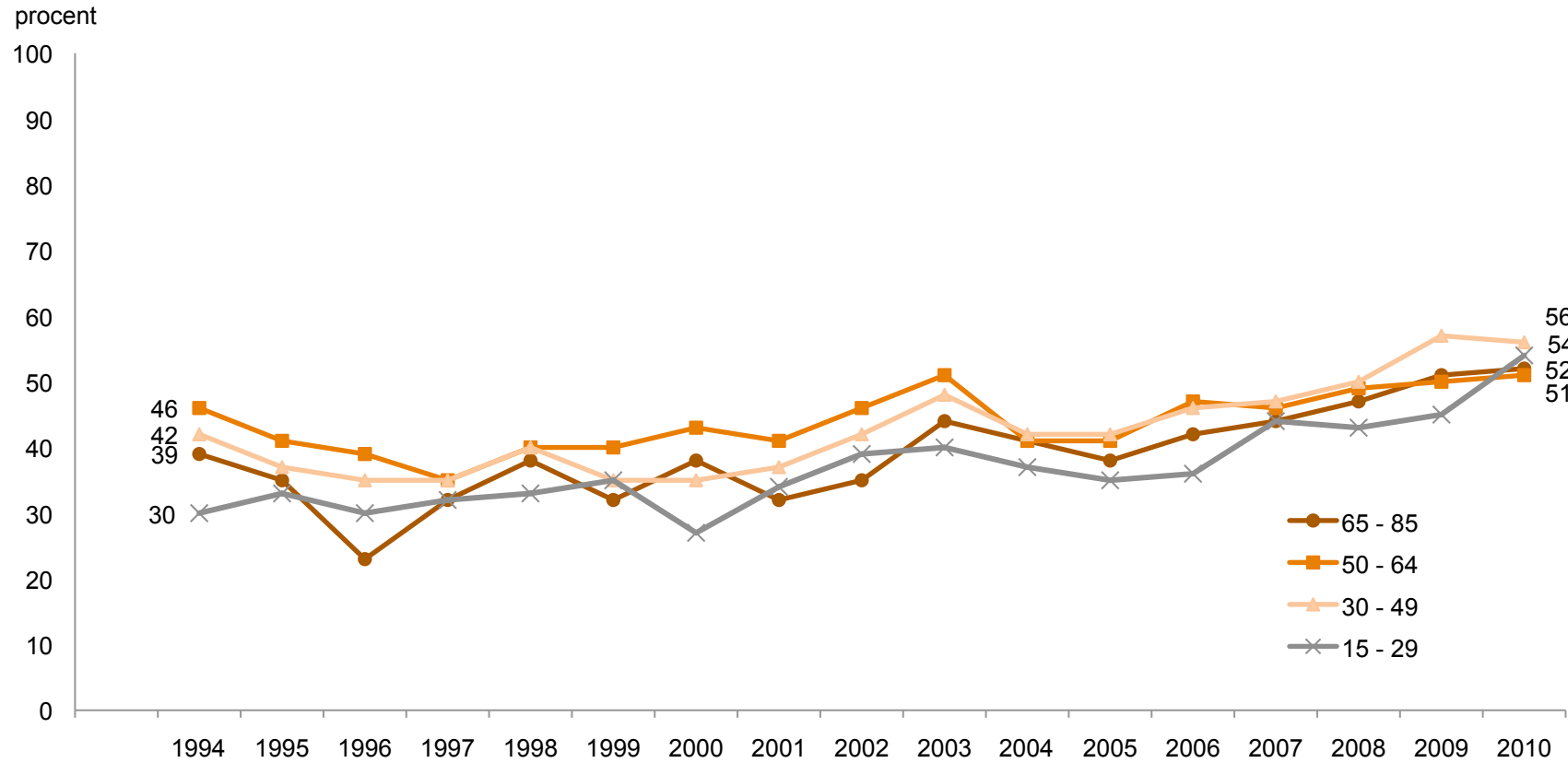


Data: The annual nationwide SOM survey, SOM Institute, University of Gothenburg, Sweden.

Principal investigator: Sören Holmberg, phone +46 31 786 12 27, e-mail: soren.holmberg@pol.gu.se.

Data processed by Frida Vernersdotter, SOM Institute.

Percent in Favour of the Swedish Membership in the European Union among Swedes in Different Age Groups, 1994–2010

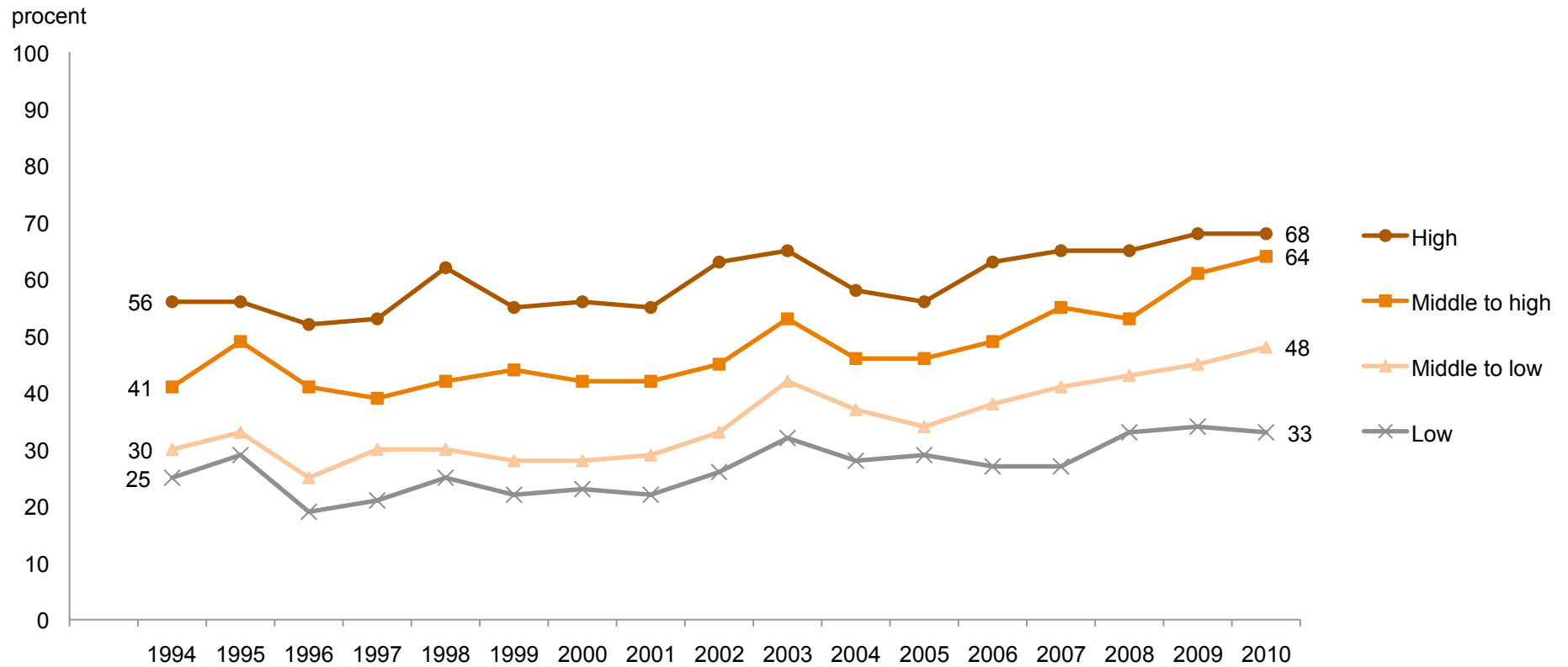


Data: The annual nationwide SOM survey, SOM Institute, University of Gothenburg, Sweden.

Principal investigator: Sören Holmberg, phone +46 31 786 12 27, e-mail: soren.holmberg@pol.gu.se.

Data processed by Frida Vernersdotter, SOM Institute.

Percent in Favour of the Swedish Membership in the European Union among Swedes in Different Educational Groups, 1994–2010

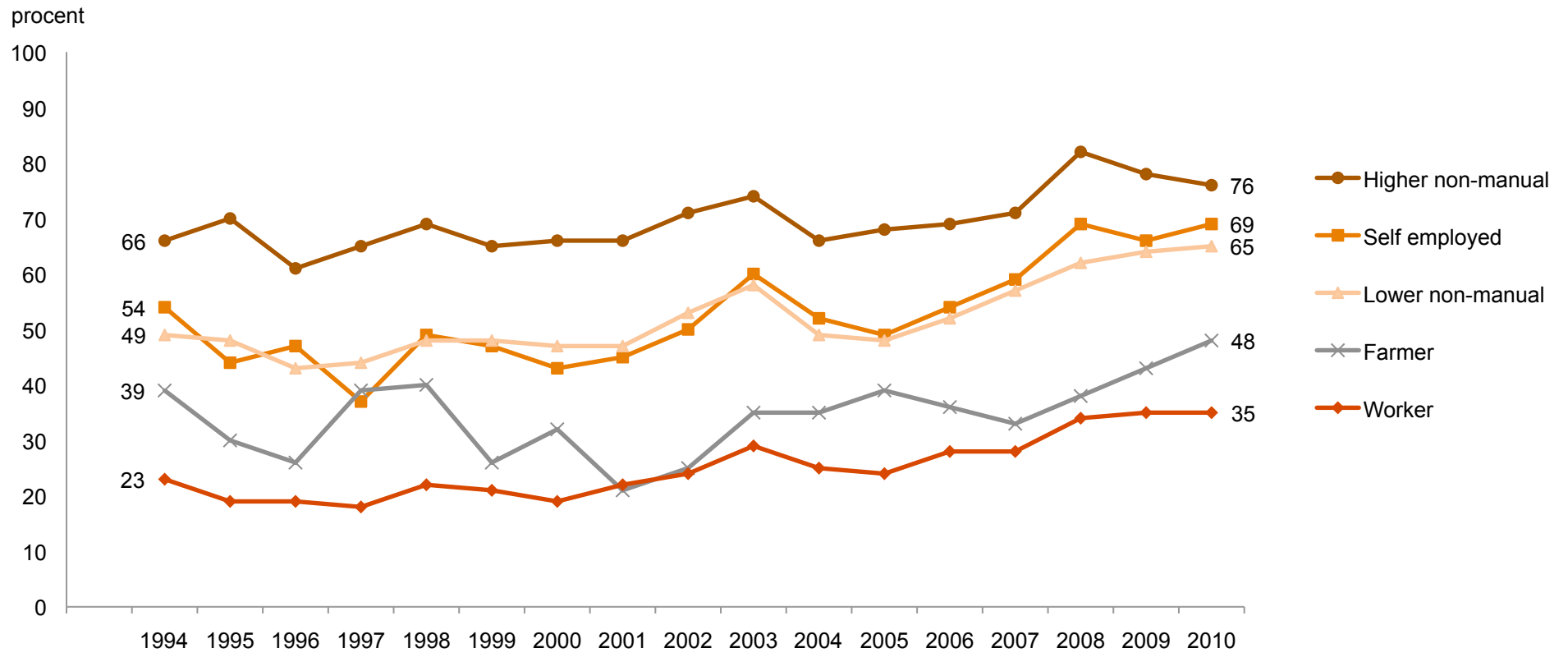


Data: The annual nationwide SOM survey, SOM Institute, University of Gothenburg, Sweden.

Principal investigator: Sören Holmberg, phone +46 31 786 12 27, e-mail: soren.holmberg@pol.gu.se.

Data processed by Frida Vernersdotter, SOM Institute.

Percent in Favour of the Swedish Membership in the European Union among Swedes Belonging to Different Subjective Family Classes, 1994–2010

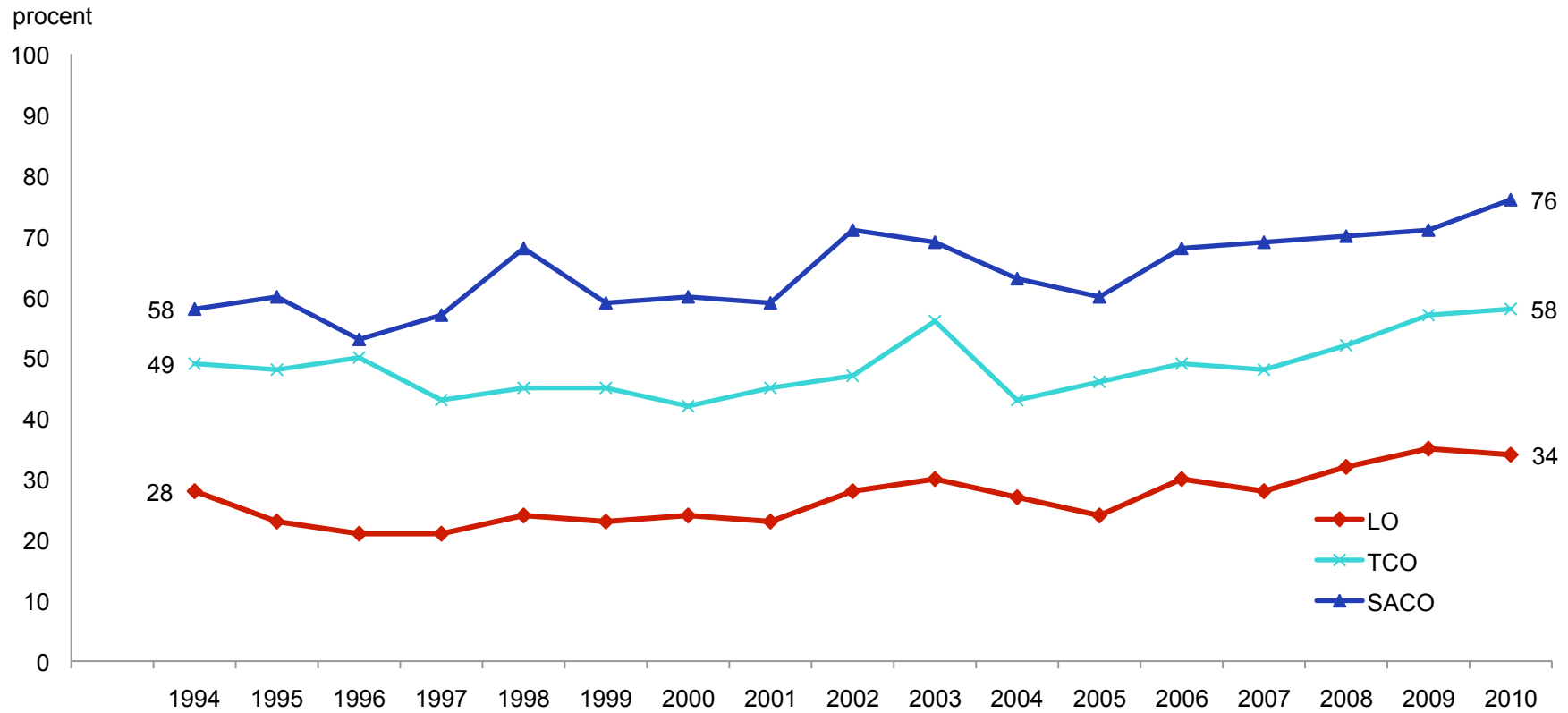


Data: The annual nationwide SOM survey, SOM Institute, University of Gothenburg, Sweden.

Principal investigator: Sören Holmberg, phone +46 31 786 12 27, e-mail: soren.holmberg@pol.gu.se.

Data processed by Frida Vernersdotter, SOM Institute.

Percent in Favour of the Swedish Membership in the European Union among Members of Different Trade Unions, 1994–2010

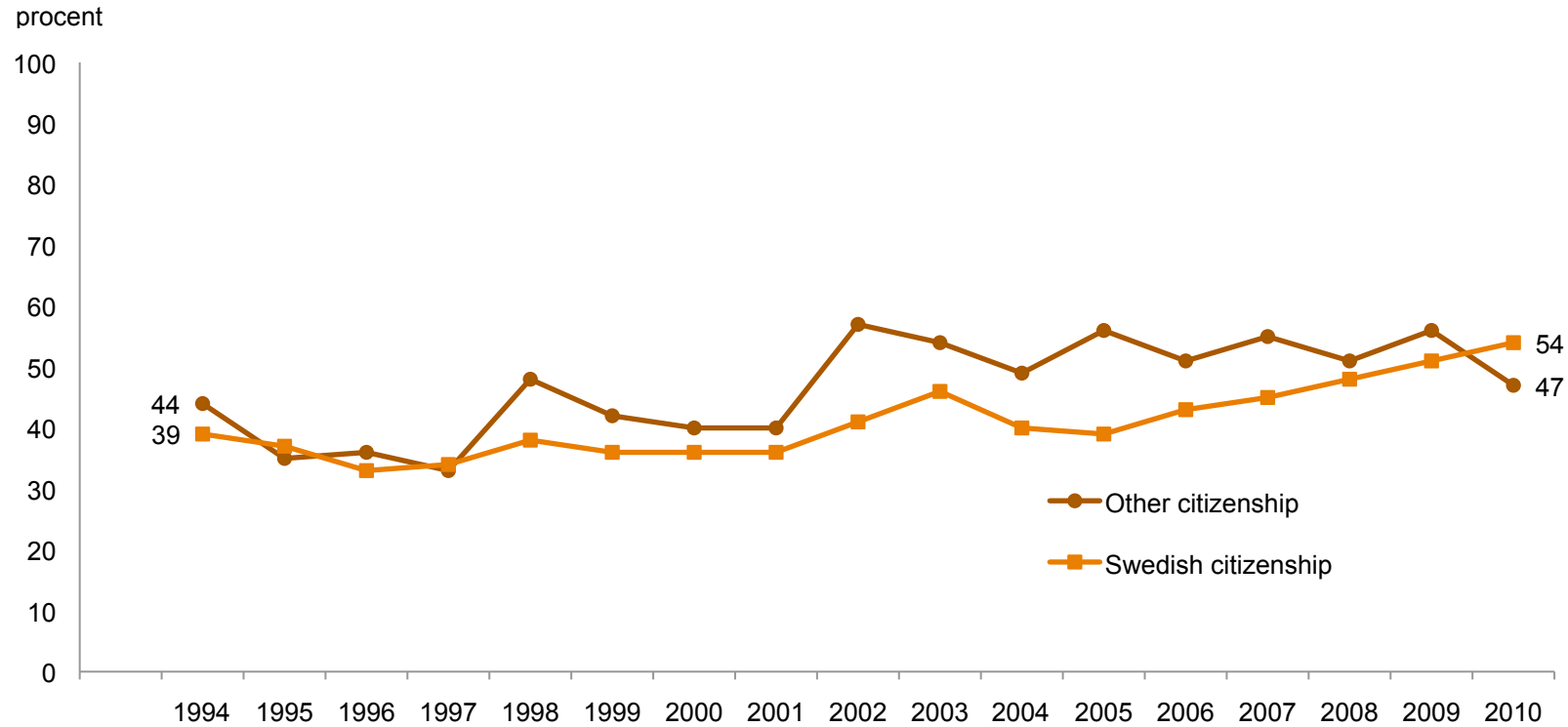


Data: The annual nationwide SOM survey, SOM Institute, University of Gothenburg, Sweden.

Principal investigator: Sören Holmberg, phone +46 31 786 12 27, e-mail: soren.holmberg@pol.gu.se.

Data processed by Frida Vernersdotter, SOM Institute.

Percent in Favour of the Swedish Membership in the European Union among Swedish Citizens and Non-Citizens, 1994–2010

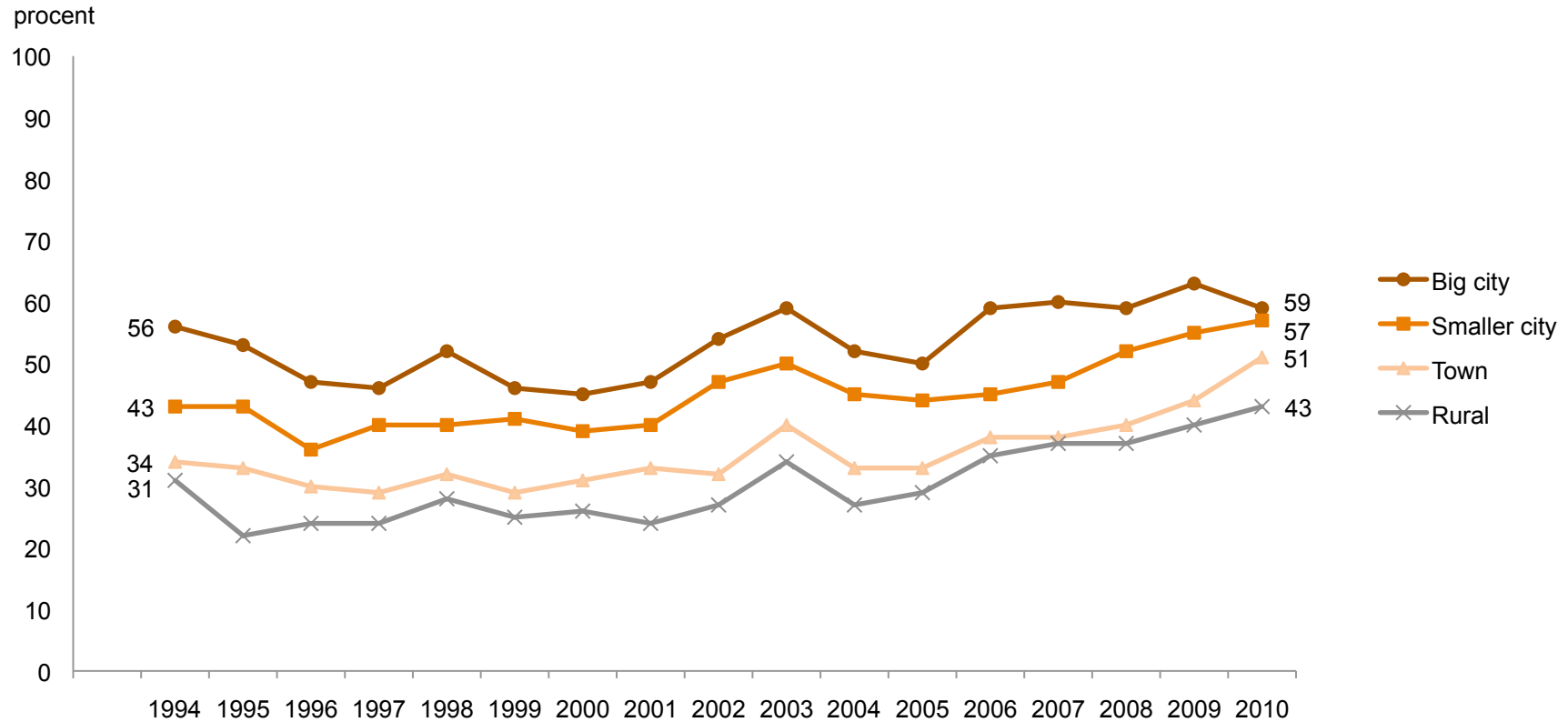


Data: The annual nationwide SOM survey, SOM Institute, University of Gothenburg, Sweden.

Principal investigator: Sören Holmberg, phone +46 31 786 12 27, e-mail: soren.holmberg@pol.gu.se.

Data processed by Frida Vernersdotter, SOM Institute.

Percent in Favour of the Swedish Membership in the European Union among Swedes Living in Cities or Rural Areas, 1994–2010

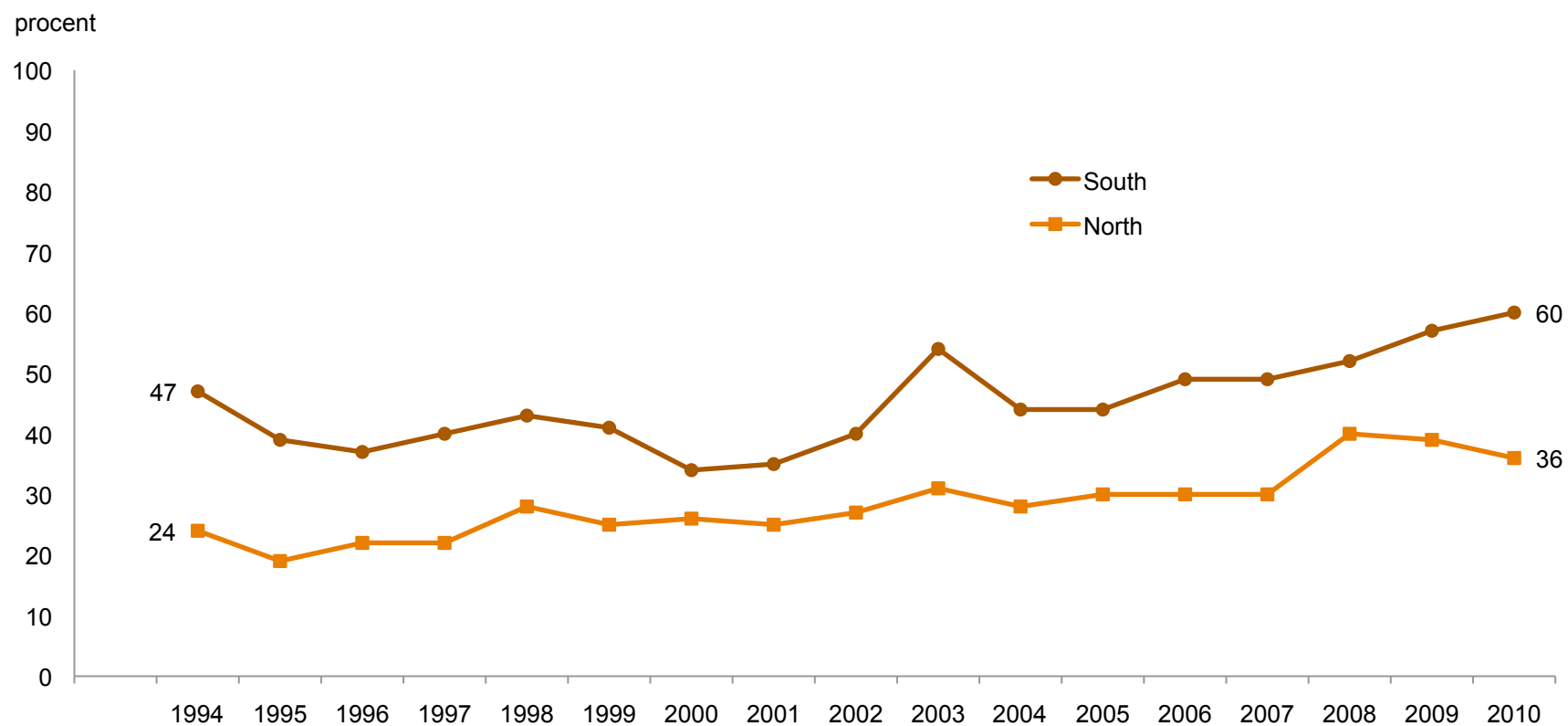


Data: The annual nationwide SOM survey, SOM Institute, University of Gothenburg, Sweden.

Principal investigator: Sören Holmberg, phone +46 31 786 12 27, e-mail: soren.holmberg@pol.gu.se.

Data processed by Frida Vernersdotter, SOM Institute.

Percent in Favour of the Swedish Membership in the European Union among Swedes Living in the North or in the South of Sweden, 1994–2010



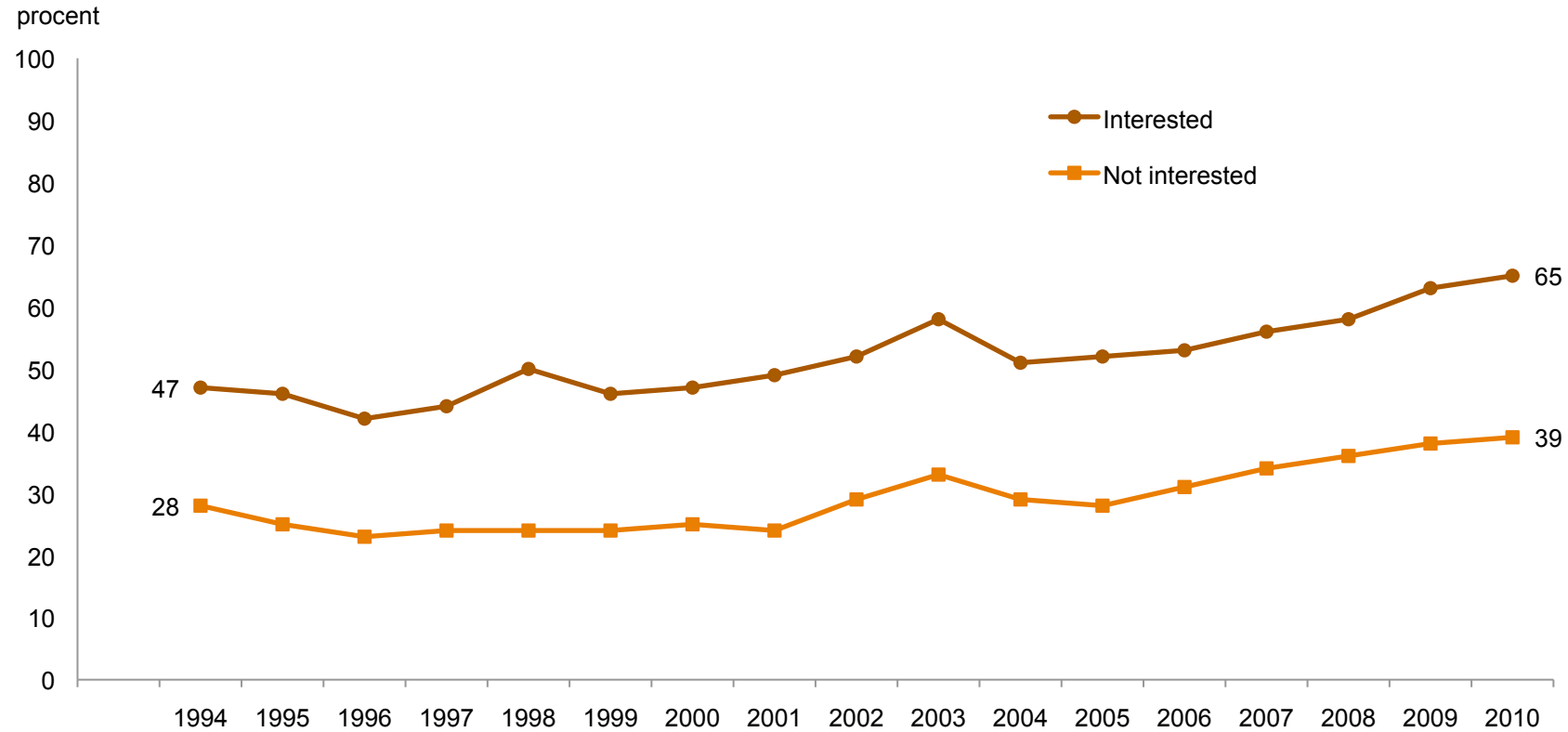
Comment: The South is defined as Southern Sweden (Skåne and Blekinge) and the North is defined as Upper Norrland.

Data: The annual nationwide SOM survey, SOM Institute, University of Gothenburg, Sweden.

Principal investigator: Sören Holmberg, phone +46 31 786 12 27, e-mail: soren.holmberg@pol.gu.se.

Data processed by Frida Vernersdotter, SOM Institute.

Percent in Favour of the Swedish Membership in the European Union among Swedes with Different Degrees of Political Interest, 1994–2010

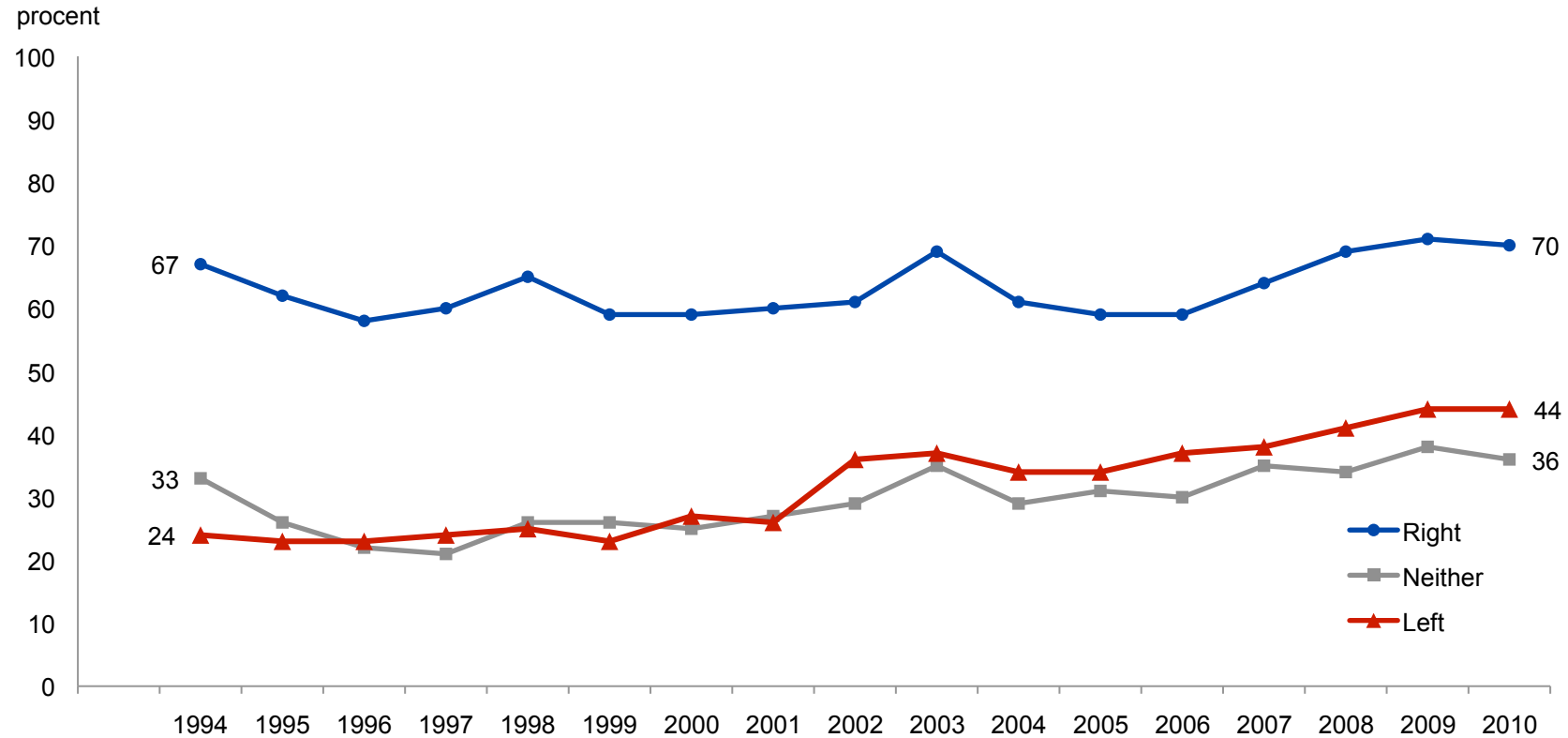


Data: The annual nationwide SOM survey, SOM Institute, University of Gothenburg, Sweden.

Principal investigator: Sören Holmberg, phone +46 31 786 12 27, e-mail: soren.holmberg@pol.gu.se.

Data processed by Frida Vernersdotter, SOM Institute.

Percent in Favour of the Swedish Membership in the European Union among Swedes with Different Left-Right Ideological Self-Placements, 1994–2010

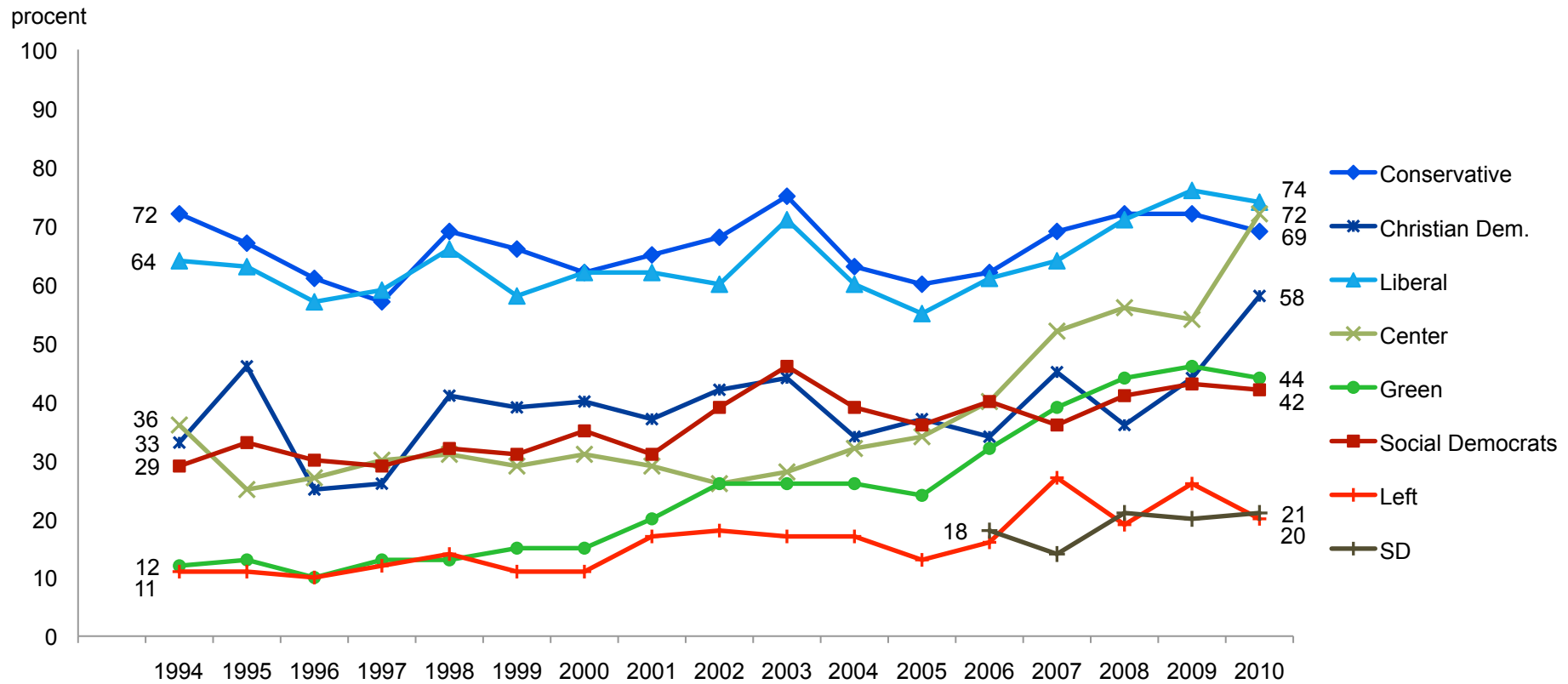


Data: The annual nationwide SOM survey, SOM Institute, University of Gothenburg, Sweden.

Principal investigator: Sören Holmberg, phone +46 31 786 12 27, e-mail: soren.holmberg@pol.gu.se.

Data processed by Frida Vernersdotter, SOM Institute

Percent in Favour of the Swedish Membership in the European Union among Swedes with Different Party Sympathies, 1994–2010

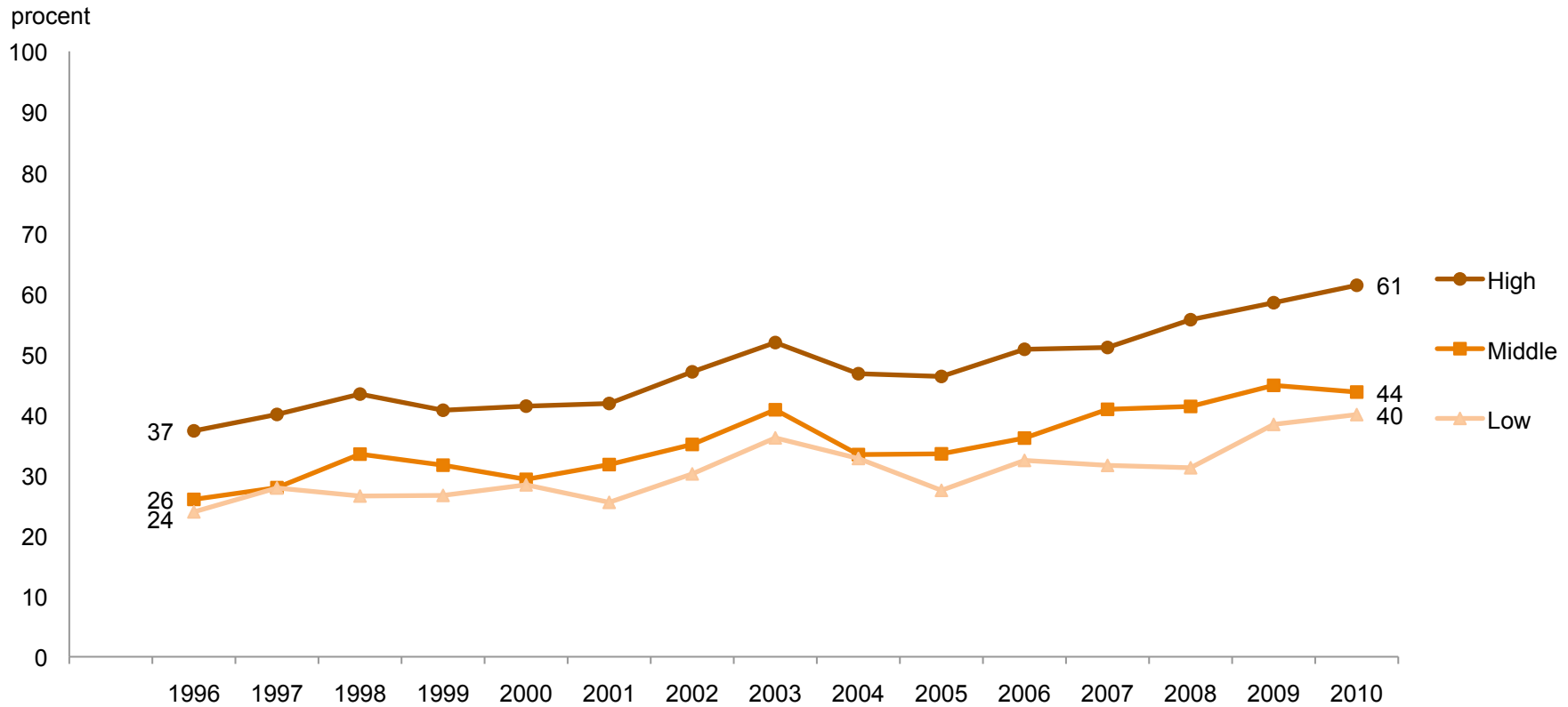


Data: The annual nationwide SOM survey, SOM Institute, University of Gothenburg, Sweden.

Principal investigator: Sören Holmberg, phone +46 31 786 12 27, e-mail: soren.holmberg@pol.gu.se.

Data processed by Frida Vernersdotter, SOM Institute.

Percent in Favour of the Swedish Membership in the European Union among Swedes with Different Degrees of General Trust in Other People, 1996–2010

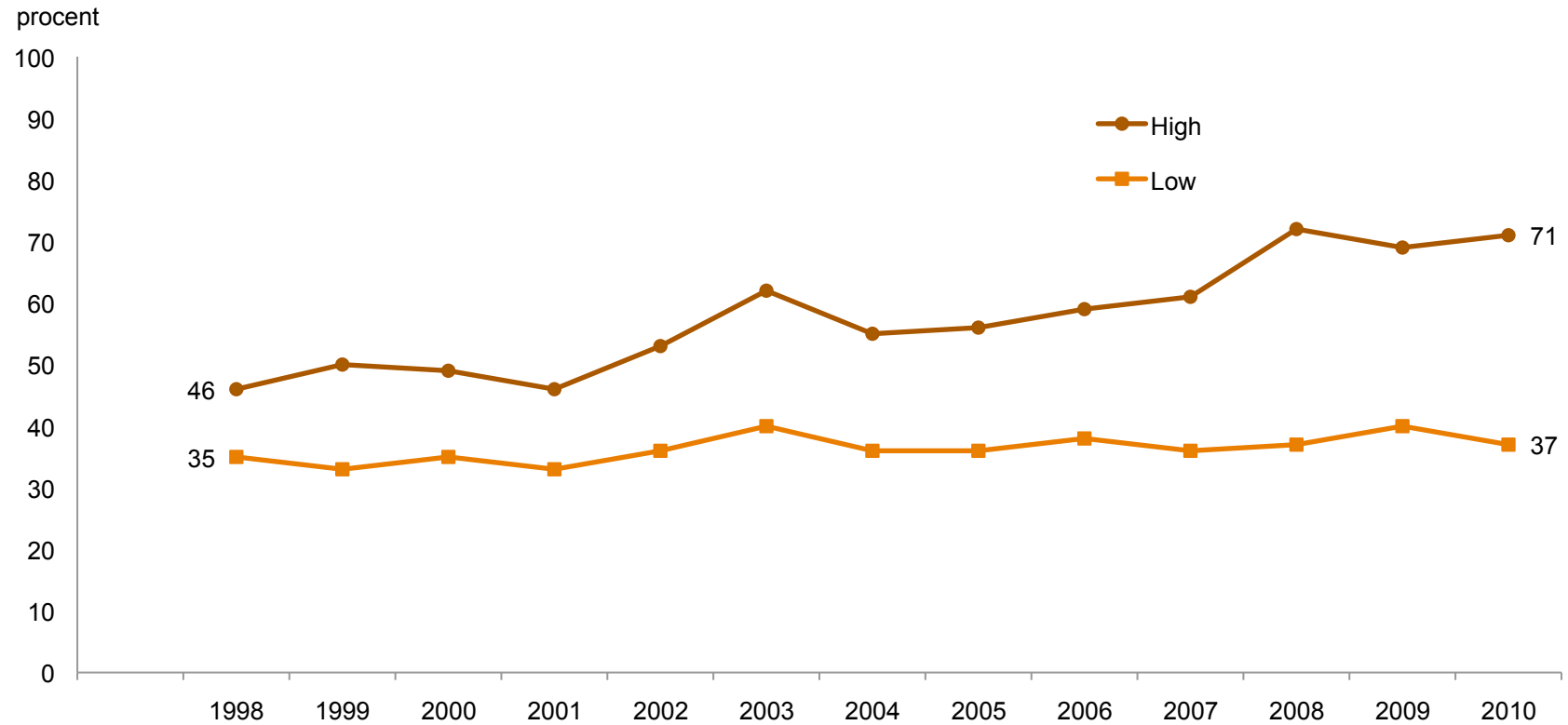


Data: The annual nationwide SOM survey, SOM Institute, University of Gothenburg, Sweden.

Principal investigator: Sören Holmberg, phone +46 31 786 12 27, e-mail: soren.holmberg@pol.gu.se.

Data processed by Frida Vernersdotter, SOM Institute.

Percent in Favour of the Swedish Membership in the European Union among Swedes with Different Degrees of General Trust in Politicians, 1998–2010

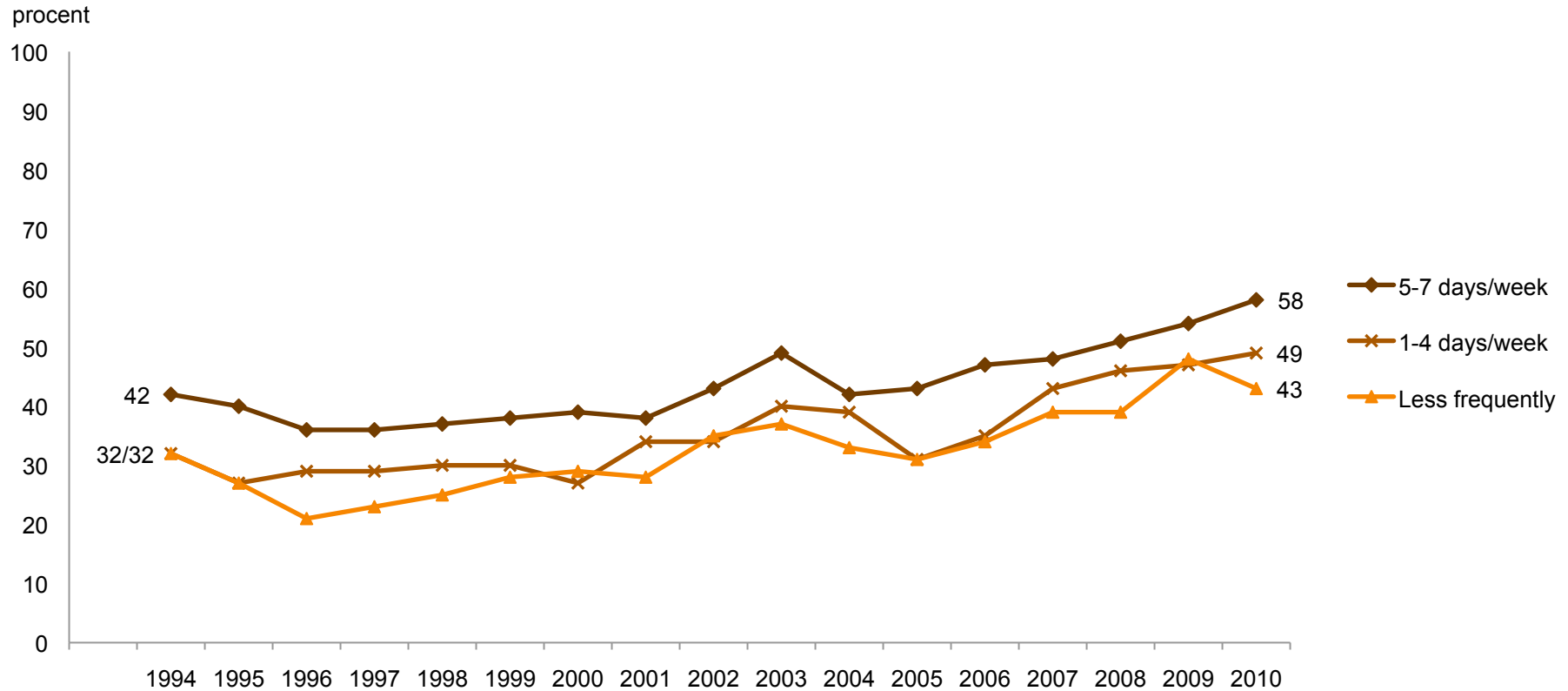


Data: The annual nationwide SOM survey, SOM Institute, University of Gothenburg, Sweden.

Principal investigator: Sören Holmberg, phone +46 31 786 12 27, e-mail: soren.holmberg@pol.gu.se.

Data processed by Frida Vernersdotter, SOM Institute.

Percent in Favour of the Swedish Membership in the European Union among Morning Paper Readers, 1994–2010

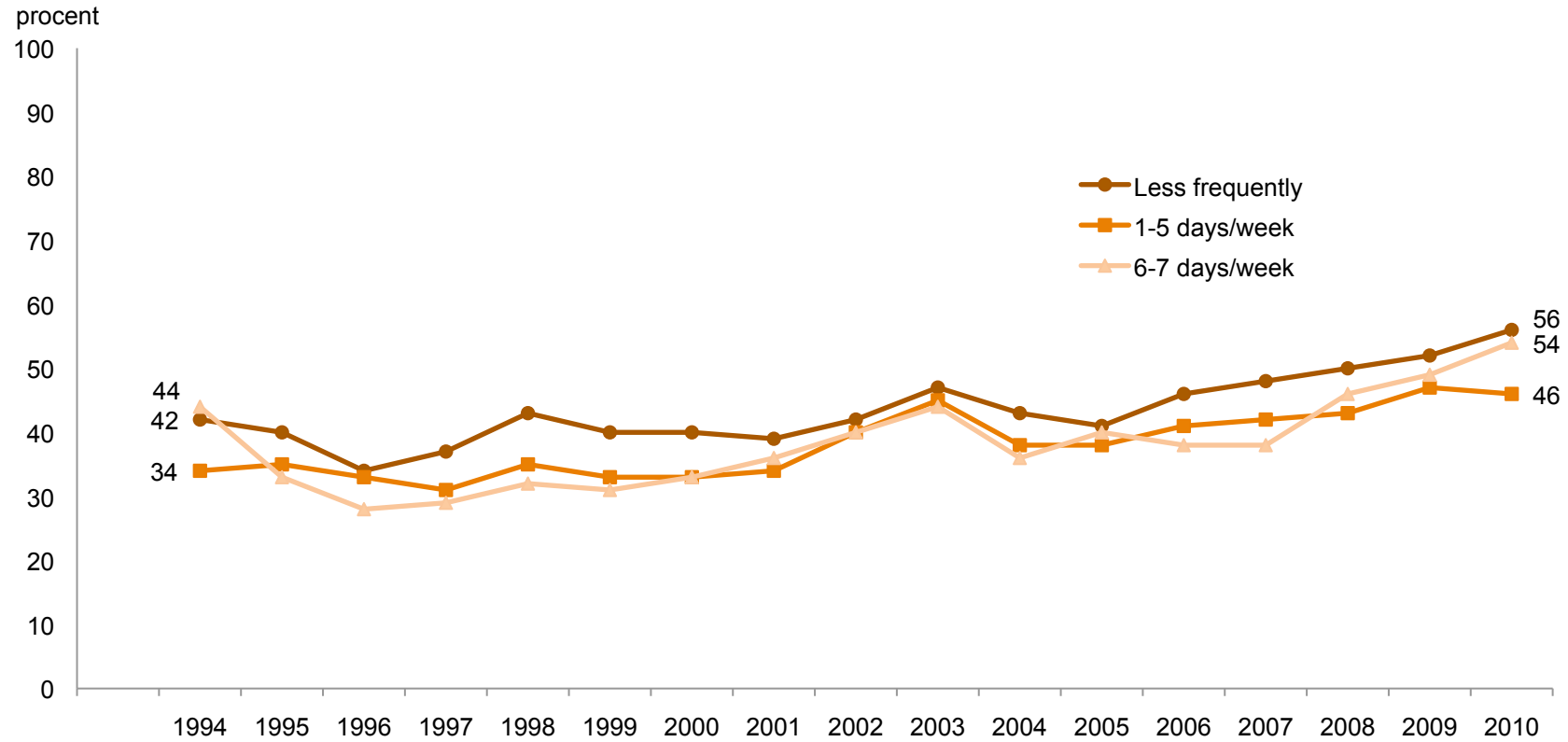


Data: The annual nationwide SOM survey, SOM Institute, University of Gothenburg, Sweden.

Principal investigator: Sören Holmberg, phone +46 31 786 12 27, e-mail: soren.holmberg@pol.gu.se.

Data processed by Frida Vernersdotter, SOM Institute.

Percent in Favour of the Swedish Membership in the European Union among Evening Paper Readers, 1994–2010

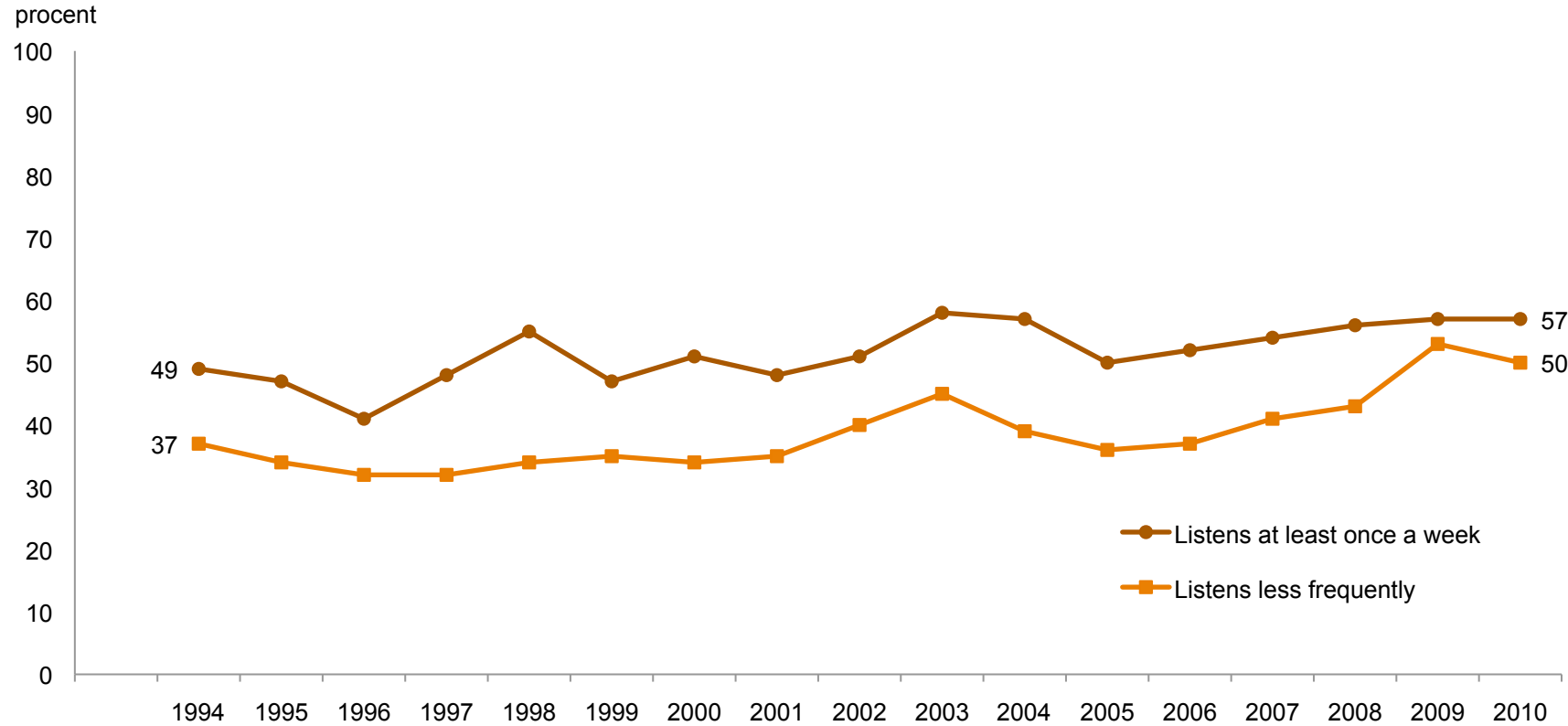


Data: The annual nationwide SOM survey, SOM Institute, University of Gothenburg, Sweden.

Principal investigator: Sören Holmberg, phone +46 31 786 12 27, e-mail: soren.holmberg@pol.gu.se.

Data processed by Frida Vernersdotter, SOM Institute.

Percent in Favour of the Swedish Membership in the European Union among Listeners to Public Service Radio News (“Ekot”), 1994–2010

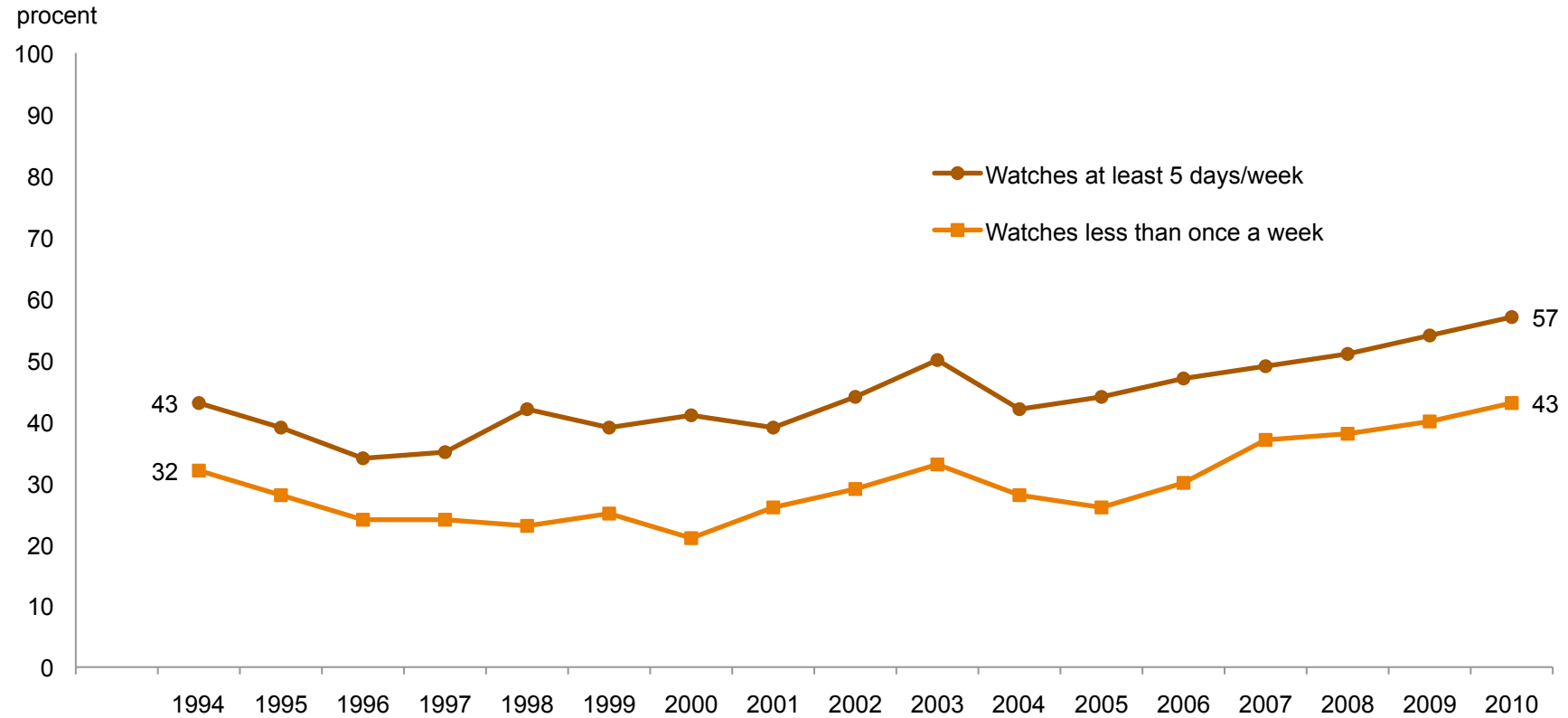


Data: The annual nationwide SOM survey, SOM Institute, University of Gothenburg, Sweden.

Principal investigator: Sören Holmberg, phone +46 31 786 12 27, e-mail: soren.holmberg@pol.gu.se.

Data processed by Frida Vernersdotter, SOM Institute.

Percent in Favour of the Swedish Membership in the European Union among Viewers of Public Service Television News (SVT), 1994–2010

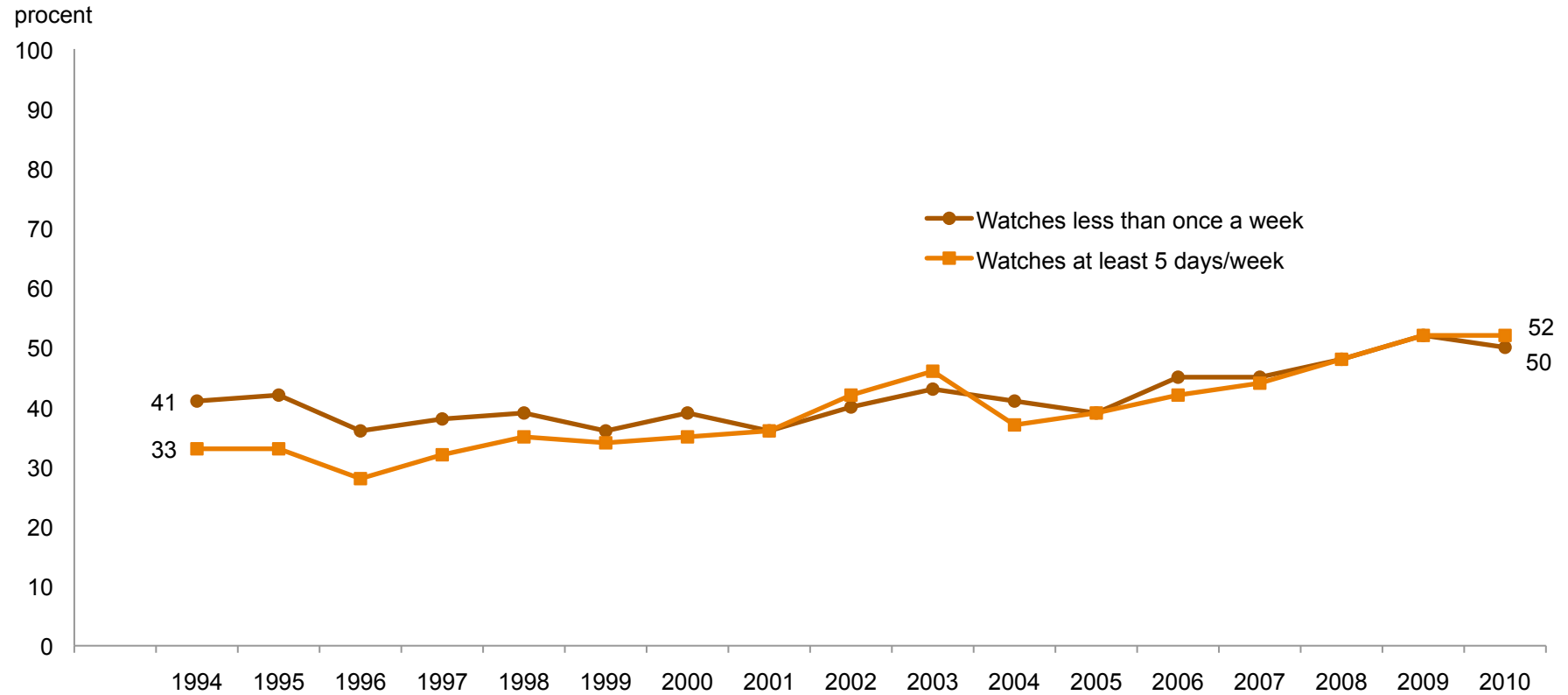


Data: The annual nationwide SOM survey, SOM Institute, University of Gothenburg, Sweden.

Principal investigator: Sören Holmberg, phone +46 31 786 12 27, e-mail: soren.holmberg@pol.gu.se.

Data processed by Frida Vernersdotter, SOM Institute.

Percent in Favour of the Swedish Membership in the European Union among Viewers of Commercial Television News (TV4), 1994–2010

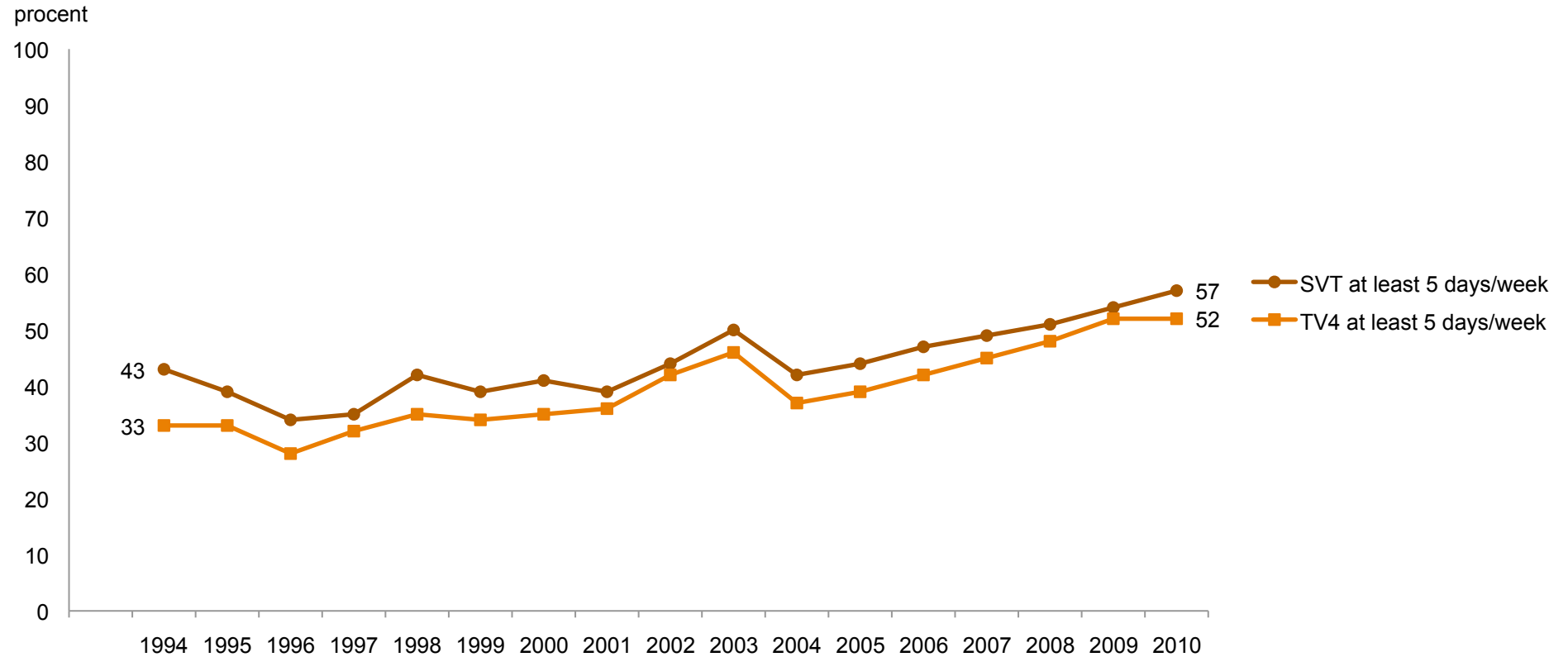


Data: The annual nationwide SOM survey, SOM Institute, University of Gothenburg, Sweden.

Principal investigator: Sören Holmberg, phone +46 31 786 12 27, e-mail: soren.holmberg@pol.gu.se.

Data processed by Frida Vernersdotter, SOM Institute.

Percent in Favour of the Swedish Membership in the European Union among Viewers of Television News on SVT or TV4, 1994–2010



Data: The annual nationwide SOM survey, SOM Institute, University of Gothenburg, Sweden.

Principal investigator: Sören Holmberg, phone +46 31 786 12 27, e-mail: soren.holmberg@pol.gu.se.

Data processed by Frida Vernersdotter, SOM Institute.

The SOM Institute, University of Gothenburg, has collected research data and presented annual trend analyses since 1986.

The SOM Institute | Seminariegatan 1B | Box 710, SE-405 30 Gothenburg
+46 (0)31 786 3300 | info@som.gu.se | www.som.gu.se

