

SOM-rapport nr 2009:25

S O M

Swedish Opinion on  
Nuclear Waste Management  
1986-2008

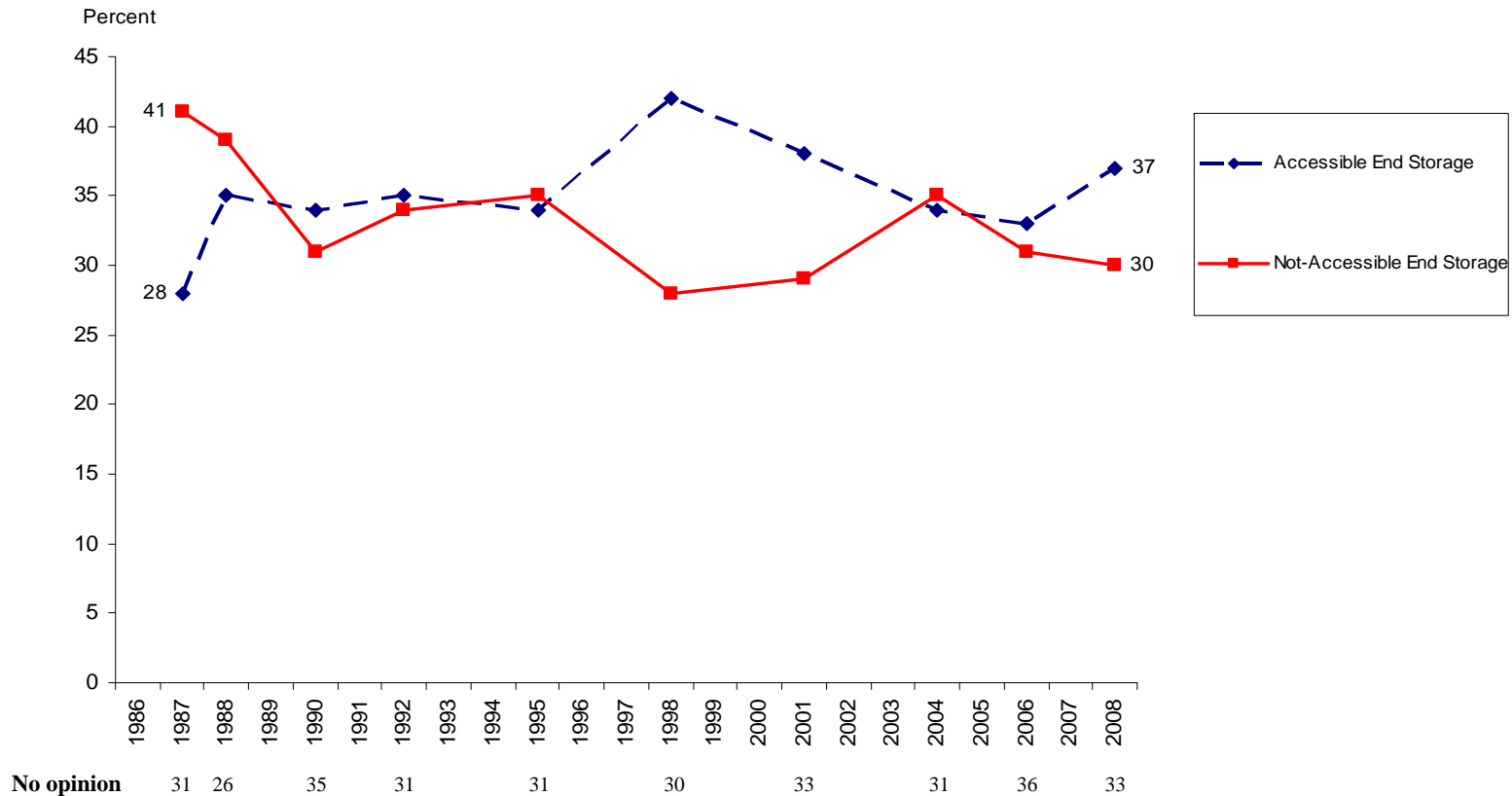
Per Hedberg  
Sören Holmberg

**SOM INSTITUTE**  
*society opinion media*

society opinion media society opinion media



## Swedish Opinion on How to End Store High-Level Nuclear Waste – Accessible or Not-Accessible End Storage?



**Question:** “What is your view on how Sweden shall end store the high-level waste from nuclear power production that is the most dangerous waste?” Three response alternatives: “We shall once and for all end store the high-level waste so that it is not accessible in the future”, “We shall end store the high-level waste so that people in the future can supervise and access it”, “Have no determined opinion”.

**Comment:** All respondents who answered the question are included in the percent calculations.

**Source:** The SOM Institute, University of Gothenburg; Annual nationwide surveys in Sweden; sample size 3000 persons 16-85 years old; mail questionnaires with an average response rate around 60-65 percent. The report has been produced within the research project *Energy Opinion in Sweden* financially supported by *The Swedish Energy Authority*. Responsible for graph editing has been Rebecka Åsbrink.

## Percent Swedes in Favour of a Not-Accessible End Storage of High-Level Nuclear Waste

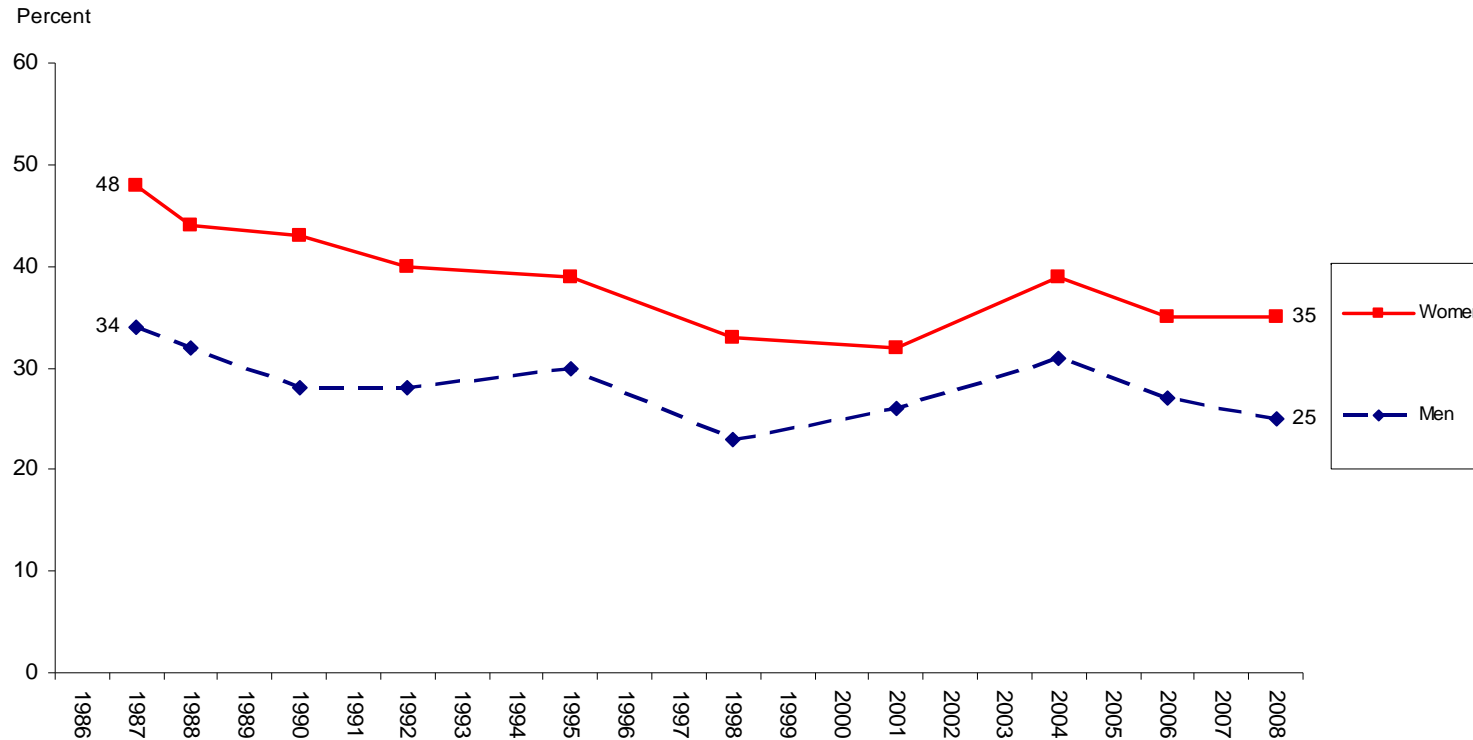


**Question:** “What is your view on how Sweden shall end store the high-level waste from nuclear power production that is the most dangerous waste?” Three response alternatives: “We shall once and for all end store the high-level waste so that it is not accessible in the future”, “We shall end store the high-level waste so that people in the future can supervise and access it”, “Have no determined opinion”.

**Comment:** All respondents who answered the question are included in the percent calculations.

**Source:** The SOM Institute, University of Gothenburg; Annual nationwide surveys in Sweden; sample size 3000 persons 16-85 years old; mail questionnaires with an average response rate around 60-65 percent. The report has been produced within the research project *Energy Opinion in Sweden* financially supported by *The Swedish Energy Authority*. Responsible for graph editing has been Rebecka Åsbrink.

## Percent in Favour of a Not-Accessible End Storage of High-Level Nuclear Waste Among Women and Men

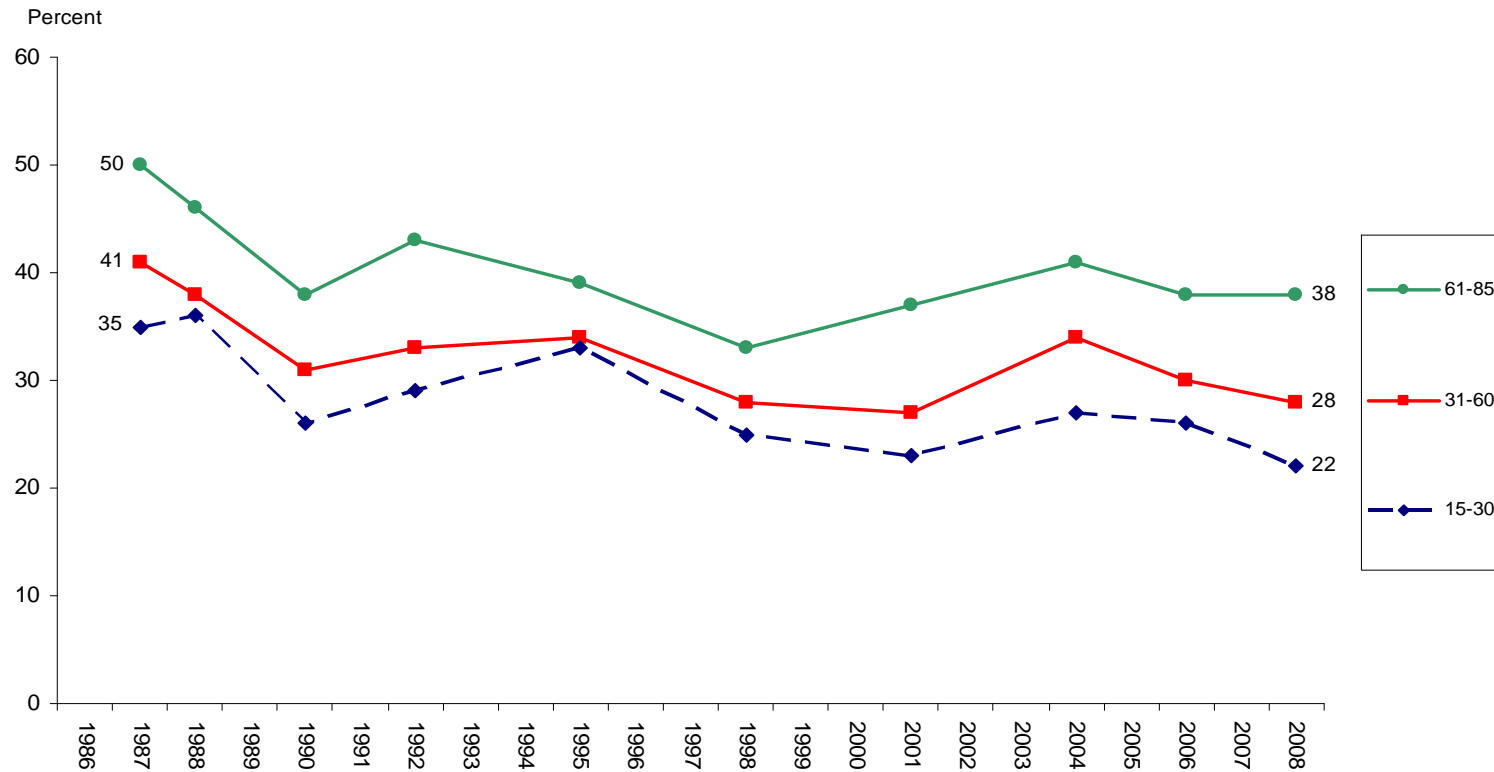


**Question:** “What is your view on how Sweden shall end store the high-level waste from nuclear power production that is the most dangerous waste?” Three response alternatives: “We shall once and for all end store the high-level waste so that it is not accessible in the future”, “We shall end store the high-level waste so that people in the future can supervise and access it”, “Have no determined opinion”.

**Comment:** All respondents who answered the question are included in the percent calculations.

**Source:** The SOM Institute, University of Gothenburg; Annual nationwide surveys in Sweden; sample size 3000 persons 16-85 years old; mail questionnaires with an average response rate around 60-65 percent. The report has been produced within the research project *Energy Opinion in Sweden* financially supported by *The Swedish Energy Authority*. Responsible for graph editing has been Rebecka Åsbrink.

## Percent in Favour of a Not-Accessible End Storage of High-Level Nuclear Waste Among Swedes in Different Age Groups

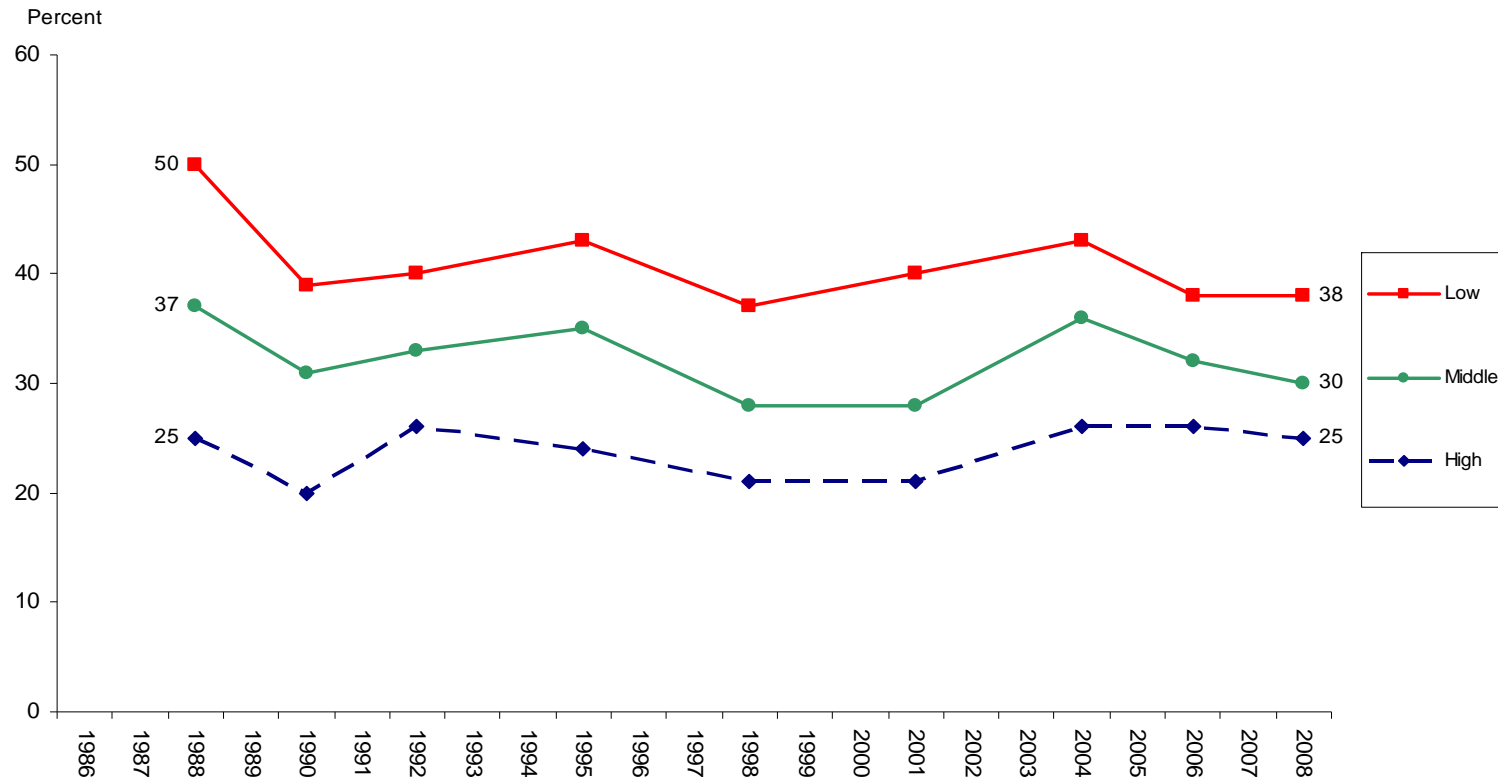


**Question:** “What is your view on how Sweden shall end store the high-level waste from nuclear power production that is the most dangerous waste?” Three response alternatives: “We shall once and for all end store the high-level waste so that it is not accessible in the future”, “We shall end store the high-level waste so that people in the future can supervise and access it”, “Have no determined opinion”.

**Comment:** All respondents who answered the question are included in the percent calculations.

**Source:** The SOM Institute, University of Gothenburg; Annual nationwide surveys in Sweden; sample size 3000 persons 16-85 years old; mail questionnaires with an average response rate around 60-65 percent. The report has been produced within the research project *Energy Opinion in Sweden* financially supported by *The Swedish Energy Authority*. Responsible for graph editing has been Rebecka Åsbrink.

## Percent in Favour of a Not-Accessible End Storage of High-Level Nuclear Waste Among Swedes in Different Educational Groups

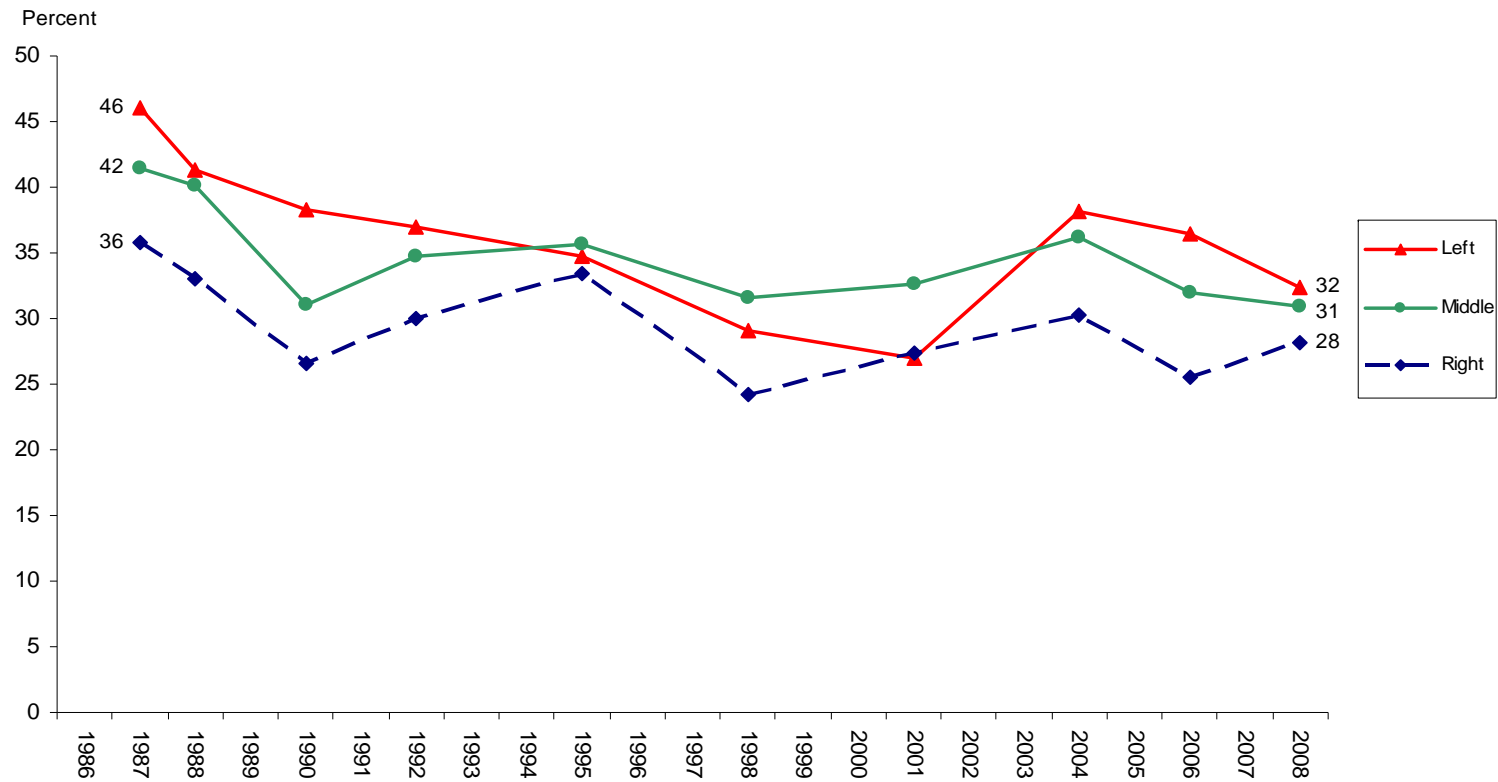


**Question:** “What is your view on how Sweden shall end store the high-level waste from nuclear power production that is the most dangerous waste?” Three response alternatives: “We shall once and for all end store the high-level waste so that it is not accessible in the future”, “We shall end store the high-level waste so that people in the future can supervise and access it”, “Have no determined opinion”.

**Comment:** All respondents who answered the question are included in the percent calculations.

**Source:** The SOM Institute, University of Gothenburg; Annual nationwide surveys in Sweden; sample size 3000 persons 16-85 years old; mail questionnaires with an average response rate around 60-65 percent. The report has been produced within the research project *Energy Opinion in Sweden* financially supported by *The Swedish Energy Authority*. Responsible for graph editing has been Rebecka Åsbrink.

## Percent in Favour of a Not-Accessible End Storage of High-Level Nuclear Waste Among Swedes with Different Ideological Self-Placements



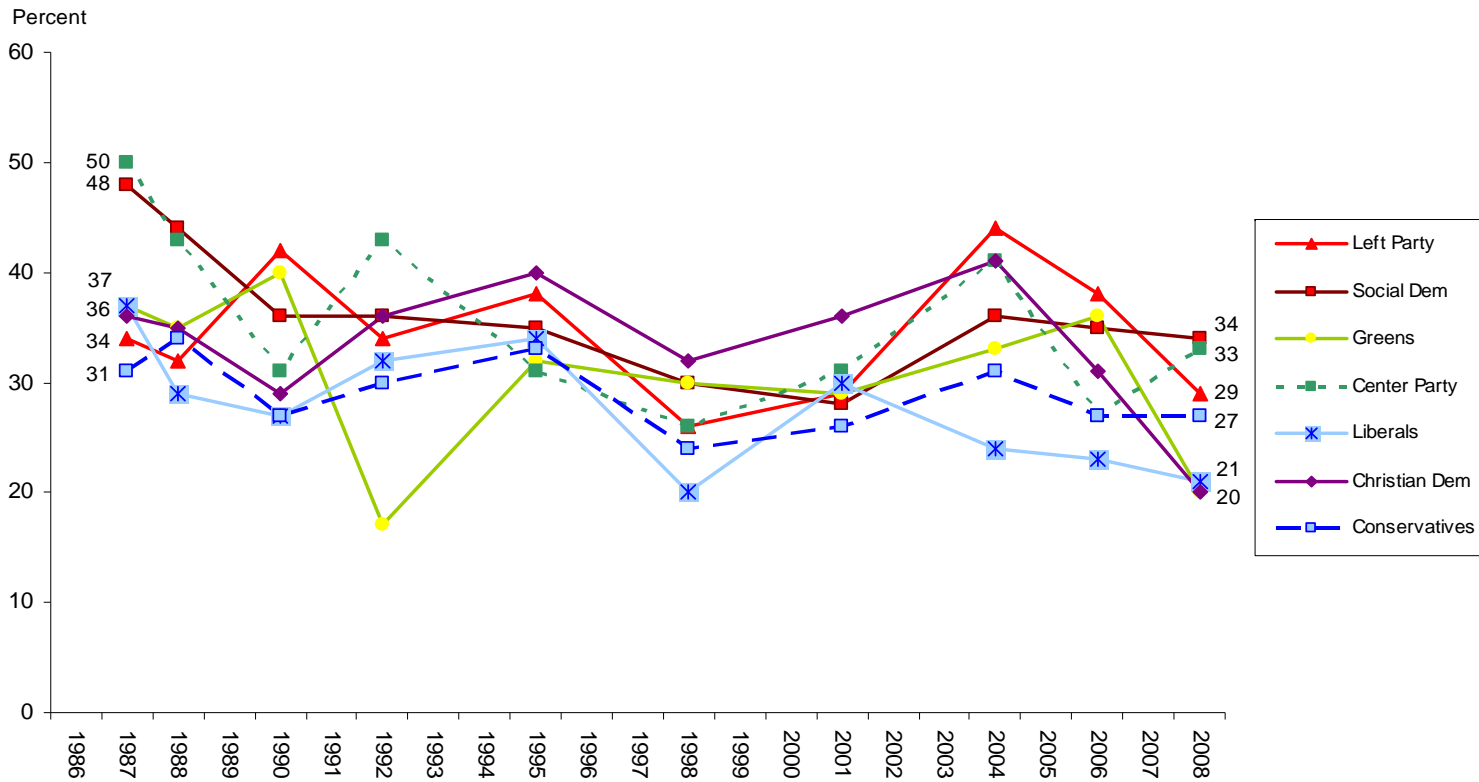
**Question:** “What is your view on how Sweden shall end store the high-level waste from nuclear power production that is the most dangerous waste?” Three response alternatives: “We shall once and for all end store the high-level waste so that it is not accessible in the future”, “We shall end store the high-level waste so that people in the future can supervise and access it”, “Have no determined opinion”.

**Comment:** All respondents who answered the question are included in the percent calculations.

**Source:** The SOM Institute, University of Gothenburg; Annual nationwide surveys in Sweden; sample size 3000 persons 16-85 years old; mail questionnaires with an average response rate around 60-65 percent. The report has been produced within the research project *Energy Opinion in Sweden* financially supported by *The Swedish Energy Authority*. Responsible for graph editing has been Rebecka Åsbrink.



## Percent in Favour of a Not-Accessible End Storage of High-Level Nuclear Waste Among Swedes with Different Party Sympathies

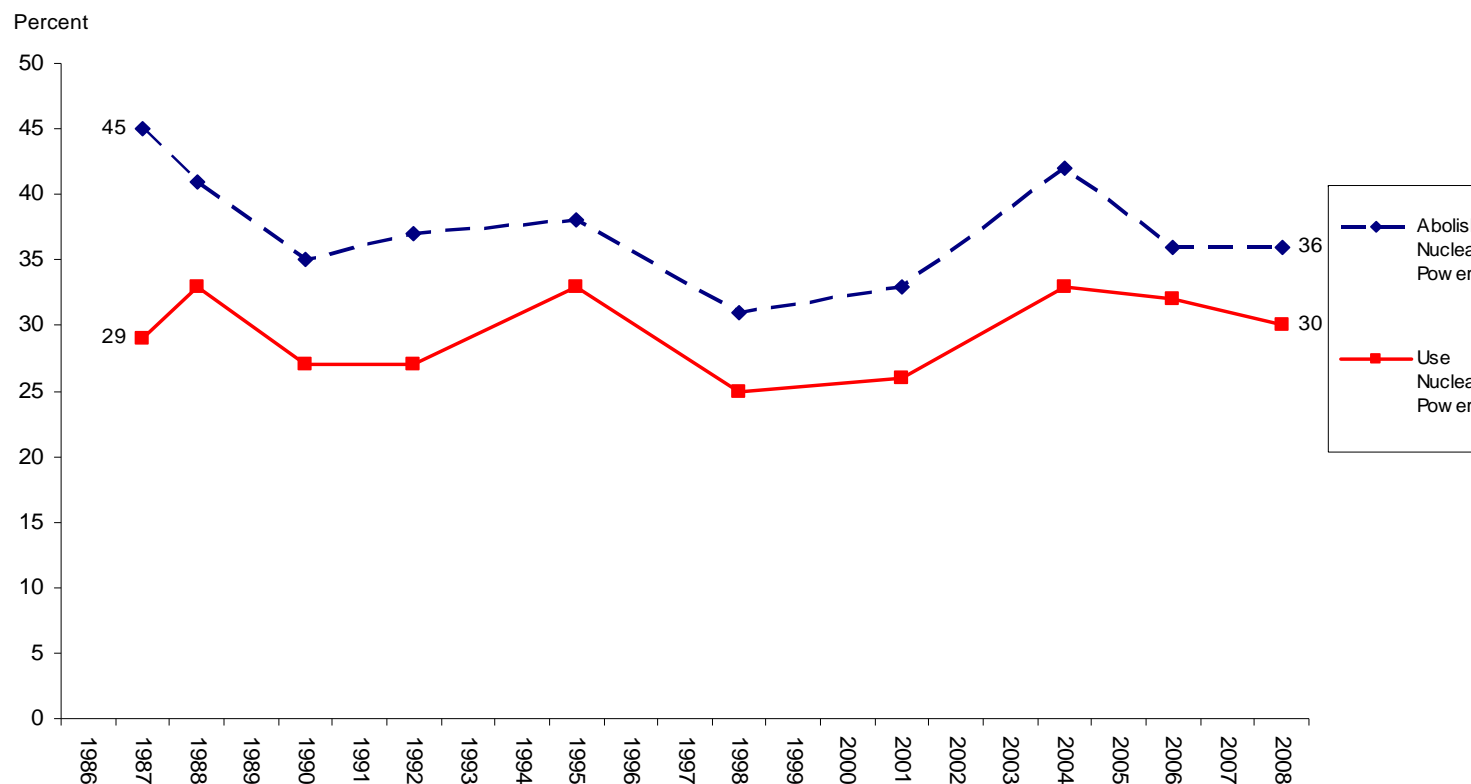


**Question:** “What is your view on how Sweden shall end store the high-level waste from nuclear power production that is the most dangerous waste?” Three response alternatives: “We shall once and for all end store the high-level waste so that it is not accessible in the future”, “We shall end store the high-level waste so that people in the future can supervise and access it”, “Have no determined opinion”.

**Comment:** All respondents who answered the question are included in the percent calculations. The result for New Democracy was 31 percent in 1992. For Sweden Democracy the results were 41 percent in 2006 and 32 percent in 2008.

**Source:** The SOM Institute, University of Gothenburg; Annual nationwide surveys in Sweden; sample size 3000 persons 16-85 years old; mail questionnaires with an average response rate around 60-65 percent. The report has been produced within the research project *Energy Opinion in Sweden* financially supported by *The Swedish Energy Authority*. Responsible for graph editing has been Rebecka Åsbrink.

## Percent in Favour of a Not-Accessible End Storage of High-Level Nuclear Waste Among Swedes with Different Opinions on the Long-Term Use of Nuclear Power in Sweden

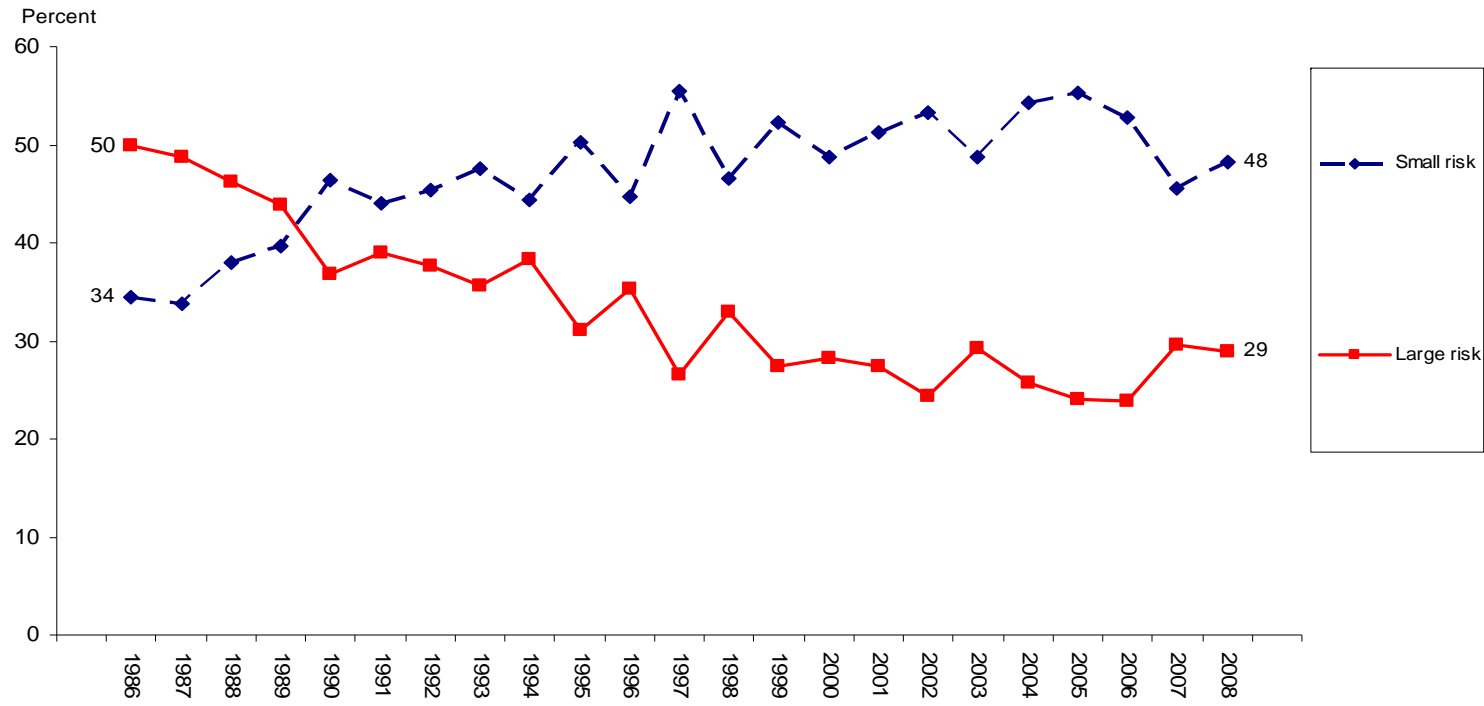


**Question:** “What is your view on how Sweden shall end store the high-level waste from nuclear power production that is the most dangerous waste?” Three response alternatives: “We shall once and for all end store the high-level waste so that it is not accessible in the future”, “We shall end store the high-level waste so that people in the future can supervise and access it”, “Have no determined opinion”.

**Comment:** All respondents who answered the question are included in the percent calculations.

**Source:** The SOM Institute, University of Gothenburg; Annual nationwide surveys in Sweden; sample size 3000 persons 16-85 years old; mail questionnaires with an average response rate around 60-65 percent. The report has been produced within the research project *Energy Opinion in Sweden* financially supported by *The Swedish Energy Authority*. Responsible for graph editing has been Rebecka Åsbrink.

## Swedes Assess the Risk That Sweden Can Not Manage and End Store High-Level Nuclear Waste in a Secure Way



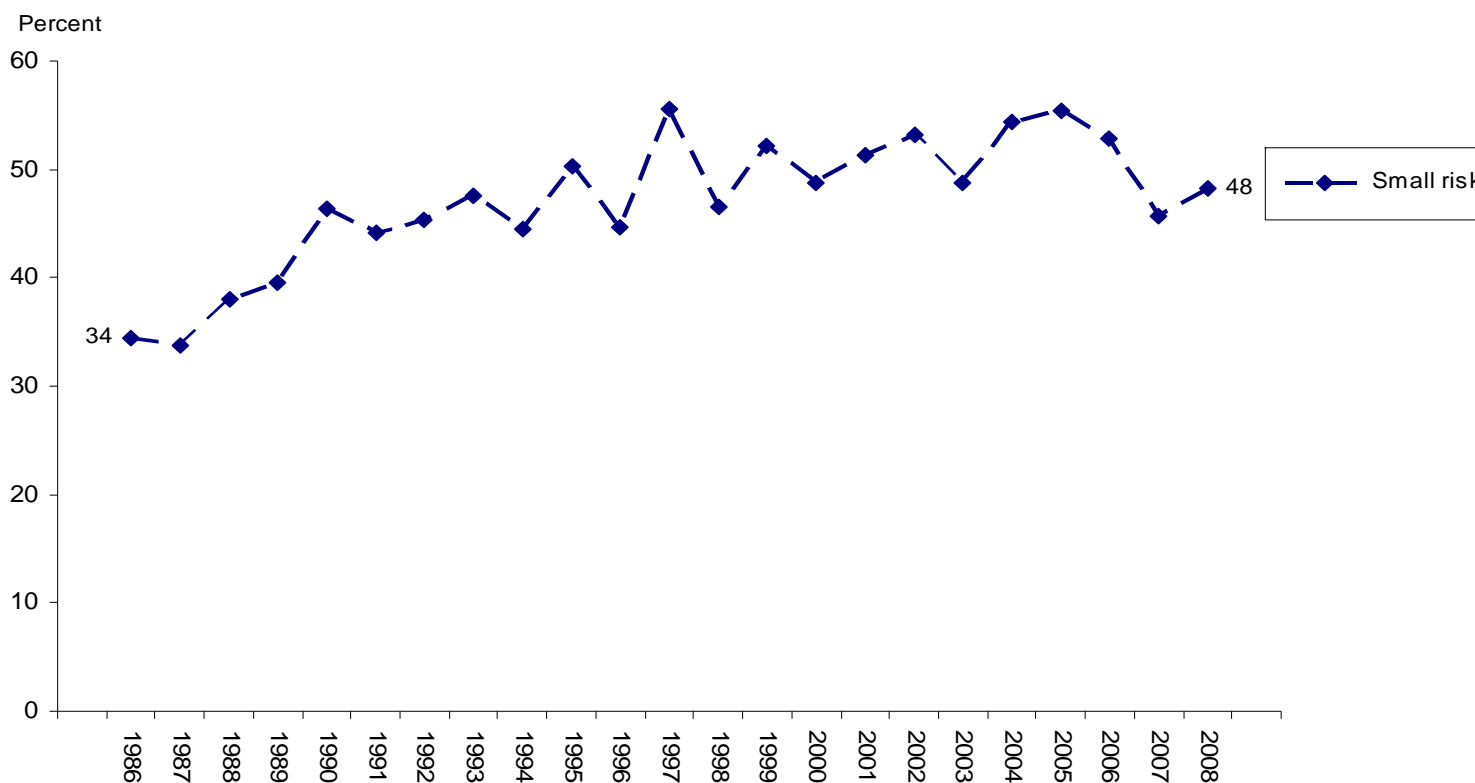
<b>Neither small nor large risk</b>	16	17	16	17	17	17	17	17	17	17	19	20	18	21	20	23	21	22	22	20	21	23	25	23
<b>Mean</b>	6,1	6,1	5,8	5,7	5,2	5,4	5,3	5,1	5,3	4,8	5,2	4,5	5,0	4,6	4,8	4,6	4,5	4,7	4,5	4,4	4,4	4,9	4,8	

**Question:** “On a scale between 1 (small risk) and 10 (large risk) how would you assess the risk that Sweden can not manage and end store high-level nuclear waste in a secure way?”

**Comment:** The scale answers have been classified in three groups; 1-4 (small risk), 5-6 (neither small nor large risk), 7-10 (large risk). All respondents who answered the scale question are included in the percent calculations. The mean has a minimum of 1,0 and a maximum of 10,0.

**Source:** The SOM Institute, University of Gothenburg; Annual nationwide surveys in Sweden; sample size 3000 persons 16-85 years old; mail questionnaires with an average response rate around 60-65 percent. The report has been produced within the research project *Energy Opinion in Sweden* financially supported by *The Swedish Energy Authority*. Responsible for graph editing has been Rebecka Åsbrink.

### Percent Swedes Who Think That There is a Small Risk That Sweden Can Not Manage and End Store High-Level Nuclear Waste in a Secure Way

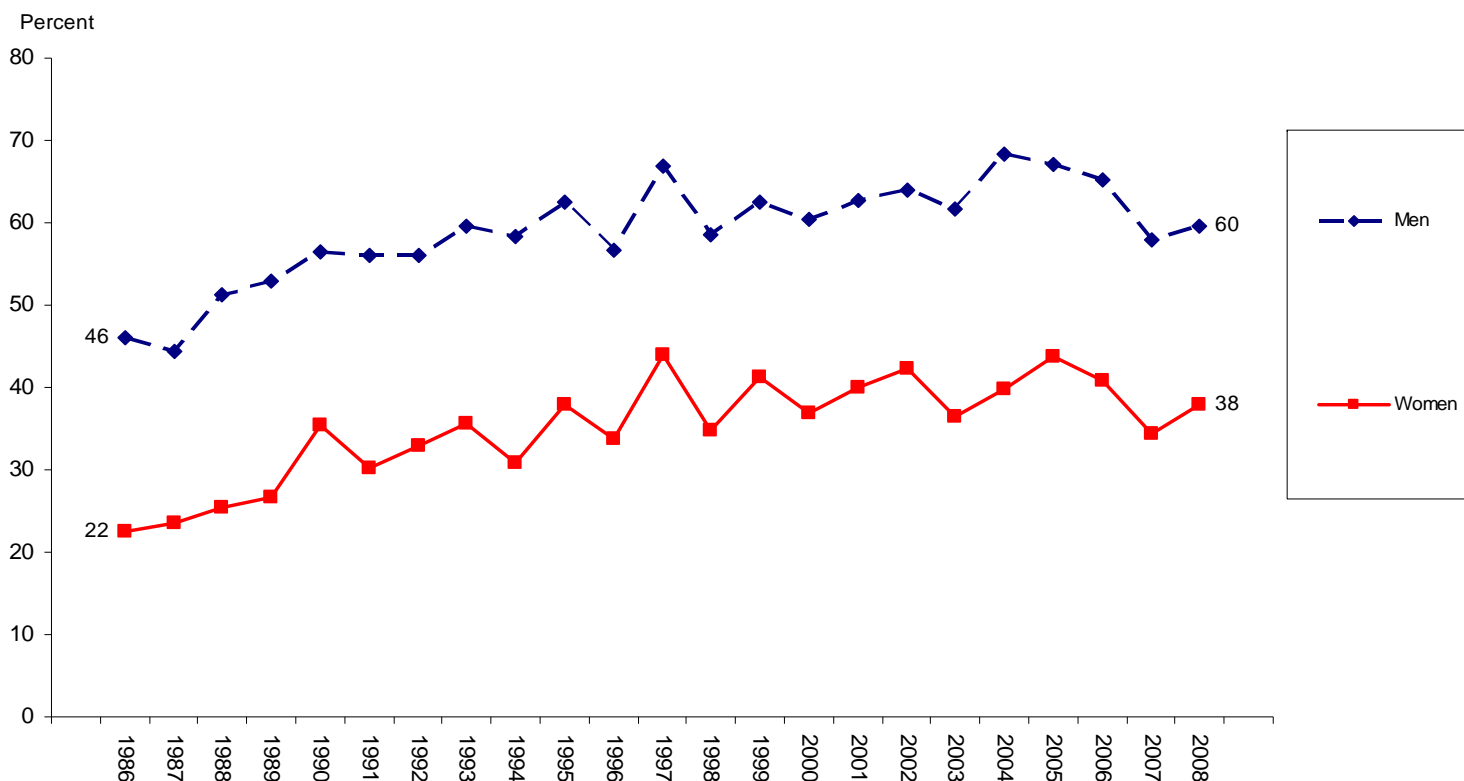


**Question:** “On a scale between 1 (small risk) and 10 (large risk) how would you assess the risk that Sweden can not manage and end store high-level nuclear waste in a secure way?”

**Comment:** The scale answers have been classified in three groups; 1-4 (small risk), 5-6 (neither small nor large risk), 7-10 (large risk). All respondents who answered the scale question are included in the percent calculations. The mean has a minimum of 1,0 and a maximum of 10,0.

**Source:** The SOM Institute, University of Gothenburg; Annual nationwide surveys in Sweden; sample size 3000 persons 16-85 years old; mail questionnaires with an average response rate around 60-65 percent. The report has been produced within the research project *Energy Opinion in Sweden* financially supported by *The Swedish Energy Authority*. Responsible for graph editing has been Rebecka Åsbrink.

## Percent Swedes Who Think That There is a Small Risk That Sweden Can Not Manage and End Store High-Level Nuclear Waste in a Secure Way Among Women and Men

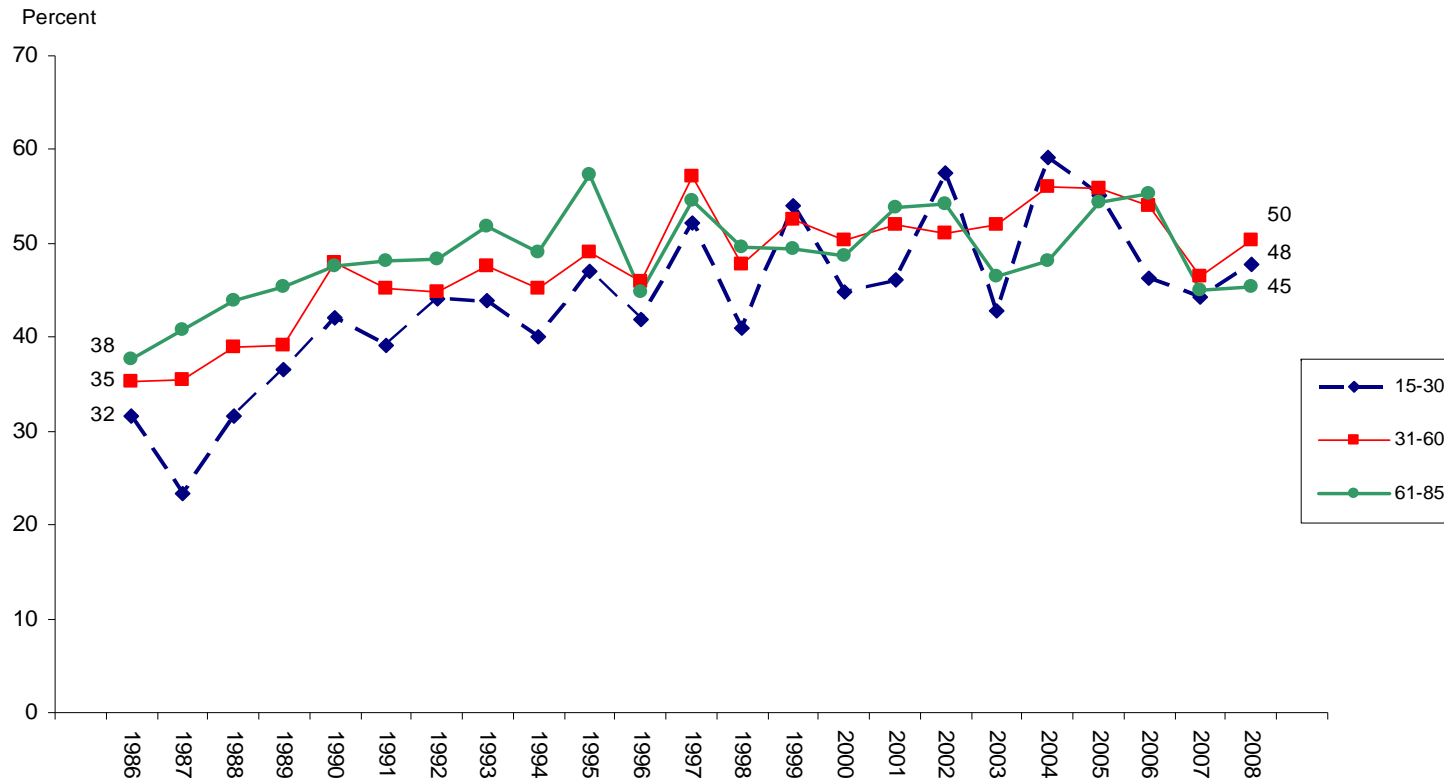


**Question:** “On a scale between 1 (small risk) and 10 (large risk) how would you assess the risk that Sweden can not manage and end store high-level nuclear waste in a secure way?”

**Comment:** The scale answers have been classified in three groups; 1-4 (small risk), 5-6 (neither small nor large risk), 7-10 (large risk). All respondents who answered the scale question are included in the percent calculations. The mean has a minimum of 1,0 and a maximum of 10,0.

**Source:** The SOM Institute, University of Gothenburg; Annual nationwide surveys in Sweden; sample size 3000 persons 16-85 years old; mail questionnaires with an average response rate around 60-65 percent. The report has been produced within the research project *Energy Opinion in Sweden* financially supported by *The Swedish Energy Authority*. Responsible for graph editing has been Rebecka Åsbrink.

## Percent Who Think That There is a Small Risk That Sweden Can Not Manage and End Store High-Level Nuclear Waste in a Secure Way Among Swedes in Different Age Groups

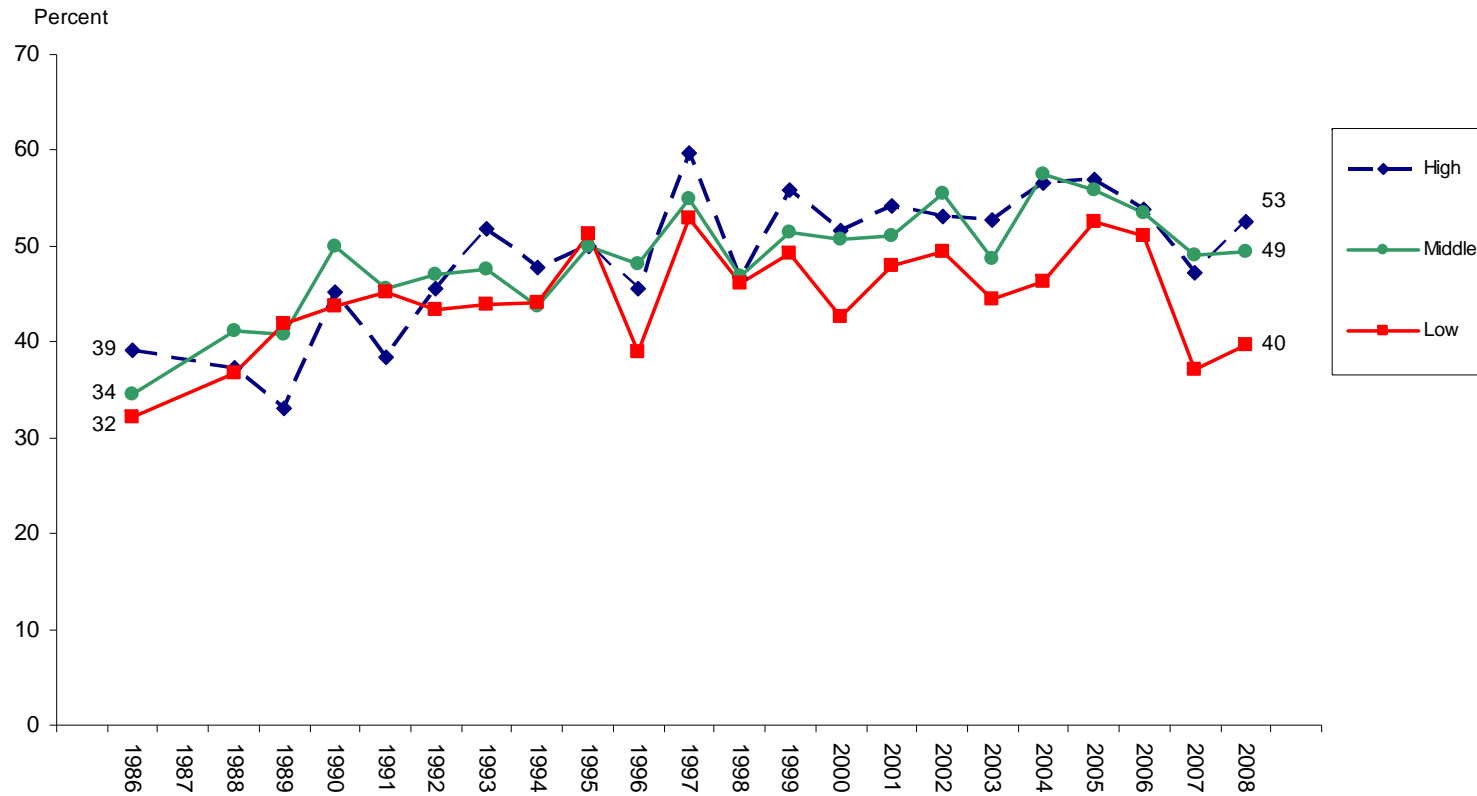


**Question:** “On a scale between 1 (small risk) and 10 (large risk) how would you assess the risk that Sweden can not manage and end store high-level nuclear waste in a secure way?”

**Comment:** The scale answers have been classified in three groups; 1-4 (small risk), 5-6 (neither small nor large risk), 7-10 (large risk). All respondents who answered the scale question are included in the percent calculations. The mean has a minimum of 1,0 and a maximum of 10,0.

**Source:** The SOM Institute, University of Gothenburg; Annual nationwide surveys in Sweden; sample size 3000 persons 16-85 years old; mail questionnaires with an average response rate around 60-65 percent. The report has been produced within the research project *Energy Opinion in Sweden* financially supported by *The Swedish Energy Authority*. Responsible for graph editing has been Rebecka Åsbrink.

## Percent Who Think That There is a Small Risk That Sweden Can Not Manage and End Store High-Level Nuclear Waste in a Secure Way Among Swedes in Different Educational Groups

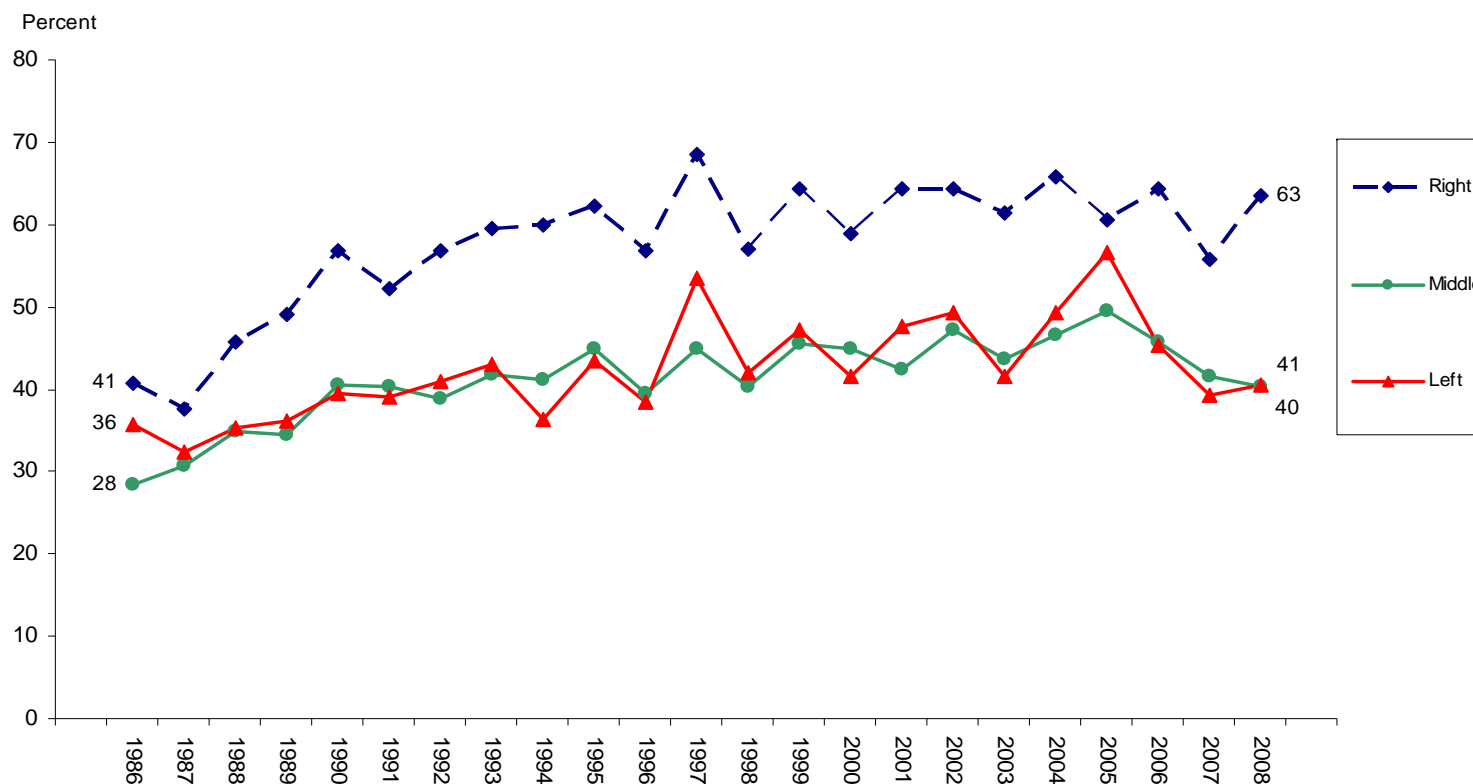


**Question:** “On a scale between 1 (small risk) and 10 (large risk) how would you assess the risk that Sweden can not manage and end store high-level nuclear waste in a secure way?”

**Comment:** The scale answers have been classified in three groups; 1-4 (small risk), 5-6 (neither small nor large risk), 7-10 (large risk). All respondents who answered the scale question are included in the percent calculations. The mean has a minimum of 1,0 and a maximum of 10,0.

**Source:** The SOM Institute, University of Gothenburg; Annual nationwide surveys in Sweden; sample size 3000 persons 16-85 years old; mail questionnaires with an average response rate around 60-65 percent. The report has been produced within the research project *Energy Opinion in Sweden* financially supported by *The Swedish Energy Authority*. Responsible for graph editing has been Rebecka Åsbrink.

## Percent Who Think That There is a Small Risk That Sweden Can Not Manage and End Store High-Level Nuclear Waste in a Secure Way Among Swedes with Different Ideological Self-Placements



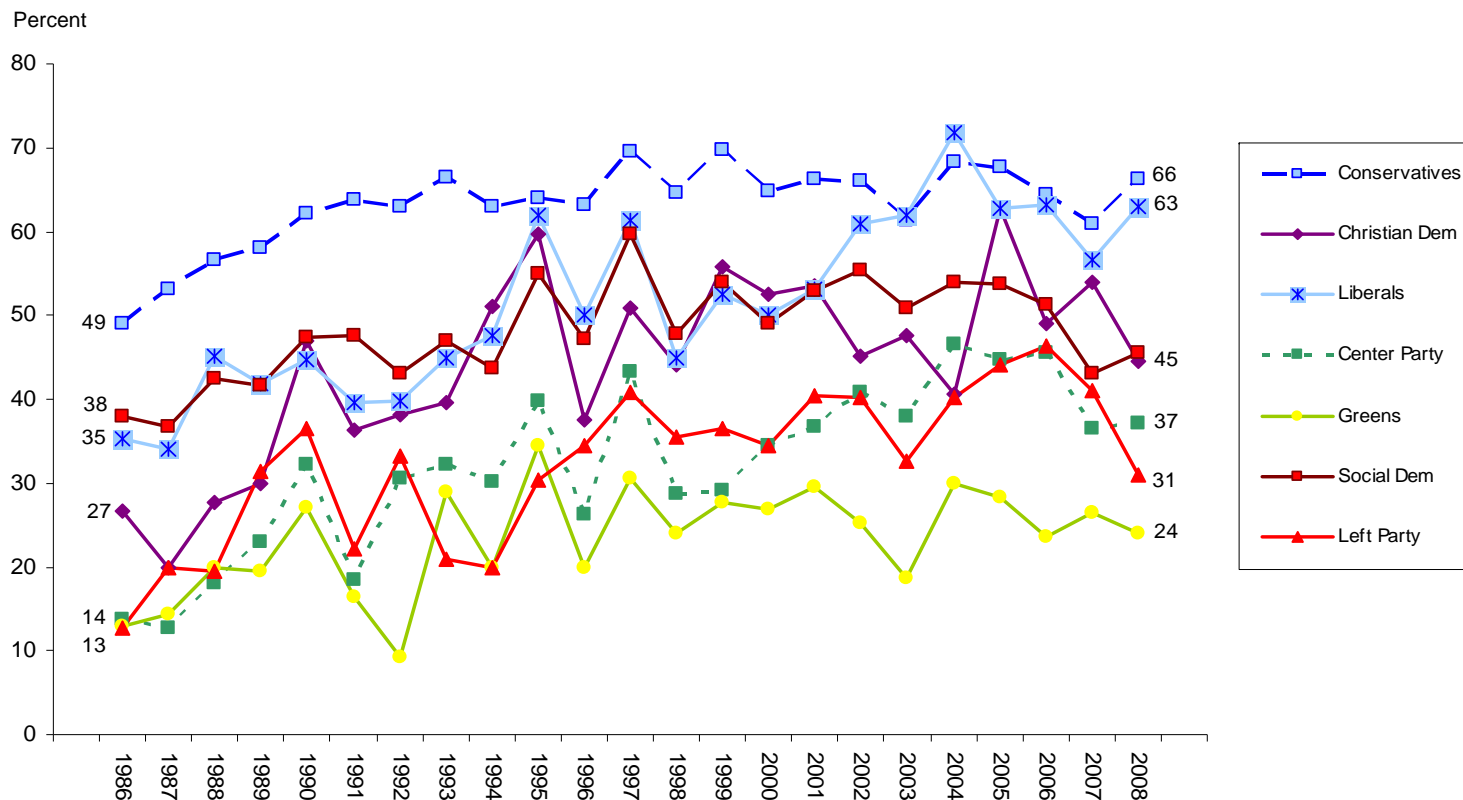
**Question:** “On a scale between 1 (small risk) and 10 (large risk) how would you assess the risk that Sweden can not manage and end store high-level nuclear waste in a secure way?”

**Comment:** The scale answers have been classified in three groups; 1-4 (small risk), 5-6 (neither small nor large risk), 7-10 (large risk). All respondents who answered the scale question are included in the percent calculations. The mean has a minimum of 1,0 and a maximum of 10,0.

**Source:** The SOM Institute, University of Gothenburg; Annual nationwide surveys in Sweden; sample size 3000 persons 16-85 years old; mail questionnaires with an average response rate around 60-65 percent. The report has been produced within the research project *Energy Opinion in Sweden* financially supported by *The Swedish Energy Authority*. Responsible for graph editing has been Rebecka Åsbrink.



## Percent Who Think That There is a Small Risk That Sweden Can Not Manage and End Store High-Level Nuclear Waste in a Secure Way Among Swedes with Different Party Sympathies

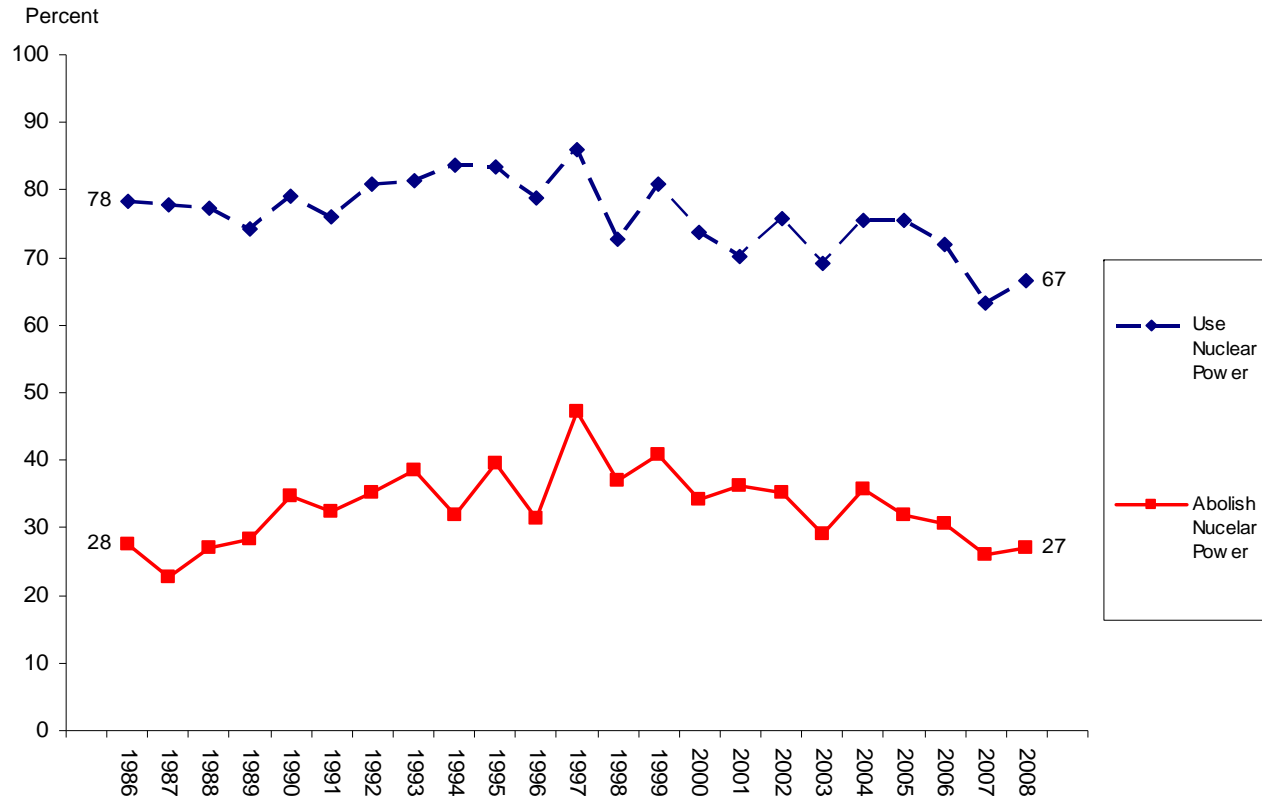


**Question:** “On a scale between 1 (small risk) and 10 (large risk) how would you assess the risk that Sweden can not manage and end store high-level nuclear waste in a secure way?”

**Comment:** The scale answers have been classified in three groups; 1-4 (small risk), 5-6 (neither small nor large risk), 7-10 (large risk). All respondents who answered the scale question are included in the percent calculations. The mean has a minimum of 1,0 and a maximum of 10,0. The results for New Democracy were 37 percent in 1991, 49 percent in 1992, 49 percent in 1993 and 59 percent in 1994. For Sweden Democracy the results were 81 percent in 2006, 39 percent in 2007 and 61 percent in 2008.

**Source:** The SOM Institute, University of Gothenburg; Annual nationwide surveys in Sweden; sample size 3000 persons 16-85 years old; mail questionnaires with an average response rate around 60-65 percent. The report has been produced within the research project *Energy Opinion in Sweden* financially supported by *The Swedish Energy Authority*. Responsible for graph editing has been Rebecka Åsbrink.

**Percent Who Think That There is a Small Risk That Sweden Can Not Manage and End Store High-Level Nuclear Waste in a Secure Way Among Swedes with Different Opinions on the Long-Term Use of Nuclear Power in Sweden**



**Question:** “On a scale between 1 (small risk) and 10 (large risk) how would you assess the risk that Sweden can not manage and end store high-level nuclear waste in a secure way?”

**Comment:** The scale answers have been classified in three groups; 1-4 (small risk), 5-6 (neither small nor large risk), 7-10 (large risk). All respondents who answered the scale question are included in the percent calculations. The mean has a minimum of 1,0 and a maximum of 10,0.

**Source:** The SOM Institute, University of Gothenburg; Annual nationwide surveys in Sweden; sample size 3000 persons 16-85 years old; mail questionnaires with an average response rate around 60-65 percent. The report has been produced within the research project *Energy Opinion in Sweden* financially supported by *The Swedish Energy Authority*. Responsible for graph editing has been Rebecka Åsbrink.