

SOM report 2008:5

# S O M

Swedish Opinion  
on the  
Swedish Membership  
in the  
European Union  
1994—2007

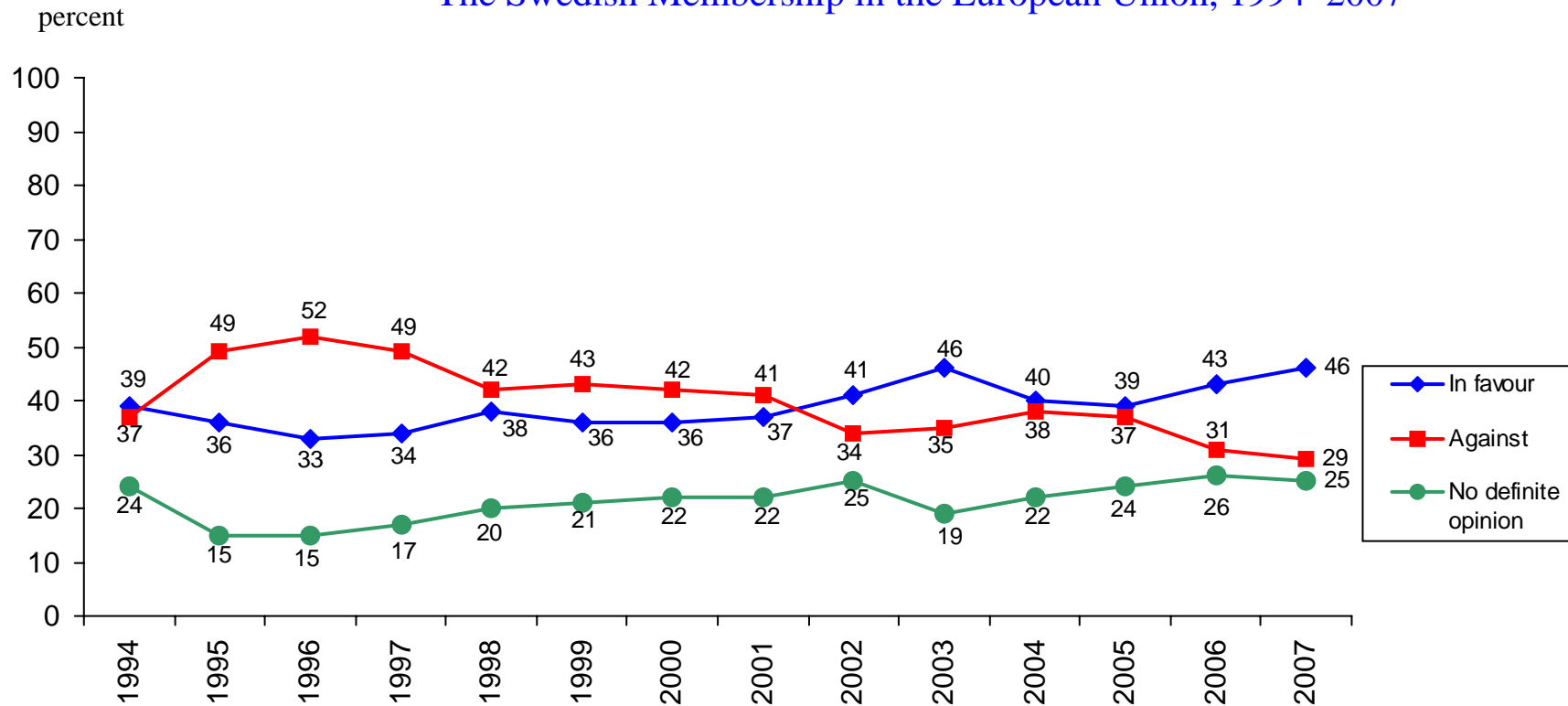
Sören Holmberg

**SOM INSTITUTE**  
*society opinion media*

society opinion media society opinion media



## The Swedish Membership in the European Union, 1994–2007

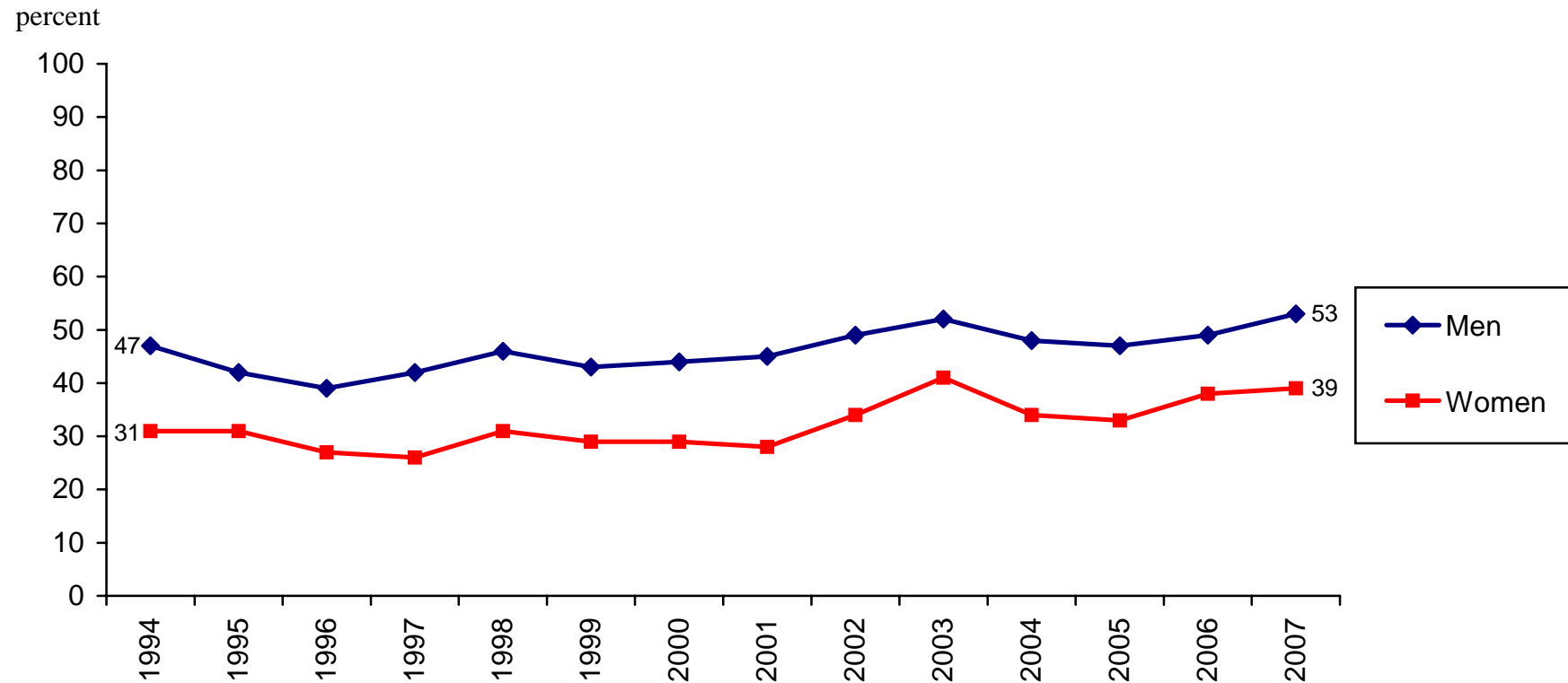


**Data:** The SOM Institute, University of Gothenburg; Annual nationwide surveys in Sweden; Sample size: 6 000; age: 15–85 years old; Mail questionnaires with an average response rate of 65 percent. **Question:** "What is your opinion of the Swedish membership in the European Union?" Three response alternatives: "On the whole in favour; On the whole against; No definite opinion."

**Comment:** All respondents answering the question are included in the percentage base.

**Principal investigator:** Sören Holmberg, phone +46 31 786 12 27, e-mail: [soren.holmberg@pol.gu.se](mailto:soren.holmberg@pol.gu.se). Data processed by Rudolf Antoni and Jonas Ohlsson, the SOM Institute.

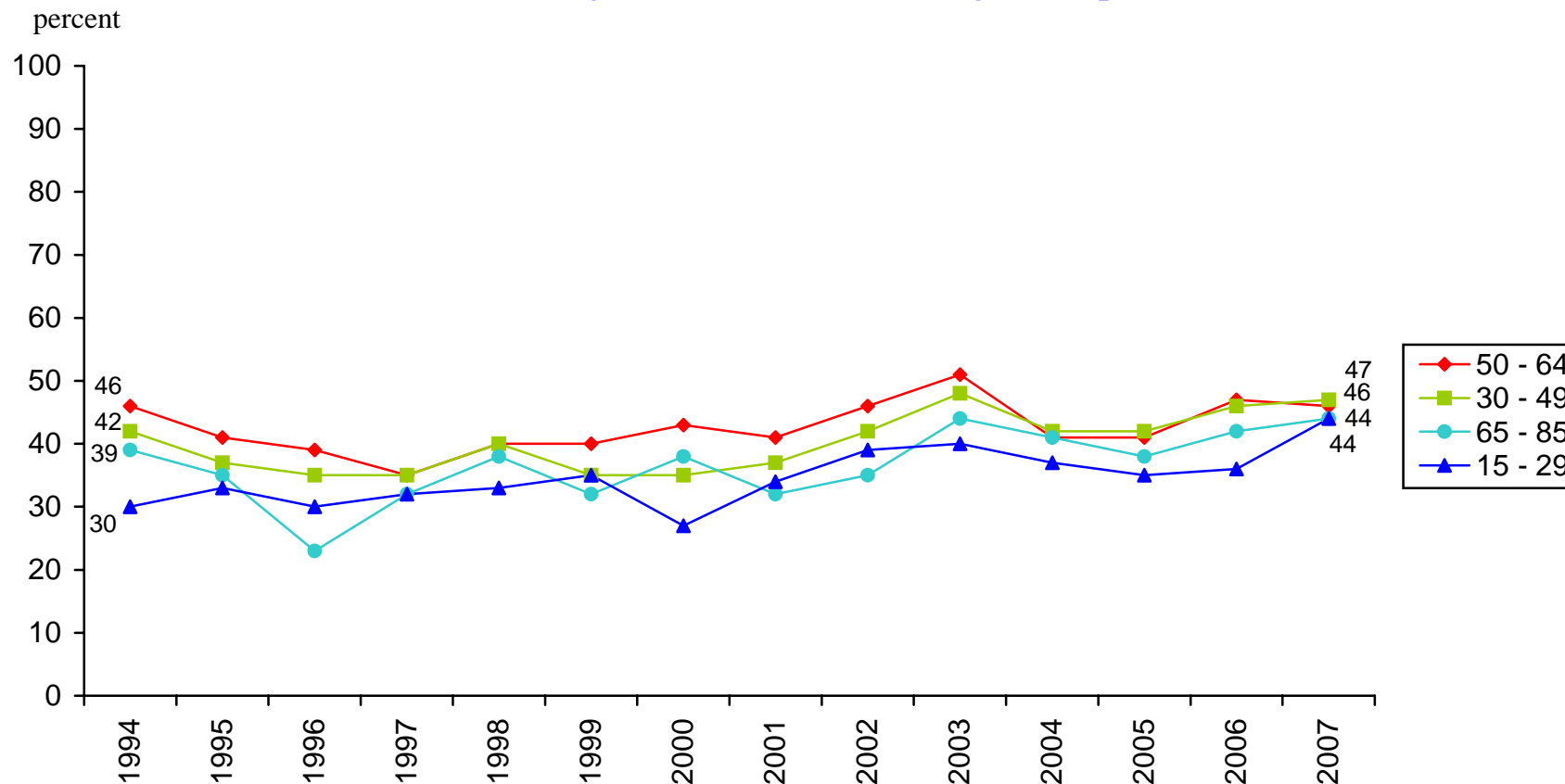
## Percent in Favour of the Swedish Membership in the European Union Among Women and Men, 1994–2007



**Data:** The annual nationwide SOM survey, the SOM Institute, University of Gothenburg, Sweden.

**Principal investigator:** Sören Holmberg, phone +46 31 786 12 27, e-mail: [soren.holmberg@pol.gu.se](mailto:soren.holmberg@pol.gu.se). Data processed by Rudolf Antoni and Jonas Ohlsson, the SOM Institute.

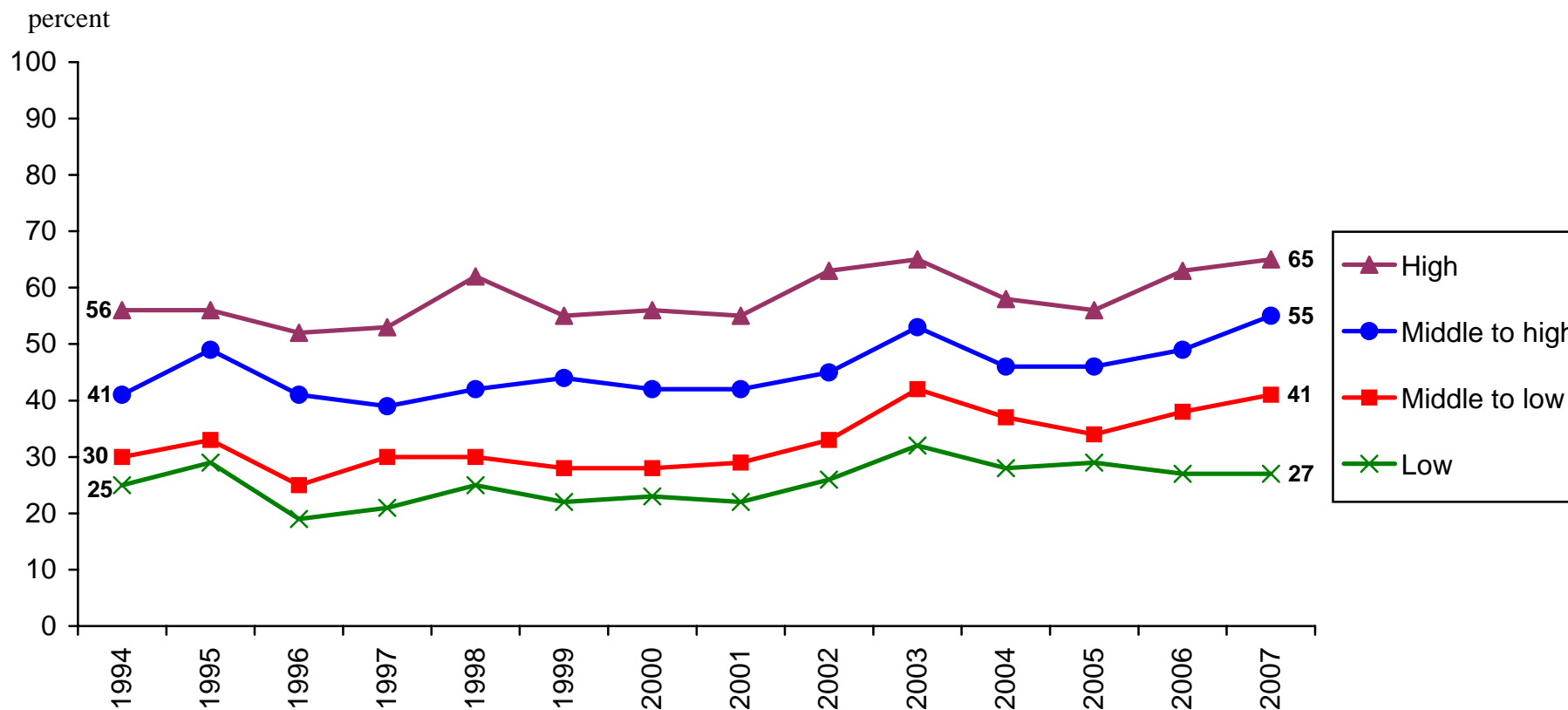
## Percent in Favour of the Swedish Membership in the European Union Among Swedes in Different Age Groups, 1994–2007



**Data:** The annual nationwide SOM survey, the SOM Institute, University of Gothenburg, Sweden.

**Principal investigator:** Sören Holmberg, phone +46 31 786 12 27, e-mail: [soren.holmberg@pol.gu.se](mailto:soren.holmberg@pol.gu.se). Data processed by Rudolf Antoni and Jonas Ohlsson, the SOM Institute.

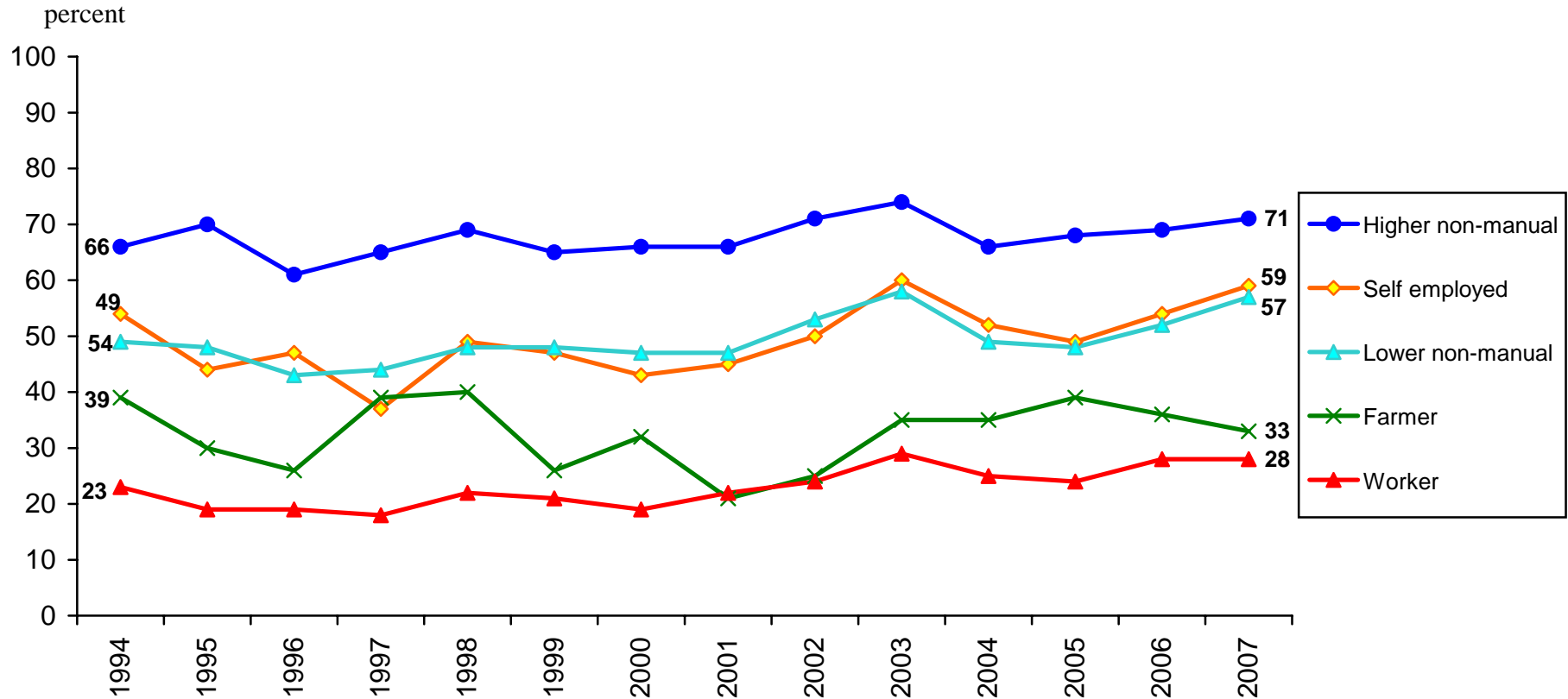
## Percent in Favour of the Swedish Membership in the European Union Among Swedes in Different Educational Groups, 1994–2007



**Data:** The annual nationwide SOM survey, the SOM Institute, University of Gothenburg, Sweden.

**Principal investigator:** Sören Holmberg, phone +46 31 786 12 27, e-mail: [soren.holmberg@pol.gu.se](mailto:soren.holmberg@pol.gu.se). Data processed by Rudolf Antoni and Jonas Ohlsson, the SOM Institute.

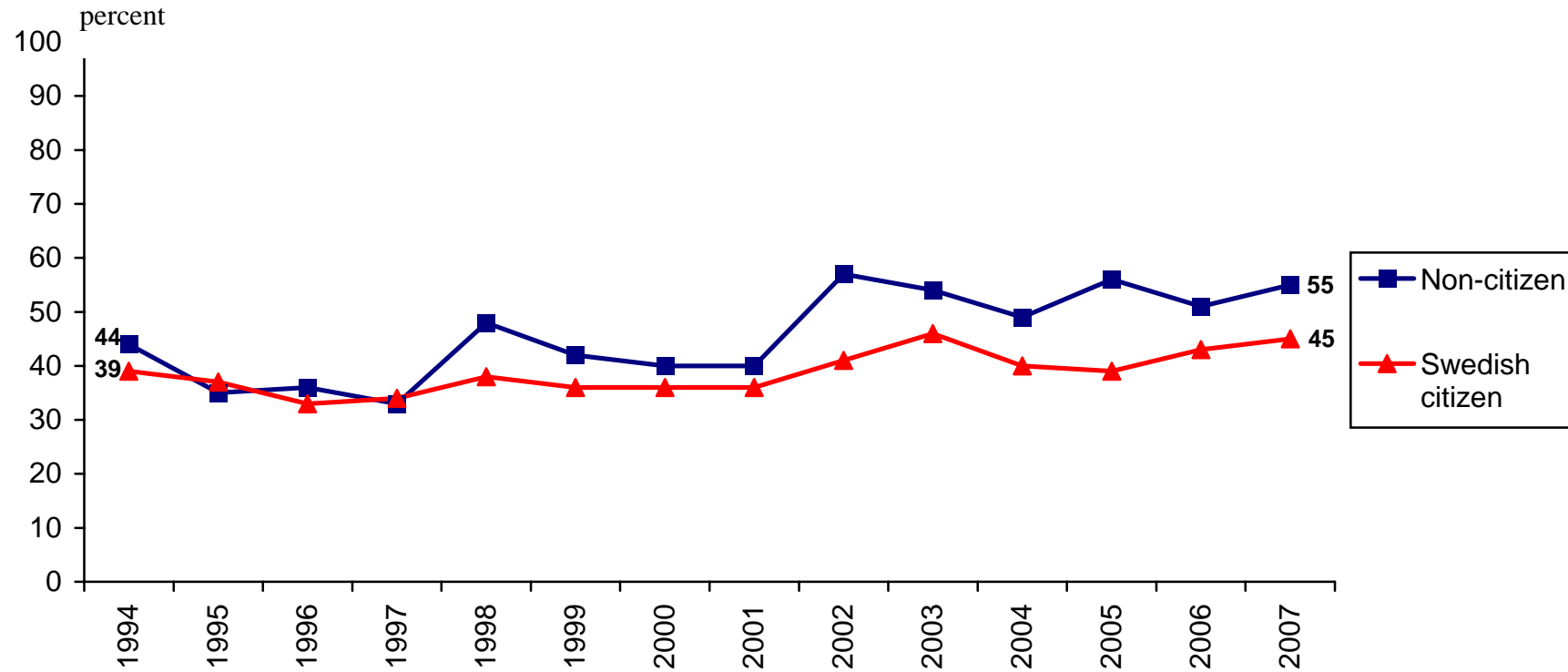
## Percent in Favour of the Swedish Membership in the European Union Among Swedes in Different Subjective Family Classes, 1994–2007



**Data:** The annual nationwide SOM survey, the SOM Institute, University of Gothenburg, Sweden.

**Principal investigator:** Sören Holmberg, phone +46 31 786 12 27, e-mail: [soren.holmberg@pol.gu.se](mailto:soren.holmberg@pol.gu.se). Data processed by Rudolf Antoni and Jonas Ohlsson, the SOM Institute.

## Percent in Favour of the Swedish Membership in the European Union Among Citizens and Non-Citizens, 1994–2007

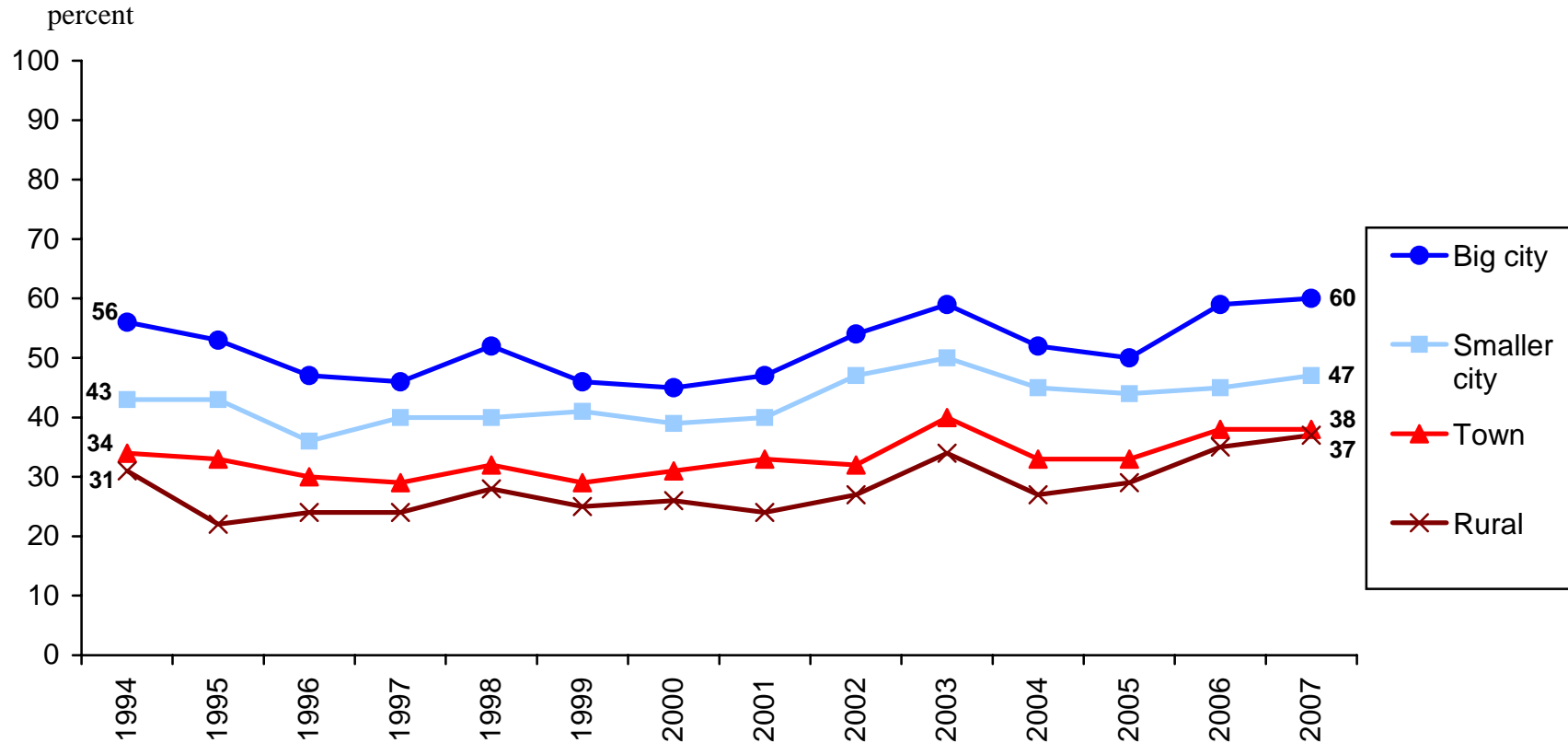


*Data:* The annual nationwide SOM survey, the SOM Institute, University of Gothenburg, Sweden.

*Principal investigator:* Sören Holmberg, phone +46 31 786 12 27, e-mail: [soren.holmberg@pol.gu.se](mailto:soren.holmberg@pol.gu.se). Data processed by Rudolf Antoni and Jonas Ohlsson, the SOM Institute.



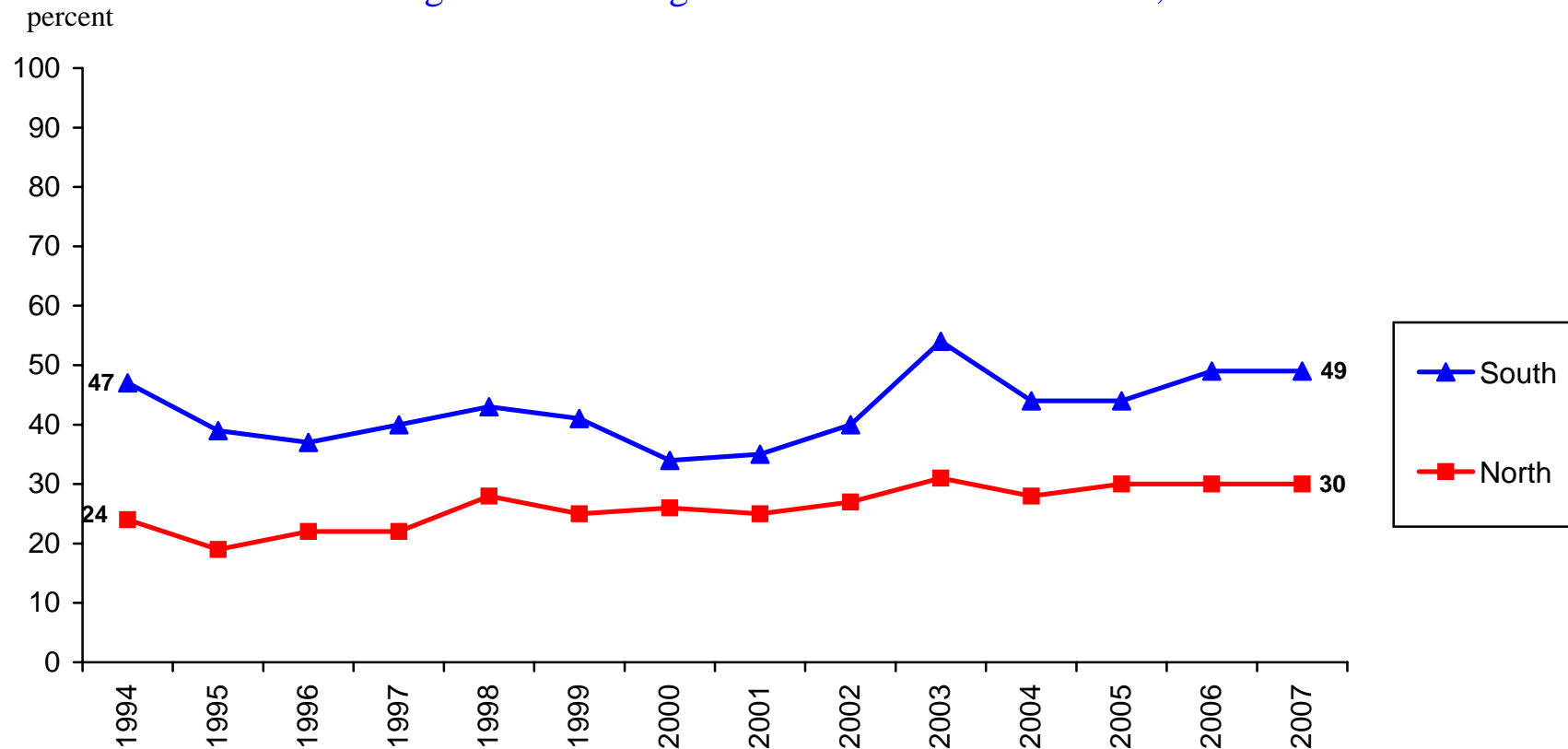
## Percent in Favour of the Swedish Membership in the European Union Among Swedes Living in Different Types of Areas, 1994–2007



*Data:* The annual nationwide SOM survey, the SOM Institute, University of Gothenburg, Sweden.

*Principal investigator:* Sören Holmberg, phone +46 31 786 12 27, e-mail: [soren.holmberg@pol.gu.se](mailto:soren.holmberg@pol.gu.se). Data processed by Rudolf Antoni and Jonas Ohlsson, the SOM Institute.

## Percent in Favour of the Swedish Membership in the European Union Among Swedes Living in the North and in the South, 1994–2007

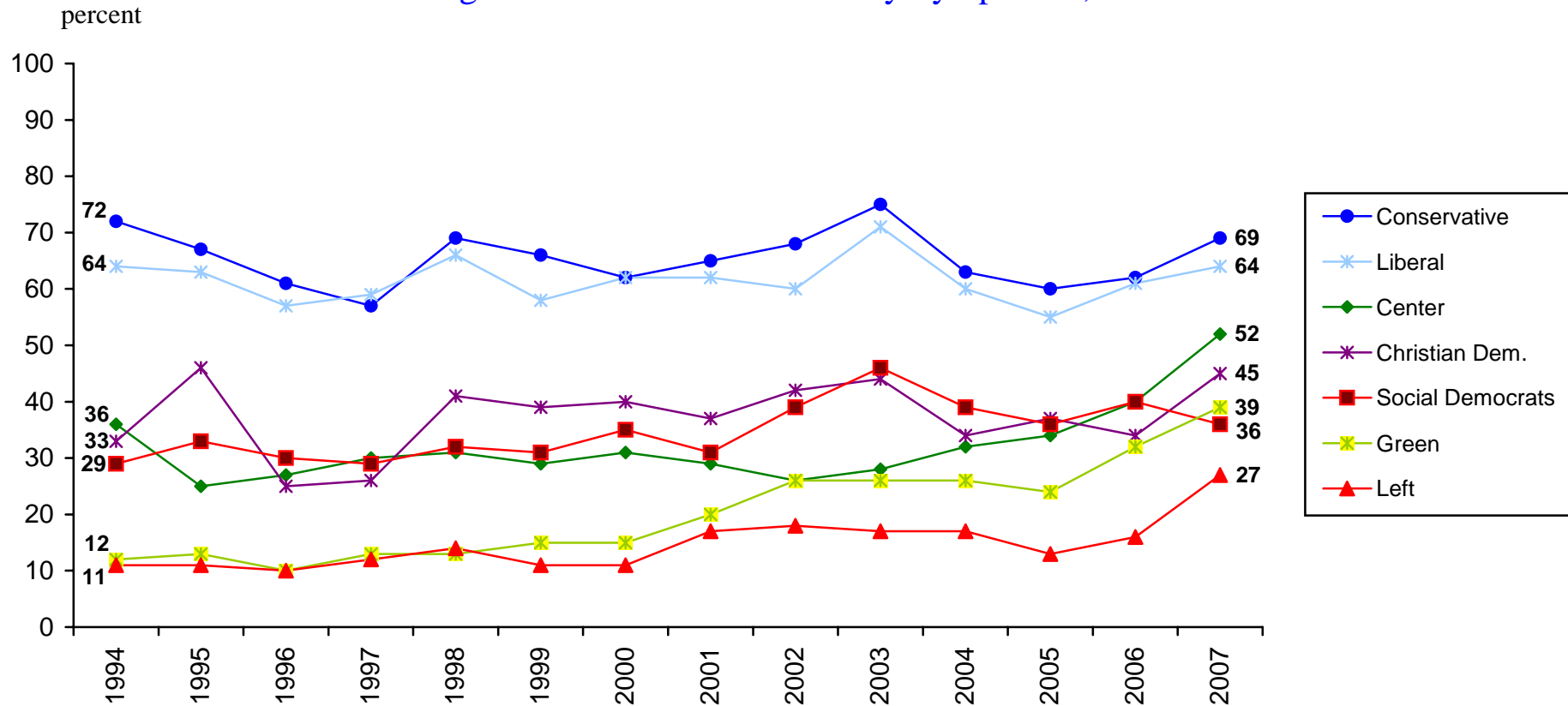


**Comment:** The South is defined as *Southern Sweden (Skåne and Blekinge)* and the North is defined as *Upper Norrland*.

**Data:** The annual nationwide SOM survey, the SOM Institute, University of Gothenburg, Sweden.

**Principal investigator:** Sören Holmberg, phone +46 31 786 12 27, e-mail: [soren.holmberg@pol.gu.se](mailto:soren.holmberg@pol.gu.se). Data processed by Rudolf Antoni and Jonas Ohlsson, the SOM Institute.

## Percent in Favour of the Swedish Membership in the European Union Among Swedes with Different Party Sympathies, 1994–2007

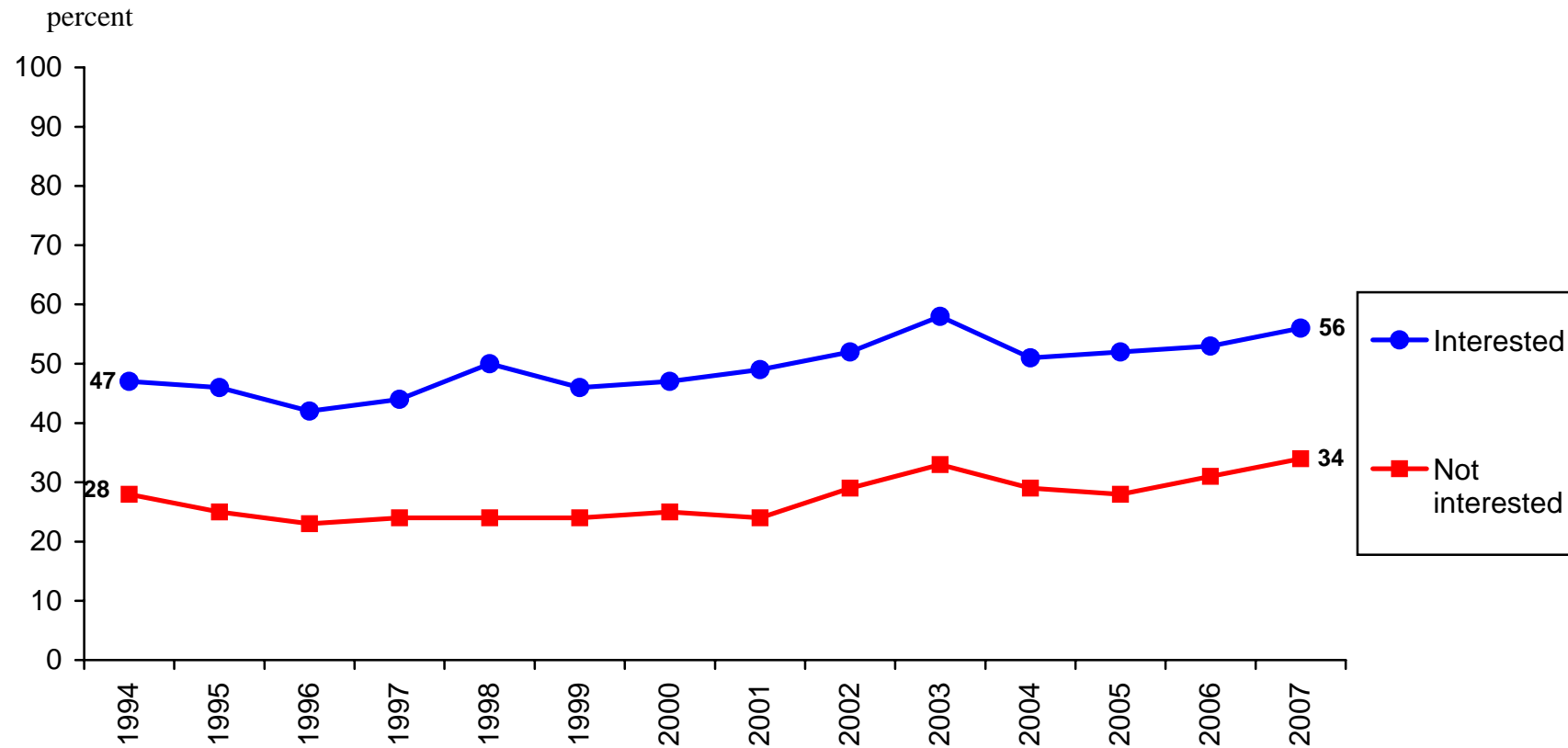


**Comment:** The percentage for the Sweden Democrats was 18 in 2006 and 14 in 2007.

**Data:** The annual nationwide SOM survey, the SOM Institute, University of Gothenburg, Sweden.

**Principal investigator:** Sören Holmberg, phone +46 31 786 12 27, e-mail: [soren.holmberg@pol.gu.se](mailto:soren.holmberg@pol.gu.se). Data processed by Rudolf Antoni and Jonas Ohlsson, the SOM Institute.

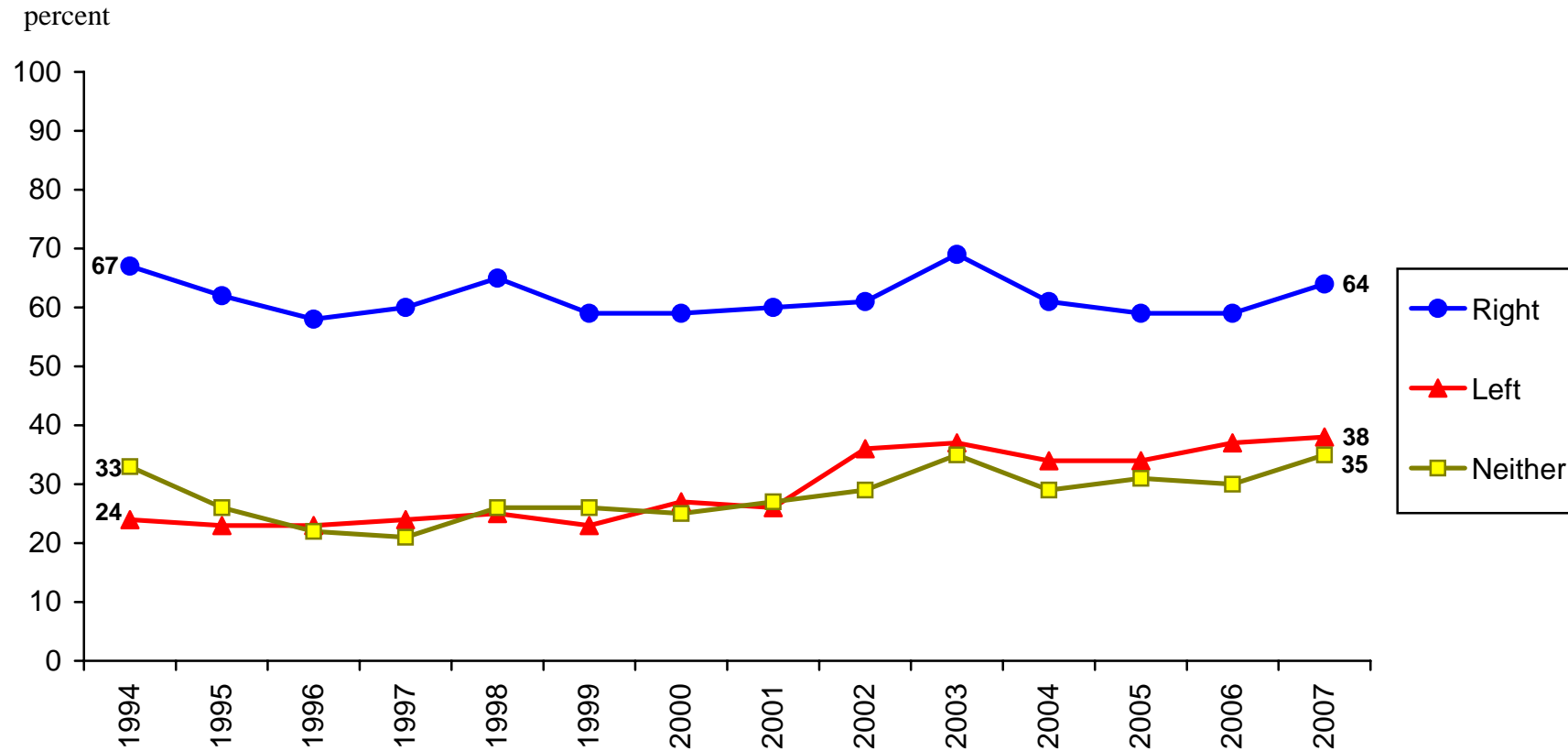
## Percent in Favour of the Swedish Membership in the European Union Among Swedes with Different Degrees of Political Interest, 1994–2007



**Data:** The annual nationwide SOM survey, the SOM Institute, University of Gothenburg, Sweden.

**Principal investigator:** Sören Holmberg, phone +46 31 786 12 27, e-mail: [soren.holmberg@pol.gu.se](mailto:soren.holmberg@pol.gu.se). Data processed by Rudolf Antoni and Jonas Ohlsson, the SOM Institute.

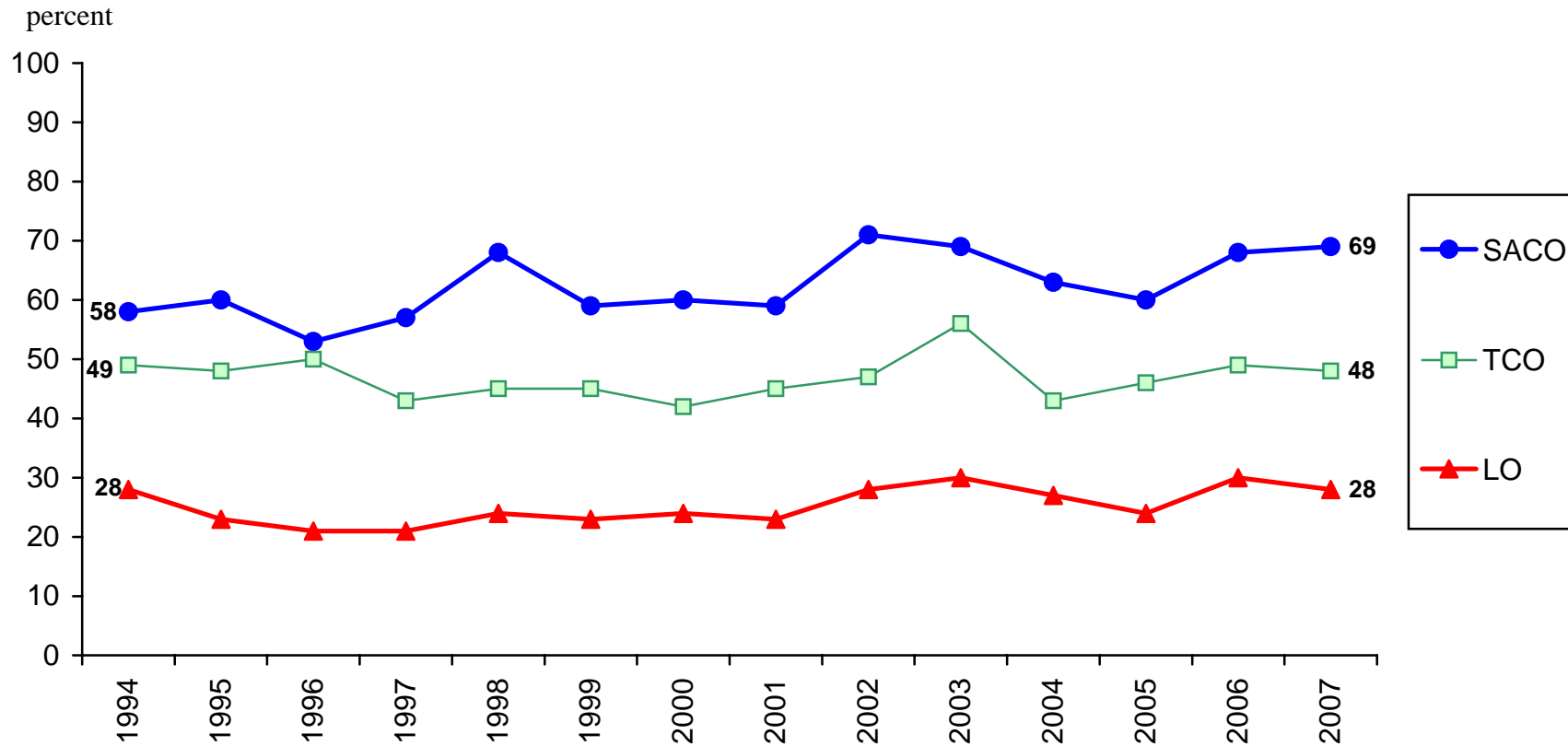
## Percent in Favour of the Swedish Membership in the European Union Among Swedes with Different Ideological Self-Placements, 1994–2007



**Data:** The annual nationwide SOM survey, the SOM Institute, University of Gothenburg, Sweden.

**Principal investigator:** Sören Holmberg, phone +46 31 786 12 27, e-mail: [soren.holmberg@pol.gu.se](mailto:soren.holmberg@pol.gu.se). Data processed by Rudolf Antoni and Jonas Ohlsson, the SOM Institute

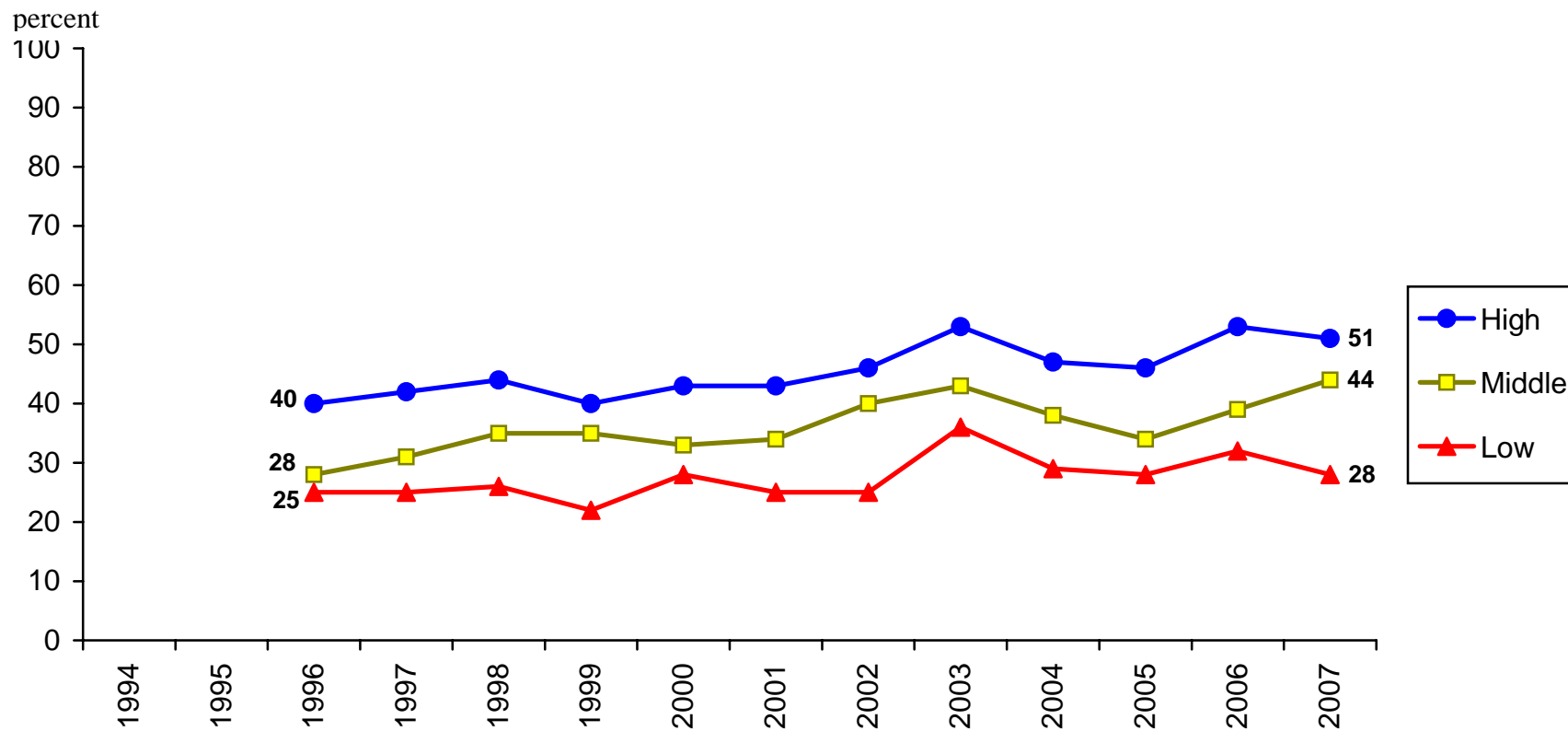
## Percent in Favour of the Swedish Membership in the European Union Among Members of Different Trade Unions, 1994–2007



**Data:** The annual nationwide SOM survey, the SOM Institute, University of Gothenburg, Sweden.

**Principal investigator:** Sören Holmberg, phone +46 31 786 12 27, e-mail: [soren.holmberg@pol.gu.se](mailto:soren.holmberg@pol.gu.se). Data processed by Rudolf Antoni and Jonas Ohlsson, the SOM Institute.

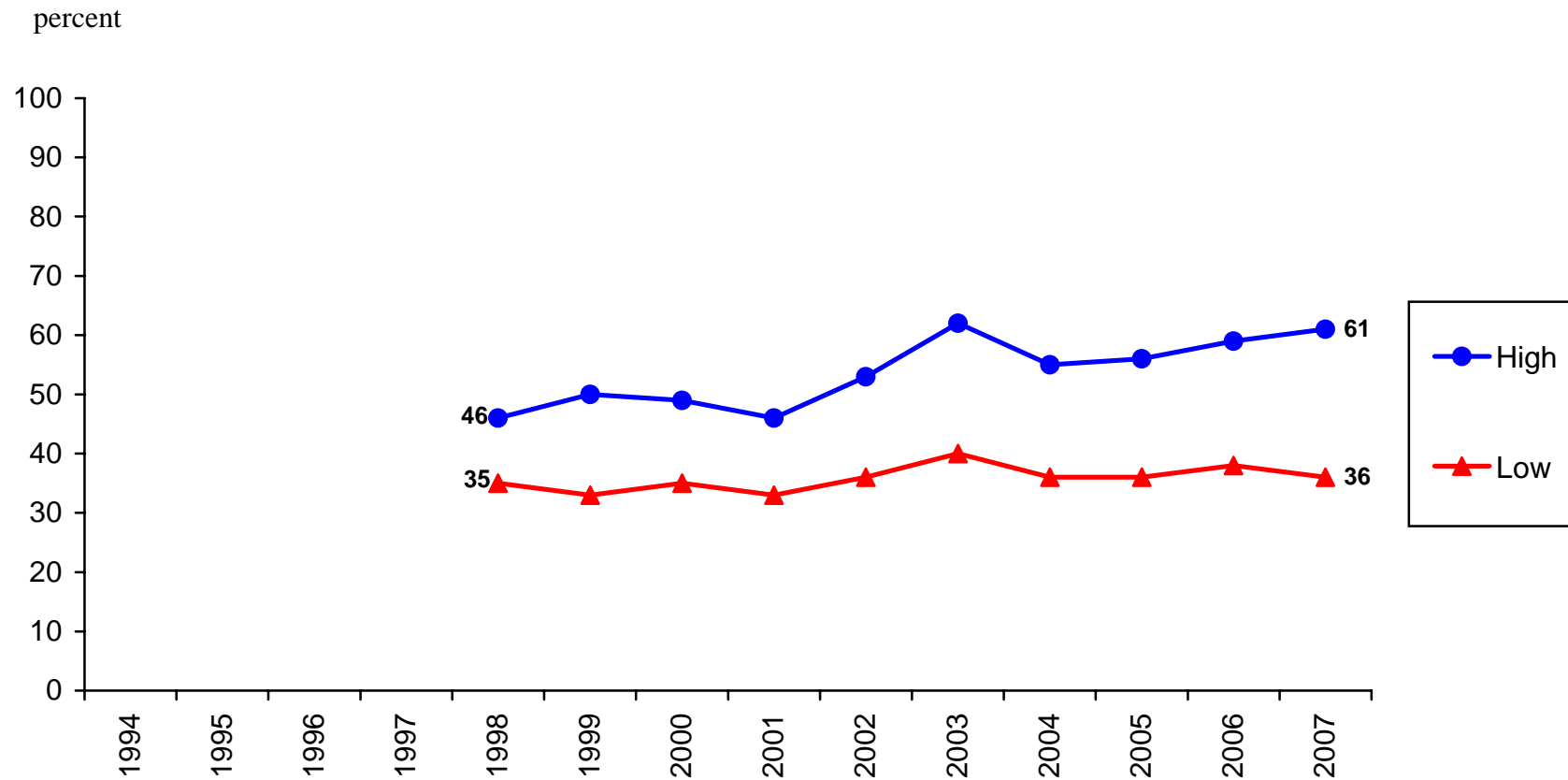
Percent in Favour of the Swedish Membership in the European Union  
Among Swedes with Different Degrees of General Trust in Other People, 1996–2007



**Data:** The annual nationwide SOM survey, the SOM Institute, University of Gothenburg, Sweden.

**Principal investigator:** Sören Holmberg, phone +46 31 786 12 27, e-mail: [soren.holmberg@pol.gu.se](mailto:soren.holmberg@pol.gu.se). Data processed by Rudolf Antoni and Jonas Ohlsson, the SOM Institute.

## Percent in Favour of the Swedish Membership in the European Union Among Swedes with Different Degrees of General Trust in Politicians, 1996–2007

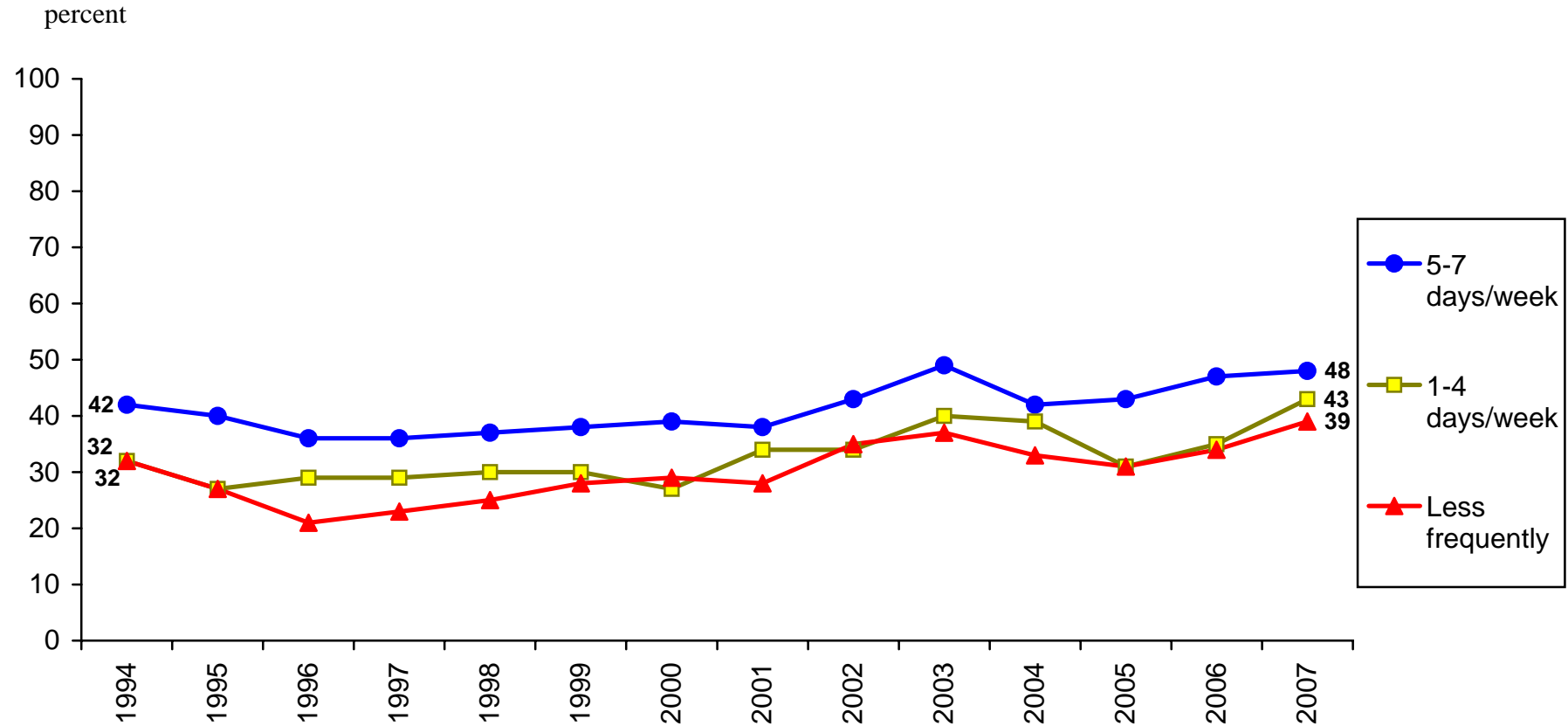


**Data:** The annual nationwide SOM survey, the SOM Institute, University of Gothenburg, Sweden.

**Principal investigator:** Sören Holmberg, phone +46 31 786 12 27, e-mail: [soren.holmberg@pol.gu.se](mailto:soren.holmberg@pol.gu.se). Data processed by Rudolf Antoni and Jonas Ohlsson, the SOM Institute.



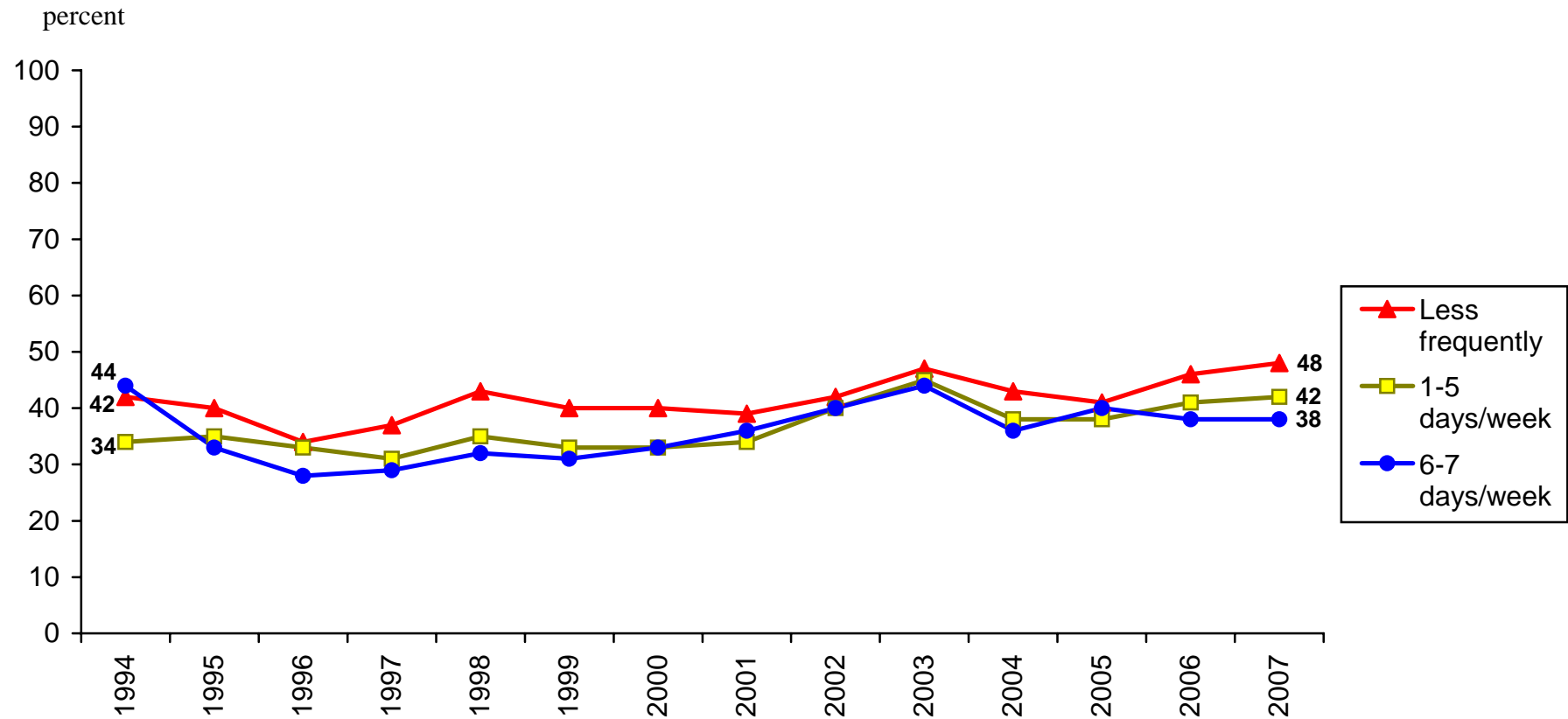
## Percent in Favour of the Swedish Membership in the European Union Among Morning Paper Readers, 1994–2007



**Data:** The annual nationwide SOM survey, the SOM Institute, University of Gothenburg, Sweden.

**Principal investigator:** Sören Holmberg, phone +46 31 786 12 27, e-mail: [soren.holmberg@pol.gu.se](mailto:soren.holmberg@pol.gu.se). Data processed by Rudolf Antoni and Jonas Ohlsson, the SOM Institute.

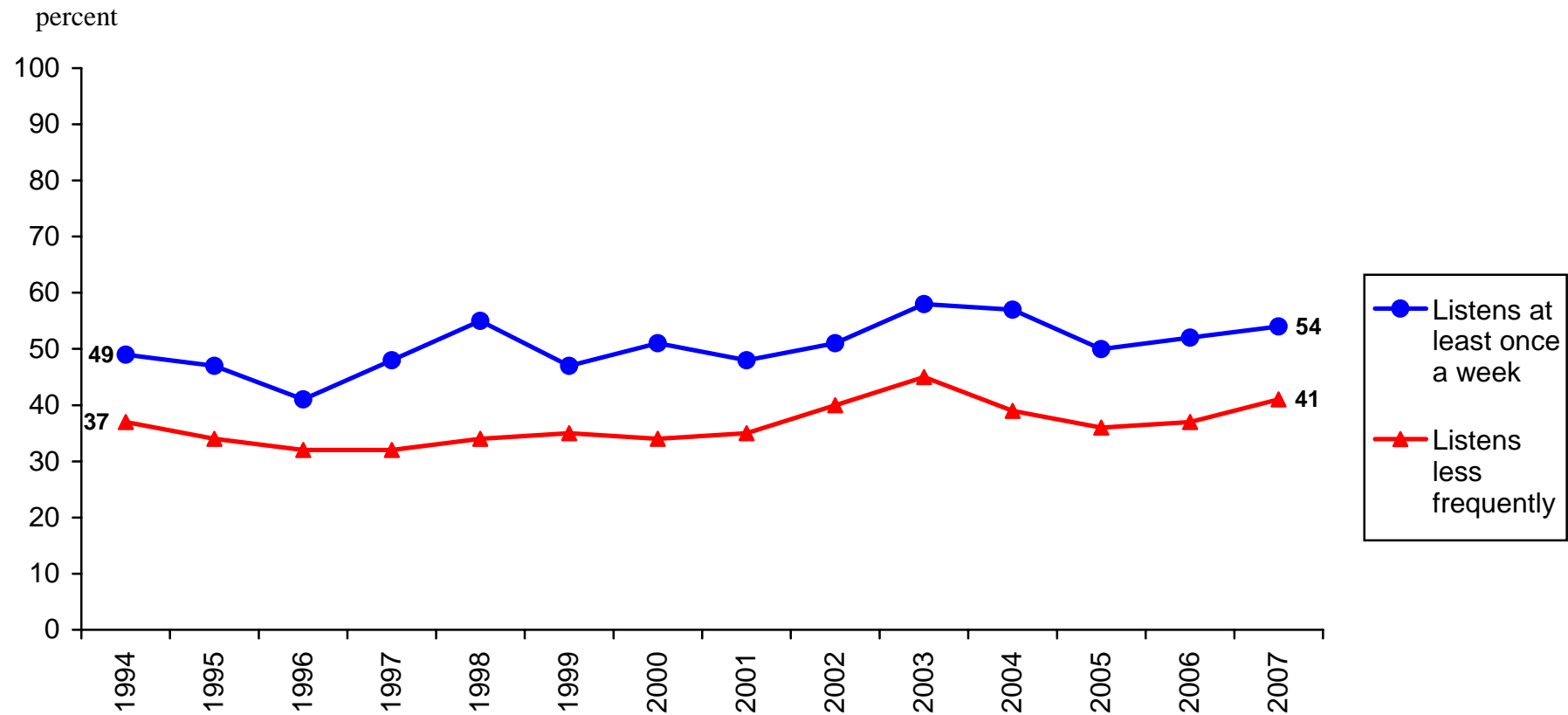
## Percent in Favour of the Swedish Membership in the European Union Among Evening Paper Readers, 1994–2007



**Data:** The annual nationwide SOM survey, the SOM Institute, University of Gothenburg, Sweden.

**Principal investigator:** Sören Holmberg, phone +46 31 786 12 27, e-mail: [soren.holmberg@pol.gu.se](mailto:soren.holmberg@pol.gu.se). Data processed by Rudolf Antoni and Jonas Ohlsson, the SOM Institute.

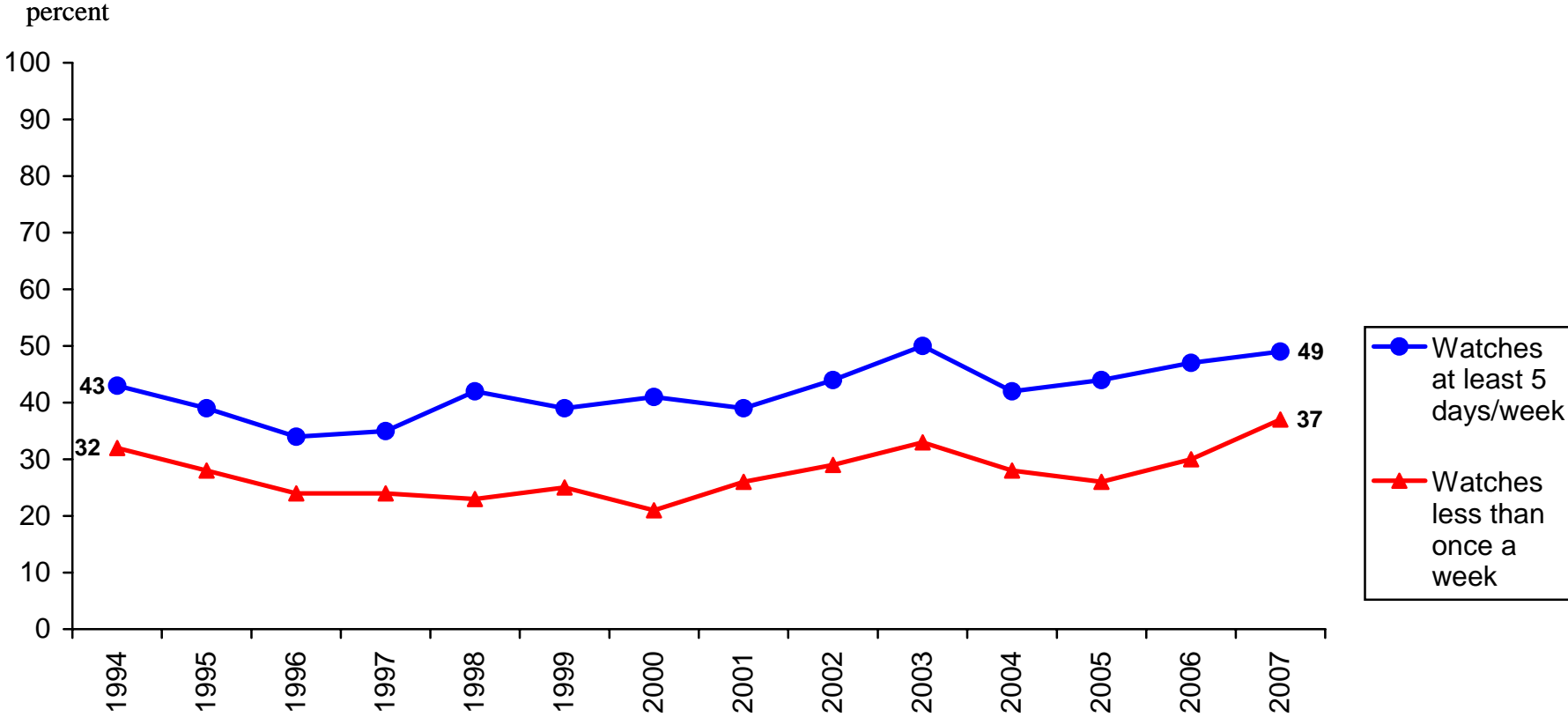
## Percent in Favour of the Swedish Membership in the European Union Among Listeners to Public Service Radio News (“Ekot”), 1994–2007



**Data:** The annual nationwide SOM survey, the SOM Institute, University of Gothenburg, Sweden.

**Principal investigator:** Sören Holmberg, phone +46 31 786 12 27, e-mail: [soren.holmberg@pol.gu.se](mailto:soren.holmberg@pol.gu.se). Data processed by Rudolf Antoni and Jonas Ohlsson, the SOM Institute.

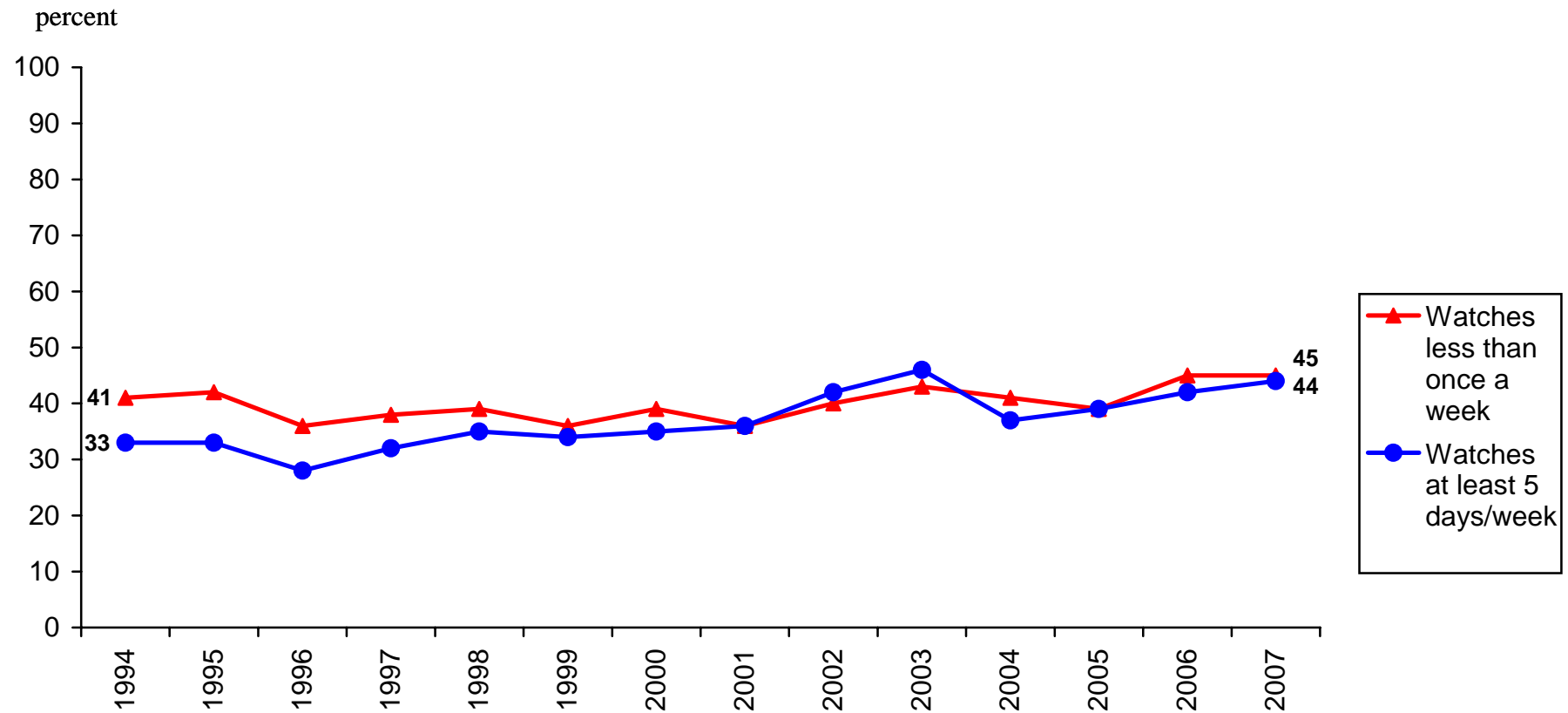
### Percent in Favour of the Swedish Membership in the European Union Among Viewers of Public Service Television News (SVT), 1994–2007



**Data:** The annual nationwide SOM survey, the SOM Institute, University of Gothenburg, Sweden.

**Principal investigator:** Sören Holmberg, phone +46 31 786 12 27, e-mail: [soren.holmberg@pol.gu.se](mailto:soren.holmberg@pol.gu.se). Data processed by Rudolf Antoni and Jonas Ohlsson, the SOM Institute.

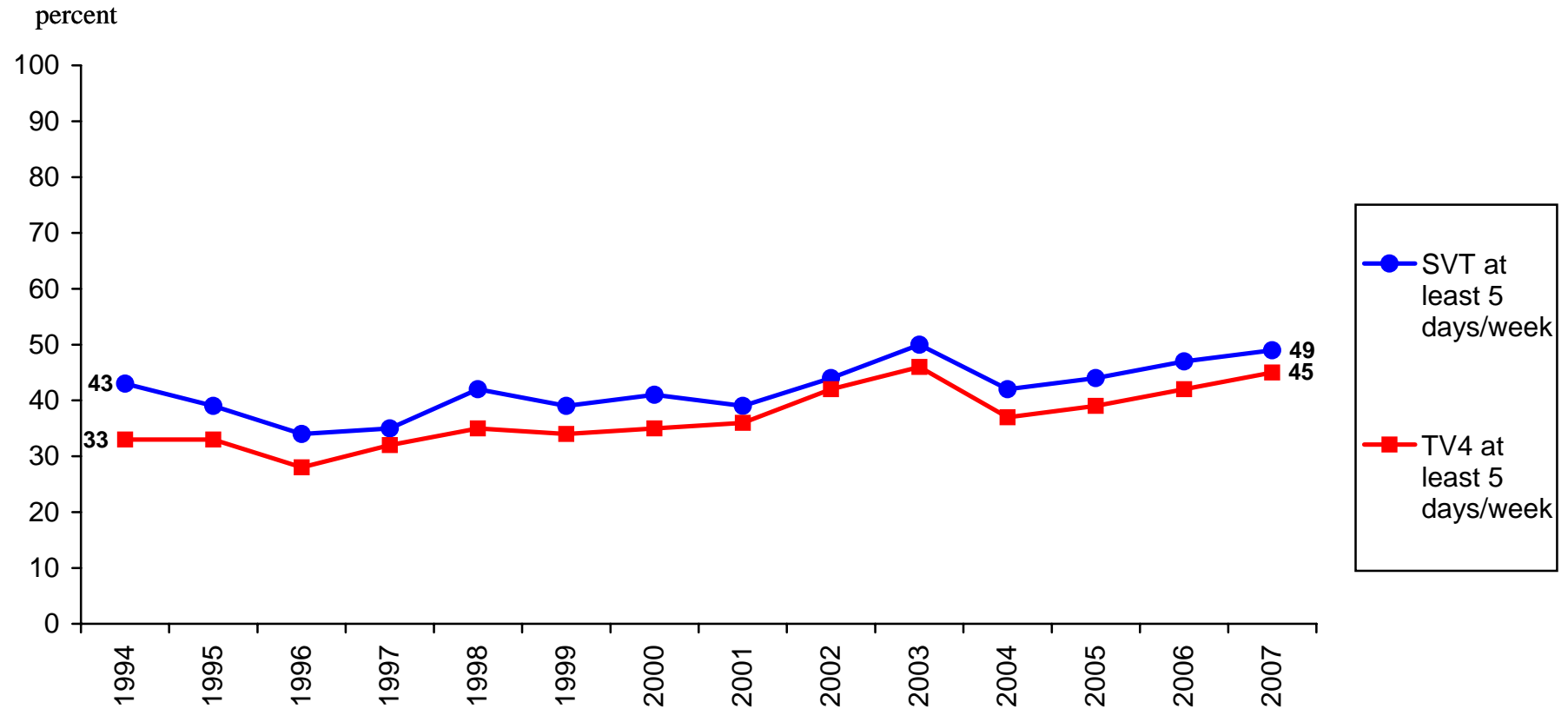
## Percent in Favour of the Swedish Membership in the European Union Among Viewers of Commercial Television News (TV4), 1994–2007



**Data:** The annual nationwide SOM survey, the SOM Institute, University of Gothenburg, Sweden.

**Principal investigator:** Sören Holmberg, phone +46 31 786 12 27, e-mail: [soren.holmberg@pol.gu.se](mailto:soren.holmberg@pol.gu.se). Data processed by Rudolf Antoni and Jonas Ohlsson, the SOM Institute.

## Percent in Favour of the Swedish Membership in the European Union Among Viewers of Television News on SVT and TV4, 1994–2007



**Data:** The annual nationwide SOM survey, the SOM Institute, University of Gothenburg, Sweden.

**Principal investigator:** Sören Holmberg, phone +46 31 786 12 27, e-mail: [soren.holmberg@pol.gu.se](mailto:soren.holmberg@pol.gu.se). Data processed by Rudolf Antoni and Jonas Ohlsson, the SOM Institute.



**The SOM Institute**  
**University of Gothenburg**  
**Box 710**  
**SE-405 30 Göteborg**  
**Sweden**

**[www.som.gu.se](http://www.som.gu.se)**

soren.holmberg@pol.gu.se  
jonas.ohlsson@jmg.gu.se